



4 Charles Clowes Walk, London
SW11

GARTON JONES.COM

4 Charles Clowes Walk, London
, SW11

GARTON JONES.COM

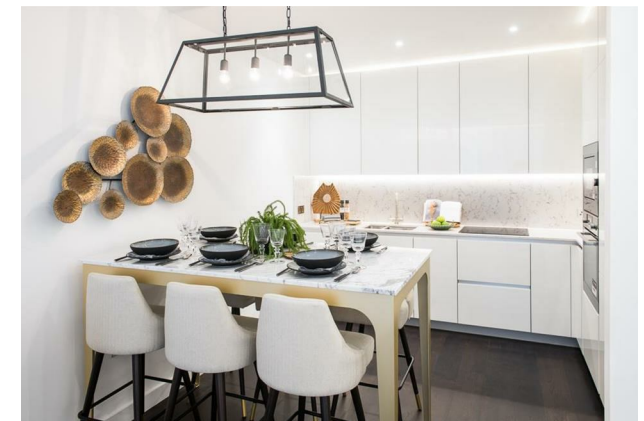
9 Albert
Embankment
London
SE1 7SP

Sales +44 (0) 20 7735 1888
nineelms@gartonjones.com
www.gartonjones.com

£960 Per Week

A brand new, spacious 2 double bedroom apartment of approx. 770sq.ft (71.56sq.m), part of The Residence Collection in Nine Elms. This elegant apartment is on the 1st floor of this new development which for the residents' private use features a 24 hour concierge, gym, media room, board room and dedicated building manager. Ideally located within close walking distance to the extensive transport links at Vauxhall Station, amenities such as the Black Cab Coffee Co as well as a Waitrose convenience store a located nearby and you are also close to a host of other local shops and restaurants.

- 2 Bedrooms
- 770sq.ft (71.56sq.m)
- 2 Bathrooms (1 En-suite)
- Smart Integrated Kitchen
- Open Plan Reception Room
- Balcony
- Underfloor Heating
- Residents Gym
- 24 Hour Concierge
- 0.3 Miles from Nine Elms Tube Station



EPC certificate available on request.



FIRST FLOOR

APPROX. GROSS INTERNAL AREA *
Apartment - 770 Ft² - 71.56 M²
Balcony - 54 Ft² - 5.02 M²

Property Details:

APARTMENT 5
THORNES HOUSE
4 CHARLES CLOWES WALK
LONDON
SW11 7AG

Plans Drawn: 29.01.2019

Surveyed and Drawn By:

BKR
Hobbesway Work Space
1 Empire Mews
London
SW19 2BF

Tel: 0145 257 2023
info@bkrfloorplans.co.uk
www.bkrfloorplans.co.uk
© BKR 2019

