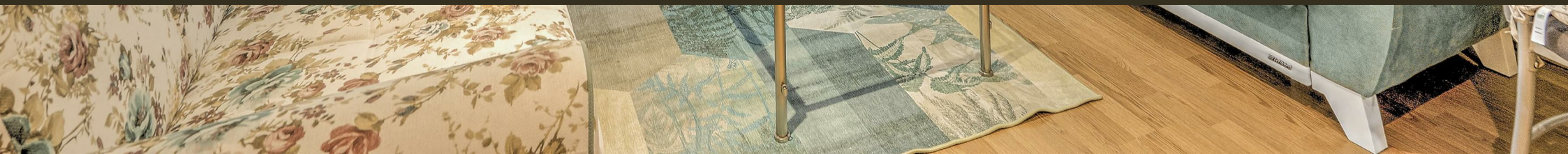




9 Albert Embankment, London  
SE1

GARTON JONES.COM



# 9 Albert Embankment, London , SE1

GARTON JONES.COM

9 Albert  
Embankment  
London  
SE1 7SP

Sales +44 (0) 20 7735 1888  
nineelms@gartonjones.com  
www.gartonjones.com

## £525,000 Leasehold

A fantastic 1-bedroom apartment of 544sq.ft (50.58sq.m) available to buy in 9 Albert Embankment, SE1, a popular riverside residential development by Berkeley Homes. This charming property boasts a cosy open plan reception room and an integrated kitchen, a well-proportioned bedroom with built-in storage, access to a balcony from both the bedroom & reception, a modern bathroom suite and additional storage room. Please note the sale also includes a secure underground parking space.

Residents of 9 Albert Embankment have the added benefit of a 24-hour concierge and an on-site convenience store, and situated in a prime location, this property provides easy access to all the amenities and attractions that London has to offer. Transport links are very good with Vauxhall, Waterloo and Westminster Rail and Tube services all within a reasonable walking distance.

Please note furniture may differ to that shown in the current photos.

- Leasehold: 976 Years Remaining
- Service Charges: £3,900 per annum
- Ground Rent: £150 per annum

- 1 Bedroom
- 544sq.ft (50.58sq.m)
- Bathroom
- Open Plan Reception
- Modern Integrated Kitchen
- Balcony
- Views over Communal Courtyard
- 24 Hour Concierge
- Parking Available via Separate Agreement
- 0.5 Miles to Vauxhall Station



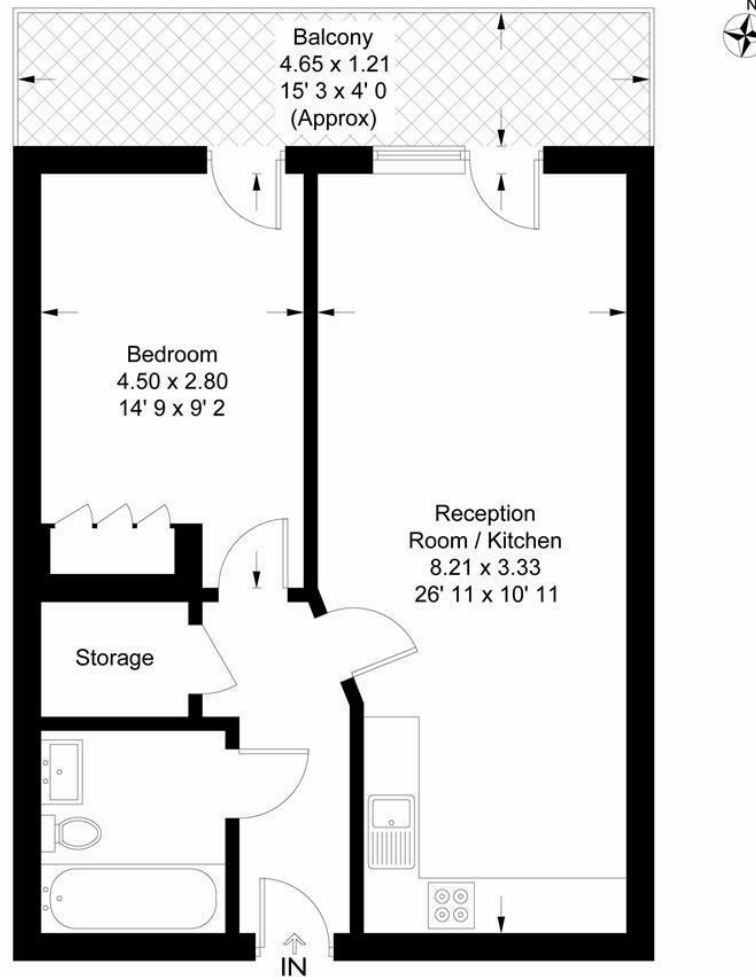
EPC certificate available on request.



**Albert Embankment**

Approximate Gross Internal Area = 568 sq ft / 52.8 sq m  
Balcony = 60 sq ft / 5.6 sq m

GARTON JONES  
LONDON



This plan is not to scale and must be used as layout guidance only. All measurements and areas are approximate and should not be relied upon to provide accurate information. This plan must not be relied upon when making property valuations, design considerations or any other such relevant decisions. We accept no responsibility or liability (whether in contract, tort or otherwise) in relation to any loss whatsoever arising from or in connection with any use of this plan or the adequacy, accuracy or completeness of it or any information within it.



