



1 Riverlight Quay, London
SW11

GARTONJONES.COM



1 Riverlight Quay, London , SW11

£875 Per Week

A spacious 2 double bedroom apartment with secure underground parking (via separate agreement) to rent of 791sq.ft (73.45sq.m.) in Riverlight Quay, a popular residential development located on the banks of the River Thames in the heart of Nine Elms. This furnished property is in a great location with fantastic views of the River Thames and has an open plan reception room with a smart integrated kitchen, wood flooring with underfloor heating, comfort cooling, 2 luxury bathrooms (1 en-suite), and 2 balconies.

Residents of Riverlight Quay benefit from exclusive facilities to include a fantastic Heated Swimming Pool, Jacuzzi, Sauna and Steam Room as well as a well-equipped mezzanine "river view" Gymnasium. There is also a reception lounge and library, 24-hour concierge and a private cinema screening room and virtual golf room. The on-site amenities include the Black Cab Coffee Co, Nine Elms Tavern and Waitrose supermarket and there are plenty of nearby new restaurants and bars adding to the increasing vibrancy of Nine Elms. Nine Elms Tube Station and Battersea Power Station Northern Line tube stops are now open and both a short walk away from Riverlight Quay.

Please note furniture may differ to that shown in the current photos.

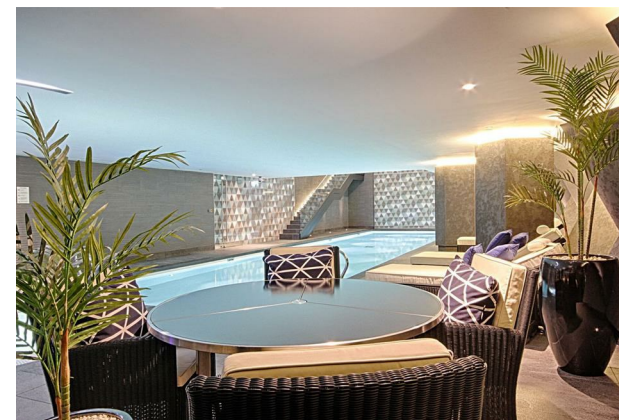
- Electricity Supply — Mains | Water Supply — Mains | Sewerage — Mains | Heating — Comfort Cooling
- Broadband & Mobile Signal : Check Coverage via Ofcom
- Parking via Separate Agreement
- Lift Access
- Building Safety: EWS1 Available on Request
- Council Tax Band F (London Borough of Wandsworth)
- 5 Week Security Deposit
- Holding deposit equivalent to 1 week of rent
- Rent to be payable monthly in advance
- EPC Rating B (83)

GARTON JONES.COM

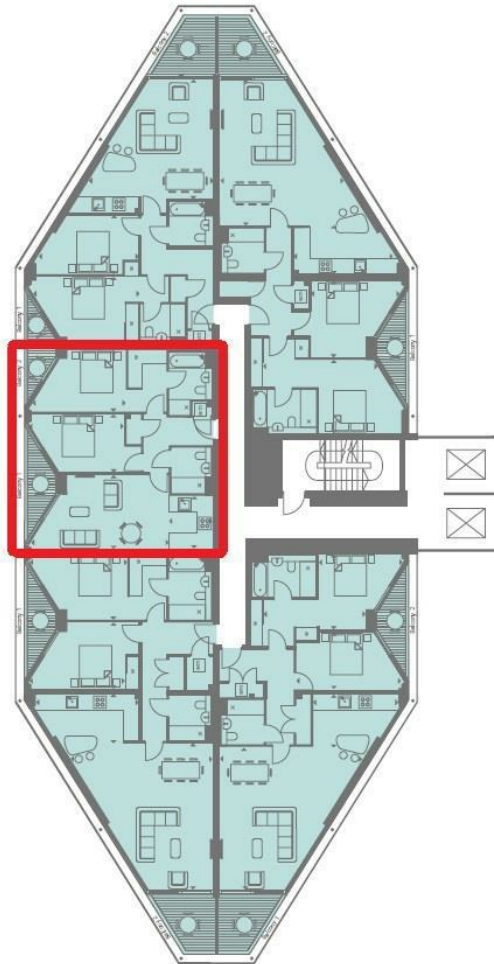
9 Albert
Embankment
London
SE1 7SP

Lettings:
+44 (0) 20 7735 1888
nineelms@gartonjones.com
www.gartonjones.com

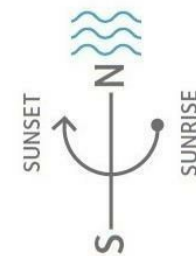
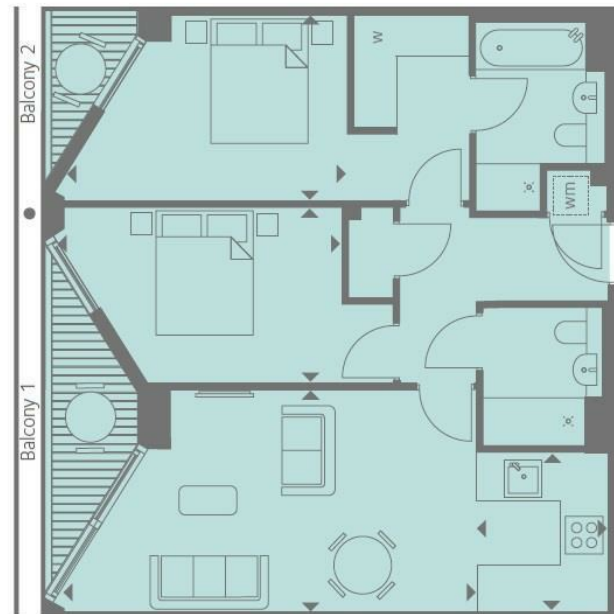
- 2 Bedrooms
- 791sq.ft (73.45sq.m)
- Views of the River Thames
- 2 Bathrooms (1 En-Suite)
- Open Plan Reception
- 2 Balconies
- Secure Parking (via Separate Agreement)
- Residents Gym
- Swimming Pool & Spa Facilities
- 24 Hour Concierge



Thames River



LEVEL 11



TYPE 5	62
INTERNAL AREA M ² / SQ FT	73.30 / 789
EXTERNAL AREA M ² / SQ FT	7.26 / 78
Living / Dining	6.44m x 3.48m / 21'1" x 11'4"
Kitchen	2.50m x 2.07m / 8'2" x 6'7"
Bedroom 1	4.45m x 2.90m / 14'5" x 9'5"
Bedroom 2	4.33m x 2.75m / 14'2" x 9'0"
Balcony 1	5.46m x 1.50m / 17'9" x 4'9"
Balcony 2	2.73m x 1.50m / 8'9" x 4'9"

