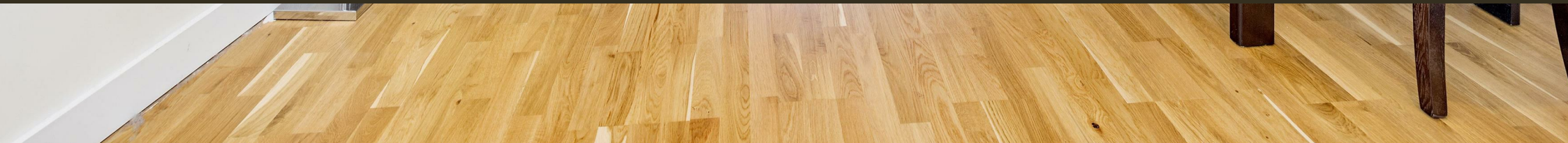




16 Maltby Street, London  
SE1

GARTONJONES.COM



16 Maltby Street, London  
, SE1

GARTON JONES.COM

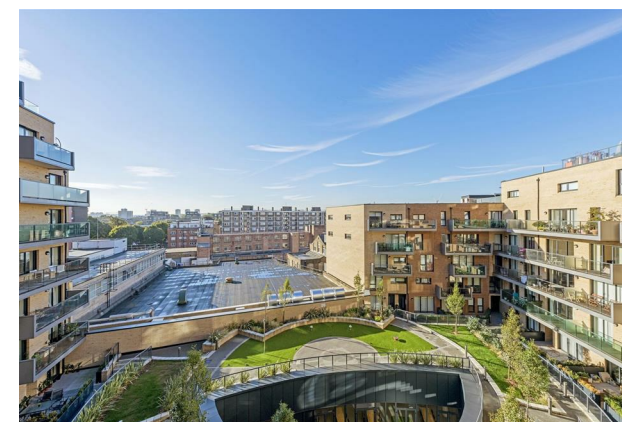
9 Albert  
Embankment  
London  
SE1 7SP

Lettings:  
+44 (0) 20 7735 1888  
nineelms@gartonjones.com  
www.gartonjones.com

£525 Per Week

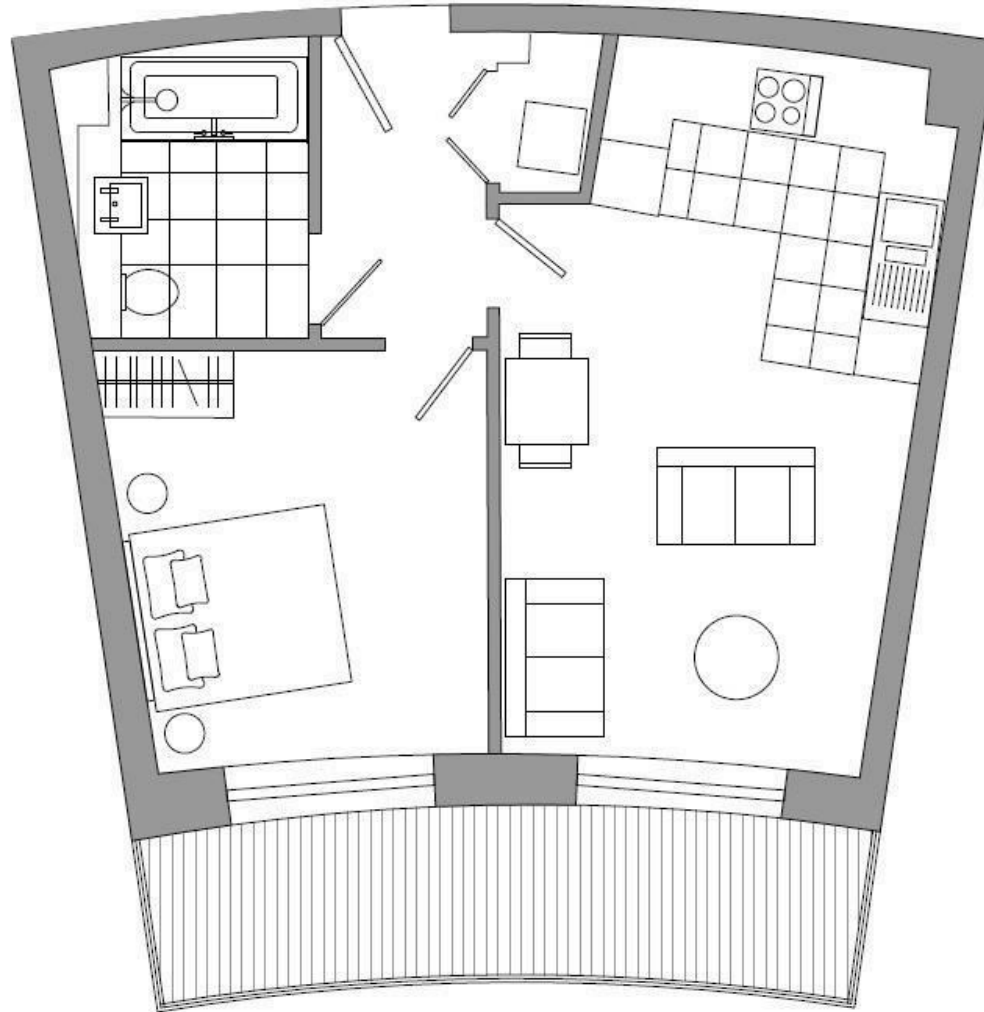
A 1-bedroom apartment on the 5th floor of approx. 524sq.ft (48.7sq.m) available to rent within Arc House, a popular residential development located only moments from Tower Bridge. This property has a fantastic South facing aspect overlooking the striking landscaped communal gardens and further benefits from an open plan reception room with a smart integrated kitchen with SMEG appliances. There is a fitted wardrobe to the bedroom, DAB, broadband and Sky+ HD enabled sockets, a bathroom suite and a full-width private balcony. The Arc is very well located in the heart of the fashionable and buzzing London Bridge Quarter.

- 1 Bedroom
- 524sq.ft (48.6sq.m)
- Open Plan Reception
- Modern Integrated Kitchen
- Bathroom
- Spacious Balcony
- South Facing
- Porter
- Next to Maltby Street Market
- 0.6 Miles to London Bridge & Bermondsey Stations



Arc House is just a stone's throw away from the bustling Bermondsey Street, where you can indulge in the best of London's food and drink scene and is only a short stroll to the historic riverside walkways around Tower Bridge. London Bridge and Bermondsey Stations are both within easy reach, providing access across London and beyond.

Please note furniture may differ to that shown in the current photos.



## C504

Total area: 48.7 SQM 524 SQFT

Living / Dining  
inc Kitchen 3.7 x 6.0m 11'9" x 19'7"

Bedroom 3.3 x 3.6m 10'9" x 11'5"

Pease note that balcony  
arrangement varies with this  
apartment style.



