



Elm Quay Court, Nine Elms
London SW8

GARTON JONES.COM



Elm Quay Court, Nine Elms London, SW8

GARTON JONES.COM

9 Albert
Embankment
London
SE1 7SP

Sales +44 (0) 20 7735 1888
nineelms@gartonjones.com
www.gartonjones.com

£600 Per Week

A river facing 2-bedroom, 2 Bathroom (1 en-suite) apartment in this popular riverside development. The property is offered furnished and comprises a large private terrace overlooking the River Thames, separate kitchen, wood flooring throughout, concierge, secure underground parking and further benefits from fantastic leisure facilities including luxury indoor swimming pool, Jacuzzi and gymnasium. Elm Quay Court is ideally situated within a few minutes' walk of Vauxhall Underground (Victoria Line) and Overground.

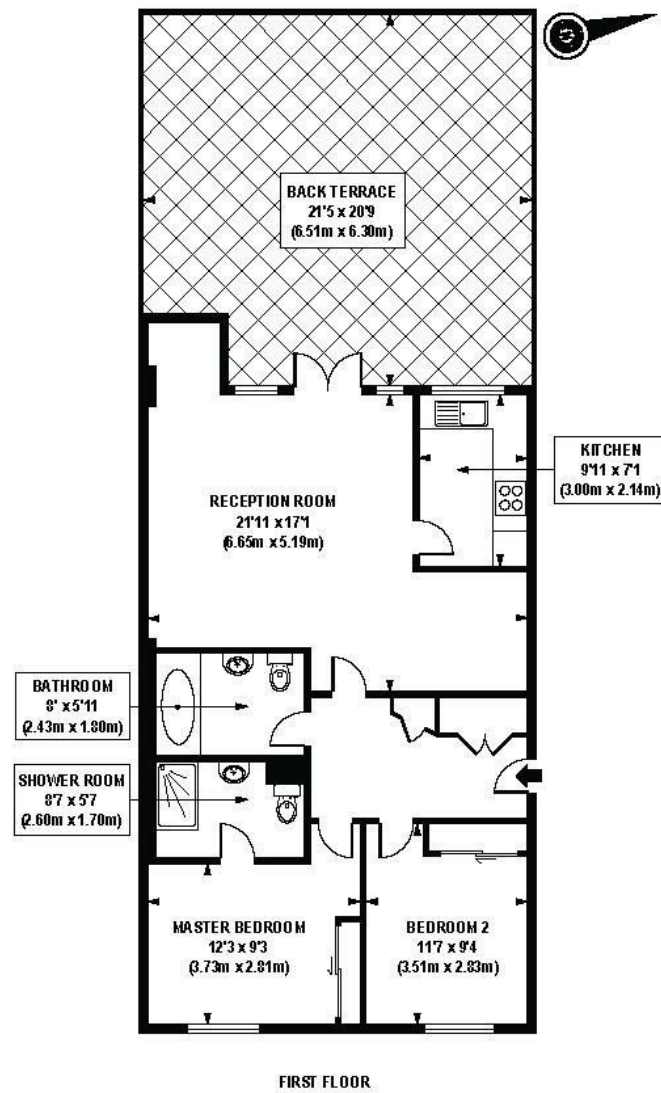
Please note furniture may differ to that shown in the current photos.

- Electricity Supply — Mains | Water Supply — Mains | Sewerage — Mains | Heating — Central Heating
- Broadband & Mobile Signal : Check Coverage via Ofcom
- Parking: 1 Parking Space Included
- Lift Access
- Building Safety: EWS1 Available on Request
- Council Tax Band G (London Borough of Wandsworth)
- 5 Week Security Deposit
- Holding deposit equivalent to 1 week of rent
- Rent to be payable monthly in advance
- EPC Rating B (83)

- 2 Bedrooms
- 799sq.ft (74.26sq.m)
- 2 Bathrooms (1 En-Suite)
- Direct River Views
- Large Private Terrace (450sq.ft)
- Porter
- Secure Parking
- Residents Swimming Pool
- Gym
- 0.5 Miles to Vauxhall Station



EPC certificate available on request.



APPROX. GROSS INTERNAL FLOOR AREA 799 sq. ft / 74.26 sq. m

