



9 Albert Embankment, London  
SE1

GARTON JONES.COM



## 9 Albert Embankment, London , SE1

GARTON JONES.COM

9 Albert  
Embankment  
London  
SE1 7SP

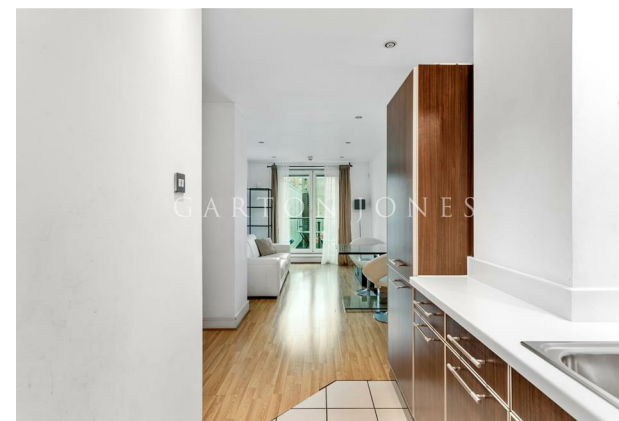
Lettings:  
+44 (0) 20 7735 1888  
nineelms@gartonjones.com  
www.gartonjones.com

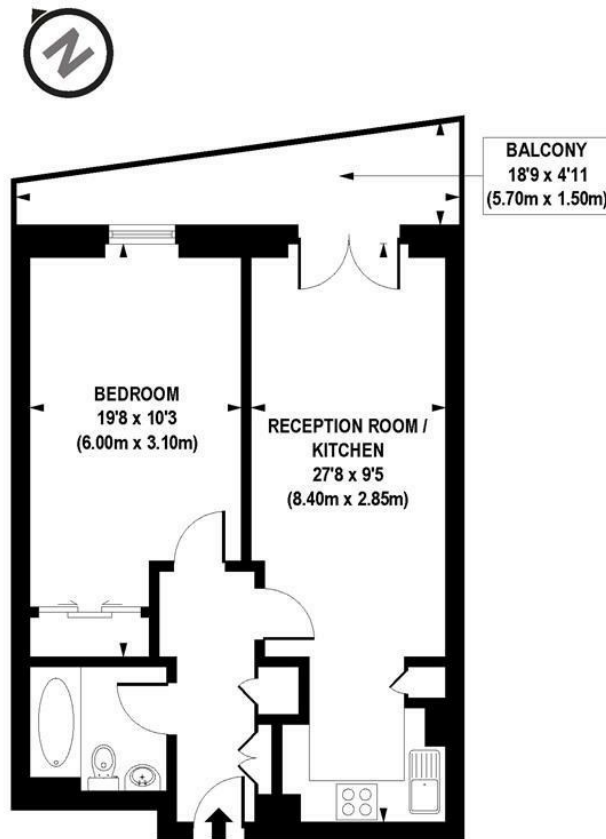
### £525 Per Week

A 1-bedroom apartment of 541sq.ft (50.27sq.m) available to rent in 9 Albert Embankment, a highly sought after, modern development on the banks of the River Thames. This well-presented property benefits from an open plan reception room with fitted kitchen, a balcony with access from both the reception and bedroom and wood flooring throughout. 9 Albert Embankment has a 24-hour concierge and on-site convenience store and is located just to the Southside of Lambeth Bridge within walking distance to Parliament Square, London's trendy South Bank and the West End. Transport links are excellent with frequent bus service on the doorstep and the rail/tube links of both Vauxhall and Waterloo within easy reach.

Please note furniture may differ to that shown in the current photos.

- 1 Bedroom
- 541sq.ft (50.27sq.m)
- Open Plan Reception
- Modern Kitchen
- Bathroom
- Balcony
- 24 Hour Concierge
- Lift Access
- On-Site Convenience Store
- 0.5 Miles to Vauxhall Station





APPROX. GROSS INTERNAL FLOOR AREA 541 sq. ft / 50.27 sq. m

Floorplan is for illustrative purposes only and is not to scale.  
Every attempt has been made to ensure the accuracy of the floorplan shown, however all measurements, fixtures, fittings and data shown are an approximate interpretation for illustrative purposes only.  
Liability for errors, omissions or mis-statement through negligence or otherwise is hereby excluded.

**CP CREATIVE**  
PROPERTY MARKETING



