



5 New Union Square, London  
SW11

GARTONJONES.COM



# 5 New Union Square, London , SW11

GARTON JONES.COM

9 Albert  
Embankment  
London  
SE1 7SP

Sales +44 (0) 20 7735 1888  
nineelms@gartonjones.com  
www.gartonjones.com

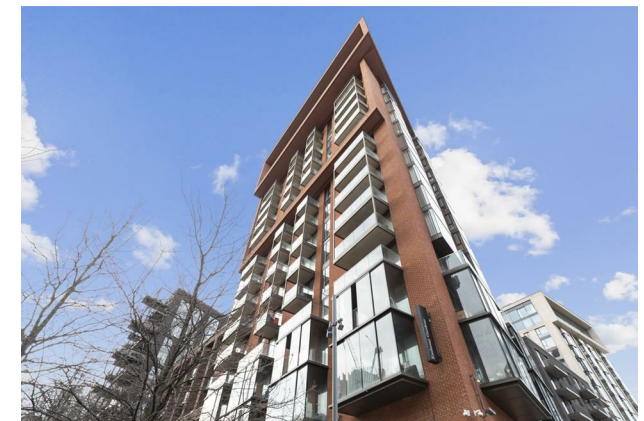
## £750 Per Week

A spacious River facing 1-bedroom apartment of approx. 614sq.ft (57sqm) in Ambassador Building, Embassy Gardens in the heart of Nine Elms. This apartment has an open plan reception room with a large balcony offering great views towards the River Thames. There is a smart integrated kitchen, good storage, and a luxury bathroom suite. Interiors boast high ceilings, walnut parquet flooring, marble counter tops in the kitchens and thermostatically controlled comfort cooling and heating. For the residents' private use there is a 24-hour concierge, cinema screening room, library & lounge, business centre, yoga studio, 2 private gymnasiums, and a heated indoor/outdoor swimming pool.

Amenities such as District coffee shop, Darby's restaurant, The Alchemist cocktail bar, as well as a Waitrose convenience store are located on-site but you are also close to a host of other local shops and restaurants on your doorstep. Nine Elms tube station, part of the Northern Line extension, is less than a 5 minutes' walk from Embassy Gardens providing easy access into Central London and the transport links of Vauxhall Station are also within walking distance. Embassy Gardens is also a short walk away from Battersea Power Station, offering fantastic shops, restaurants & bars all on your doorstep.

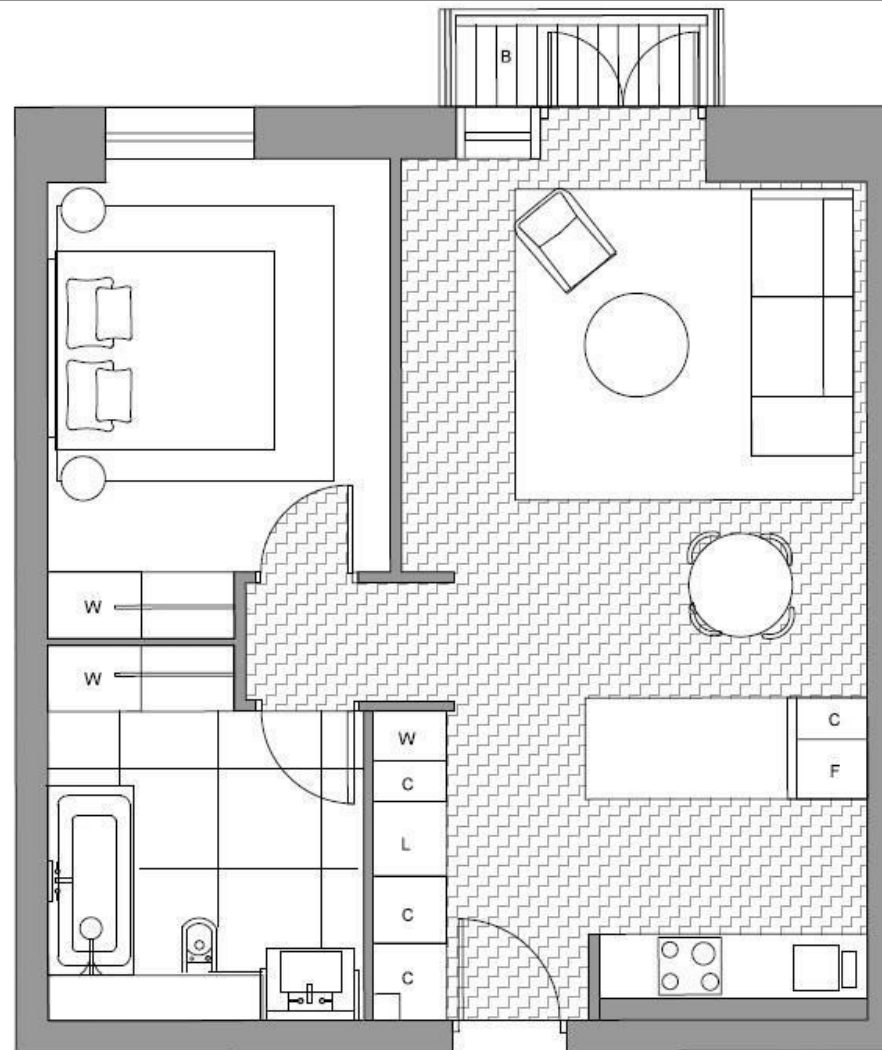
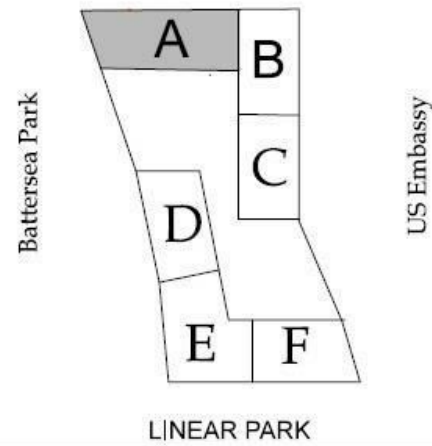
Please note furniture may differ to that shown in the current photos.

- 1 Bedroom
- 614 Sq.ft (57 Sq.m)
- Direct River Views
- Open Plan Reception Room
- Balcony
- 24 Hour Concierge
- Sky Pool
- 2 Residents Gyms
- Cinema Screening Room
- 0.4 Miles to Battersea Power Station Tube



EPC certificate available on request.

# Central London Thames River



1 Bedroom

**Total area:**  
57 sqm / 614 sqft

**Living area:**  
8050 x 4180 mm

**Bedroom:**  
4333 x 3070 mm

**Winter Garden:**  
1.7 sqm



