



9 Albert Embankment, London
SE1

GARTONJONES.COM

9 Albert Embankment, London , SE1

GARTON JONES.COM

9 Albert
Embankment
London
SE1 7SP

Lettings:
+44 (0) 20 7735 1888
nineelms@gartonjones.com
www.gartonjones.com

£765 Per Week

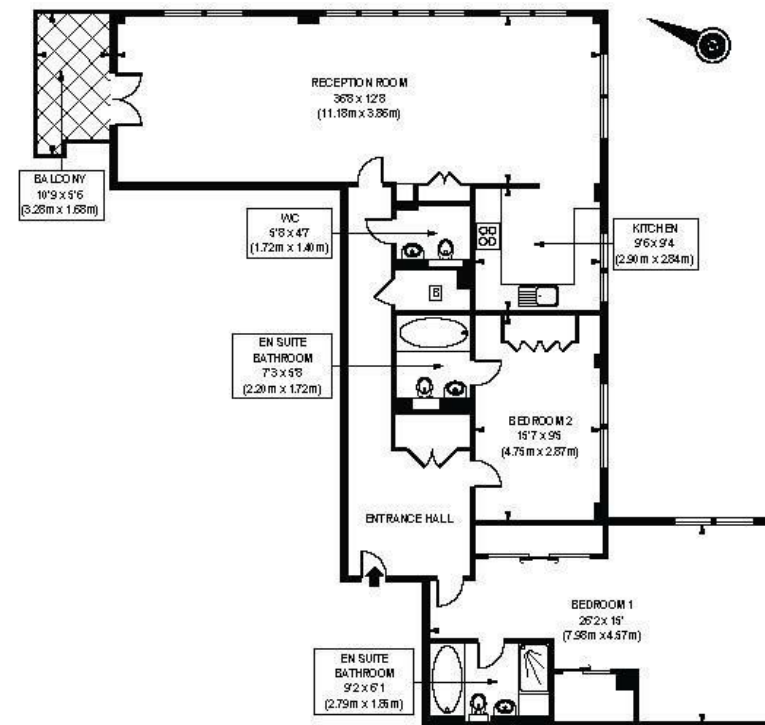
A bright and spacious 2 double bedroom apartment of approx. 1377sq.ft (128.08sq.m) available in 9 Albert Embankment, a popular riverside development on the banks of the River Thames. The property benefits from a fantastic triple aspect open plan reception room with a modern fitted kitchen, access to a balcony with direct views of the River Thames, 2 en-suite bathrooms and a guest w/c, & good storage throughout.

9 Albert Embankment is a secure development with a 24-hour concierge and on-site convenience store located just moments from London's trendy South Bank and a great selection of shops, bars, and restaurants. Transport links are excellent with Vauxhall Rail, Tube and Bus services within a few minutes' walk. There is also a taxi rank at the neighbouring River Park Plaza Hotel and a River Taxi Pier at St George Wharf, also within easy reach.

Please note furniture may differ to that shown in the current photos.

- 2 Bedrooms
- 1377sq.ft (128.08sq.m)
- 2 En-Suite Bathrooms & Guest W/C
- Triple Aspect Open Plan Reception
- Direct River Views
- Modern Integrated Kitchen
- Balcony
- 24 Hour Concierge
- On-site Convenience Store
- 0.5 Miles to Vauxhall Station





SECOND FLOOR

APPROX GROSS INTERNAL FLOOR AREA 1377 sq. ft / 126.08 sq. m

