



81 Black Prince Road, London
SE1

GARTONJONES.COM



81 Black Prince Road, London
, SE1

GARTON JONES.COM

9 Albert
Embankment
London
SE1 7SP

Lettings:
+44 (0) 20 7735 1888
nineelms@gartonjones.com
www.gartonjones.com

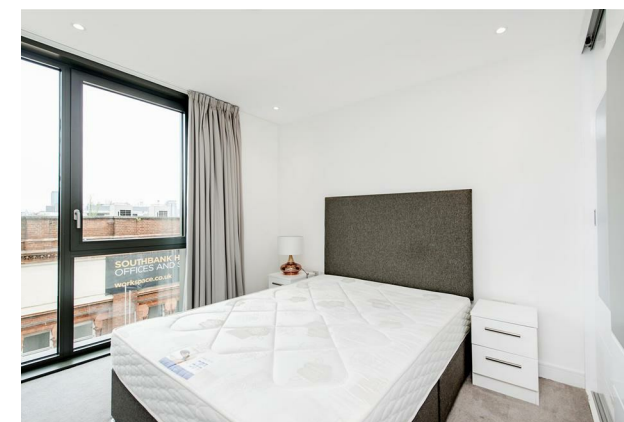
£580 Per Week

An exceptional 2-bedroom apartment offering 631sq.ft (58.7sq.m) available to rent in the sought-after Parliament House, 81 Black Prince Road. This bright residence boasts dual-aspect windows framing views towards the River Thames and features an open-plan reception room and a modern integrated kitchen that lead out to a private balcony, floor-to-ceiling windows and has two well-proportioned bedrooms, including a generously sized master bedroom with built-in wardrobes and a luxurious en-suite bathroom as well as an additional single bedroom served by a second bathroom.

Parliament House provides an array of amenities including a dedicated concierge service offering assistance and security, cycle storage, as well as a resident's gymnasium. Beyond the development, residents enjoy a prime location close to the River Thames and a short stroll from the renowned Damien Hirst's Newport Street Gallery. The vibrant South Bank offers a wealth of cultural attractions, restaurants, and shops, all within easy reach. Excellent transport links, including a regular bus service on the doorstep and nearby Vauxhall and Westminster stations, provide seamless connections across the city

Please note furniture may differ to that shown in the current photos. Parliament House does not currently hold a satisfactory EWS1 rating and remedial works are required, however, there are interim safety measures in place

- 2 Bedrooms
- 631sq.ft (58.7sq.m)
- 2 Bathrooms (1 En-Suite)
- Dual Aspect Reception
- Modern Integrated Kitchen
- Underfloor Heating
- Daytime Concierge
- Resident's Gym
- Cycle Storage
- 0.6 Miles to Vauxhall Station





Total Area 58.7 sq m 631 sq ft

