



14 St George Wharf, London  
SW8

GARTONJONES.COM



# 14 St George Wharf, London , SW8

GARTON JONES.COM

9 Albert  
Embankment  
London  
SE1 7SP

Sales +44 (0) 20 7735 1888  
nineelms@gartonjones.com  
www.gartonjones.com

## £800 Per Week

A very generously proportioned unfurnished 2-bedroom apartment offering 1,100sq.ft (102sq.m) available to rent in Drake House, part of St George Wharf, a modern riverside development built by Berkeley Homes. This property has been completed to a high standard and benefits from en-suite bathrooms to both bedrooms, an additional guest W/C, excellent storage throughout, a large reception room with dining area, a modern integrated kitchen, wood flooring and access to a balcony offering fantastic views of the River Thames towards the Houses of Parliament and beyond. St George Wharf is moments from the rail, tube and bus services of Vauxhall and has many on-site amenities including a Tesco, 24-hour The Gym Group gymnasium, Pret-A-Manger, a plethora of bars & restaurants, and access to the river taxi service.

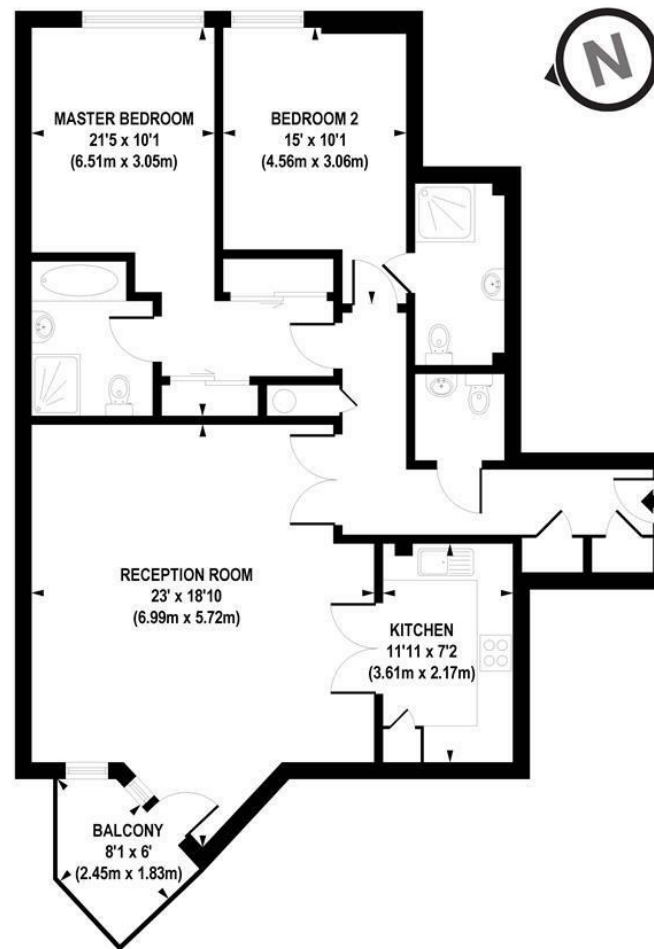
Please note the property may differ to that shown in the current photos and viewing is highly recommended.

Rent to be payable monthly in advance

EPC certificate available on request.

- 2 Bedrooms
- 1057 sq.ft /(98.21sq. m)
- 2 En-Suite Bathrooms & Guest W/C
- Views of the River Thames
- Balcony
- Spacious Reception
- Modern Kitchen
- 24 Hour Concierge
- Onsite Amenities including Pret-a-Manger, Tesco's & The Gym Group
- 0.1 Miles to Vauxhall Station





APPROX. GROSS INTERNAL FLOOR AREA 1057 sq. ft / 98.21 sq. m

Floorplan is for illustrative purposes only and is not to scale.  
Every attempt has been made to ensure the accuracy of the floorplan shown, however all measurements,  
fixtures, fittings and data shown are an approximate interpretation for illustrative purposes only.  
Liability for errors, omissions or mis-statement through negligence or otherwise is hereby excluded.

**CP CREATIVE**  
PROPERTY MARKETING

