



8 New Union Square, London
SW11

GARTONJONES.COM

8 New Union Square, London
, SW11

GARTON JONES.COM

9 Albert
Embankment
London
SE1 7SP

Lettings:
+44 (0) 20 7735 1888
nineelms@gartonjones.com
www.gartonjones.com

£2,750 Per Week

A stunning, double height ceiling 3 bedroom 2,182sqft Penthouse in Capital Building at Embassy Gardens. Completed to a very high standard, this apartment is in a fantastic position, enjoying amazing views and comprising a large open plan reception room with stairs leading to 600sqft roof garden to soak in the incredible views across London and beyond.

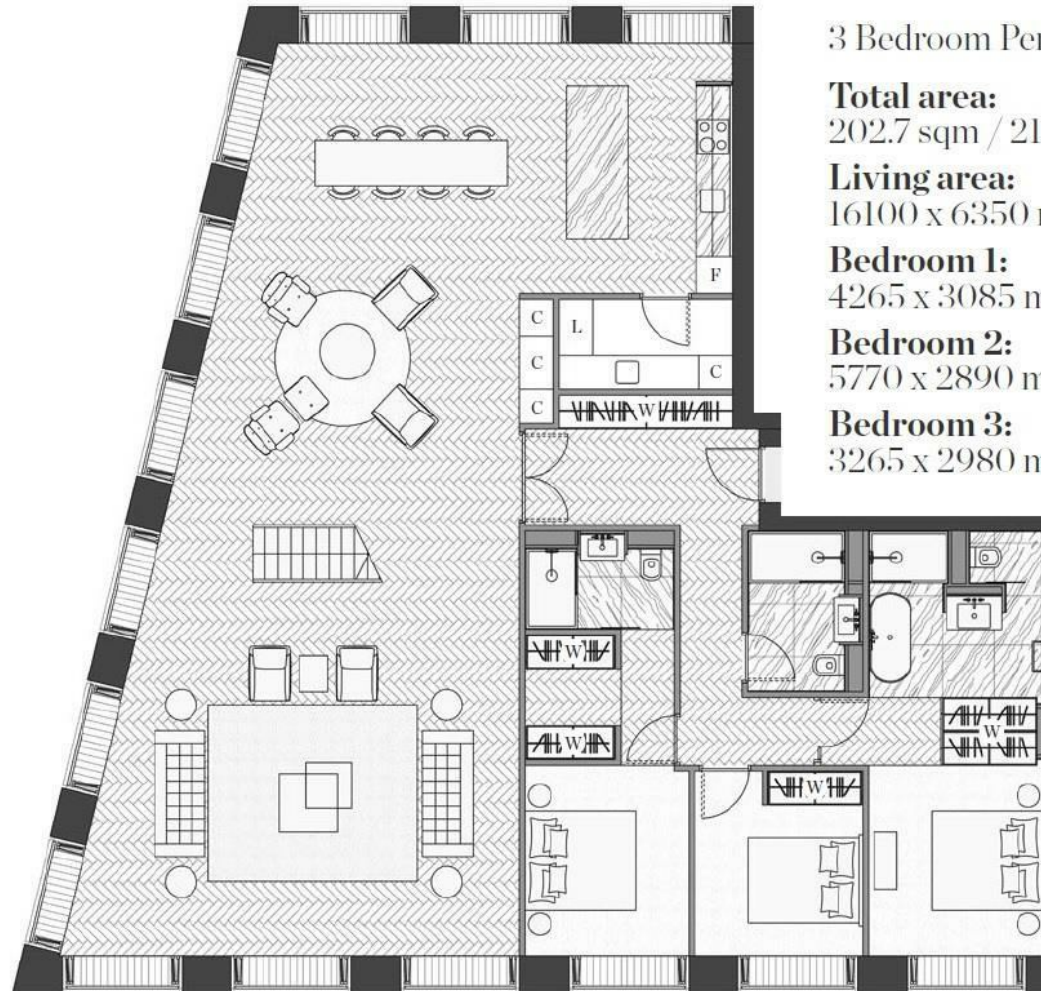
There is a smart integrated kitchen, good storage throughout luxury bathroom suites. Interiors boast higher than average ceilings, walnut parquet flooring, marble counter tops in the kitchens and thermostatically controlled comfort cooling and heating, Embassy Gardens is the pinnacle of luxury London living. For the residents' private use there is a 24-hour concierge, cinema screening room, library & lounge, business centre, yoga studio, 2 private gymnasiums, and a very cool indoor/outdoor swimming pool.

Residents of Embassy Gardens also have access to the world-famous sky pool, connecting two of the towers at Legacy Building. Amenities such as District coffee shop, Darby's restaurant, The Alchemist cocktail bar, as well as a Waitrose convenience store are located on-site but you are also close to a host of other local shops and restaurants on your doorstep. Nine Elms tube station, part of the Northern Line extension, is less than a 5 minutes' walk from Embassy Gardens providing easy access into Central London and the transport links of Vauxhall Station are also within walking distance

Please note furniture may differ to that shown in the current photos.

- 3 Bedrooms
- 2,182sq.ft (202sq.m)
- Penthouse
- Triple Aspect Reception
- Roof Terrace
- Stunning Views
- Secure Parking
- Sky Pool
- Residents Gym
- 24 Hour Concierge





3 Bedroom Penthouse

Total area:
202.7 sqm / 2182 sqft

Living area:
16100 x 6350 mm

Bedroom 1:
4265 x 3085 mm

Bedroom 2:
5770 x 2890 mm

Bedroom 3:
3265 x 2980 mm

