



Embassy Gardens, London  
SW11

GARTONJONES.COM



# Embassy Gardens, London , SW11

GARTON JONES.COM

9 Albert  
Embankment  
London  
SE1 7SP

Sales +44 (0) 20 7735 1888  
nineelms@gartonjones.com  
www.gartonjones.com

## £699,950 Leasehold

A spacious 1-bedroom apartment of 625sq.ft (58.1sqm) available to buy in Ambassador Building in Embassy Gardens, a very popular residential development in the heart of Nine Elms. This fantastic apartment has an open plan reception room with a large balcony offering South-Eastern views. There is a well-proportioned open plan reception room & smart integrated kitchen, good storage throughout and a luxury bathroom suite. For the residents' private use there is a 24-hour concierge, cinema screening room, library & lounge, business centre, yoga studio, 2 private gymnasiums, and a very cool indoor/outdoor swimming pool. Residents of Embassy Gardens also have access to the world-famous sky pool, connecting two of the towers at Legacy Building. Amenities such as District coffee shop, Darbys' restaurant, The Alchemist cocktail bar, as well as a Waitrose convenience store are located on-site but you are also close to a host of other local shops and restaurants on your doorstep. Nine Elms tube station, part of the Northern Line extension, is less than a 5 minutes' walk from Embassy Gardens providing easy access into Central London and the transport links of Vauxhall Station are also within walking distance.

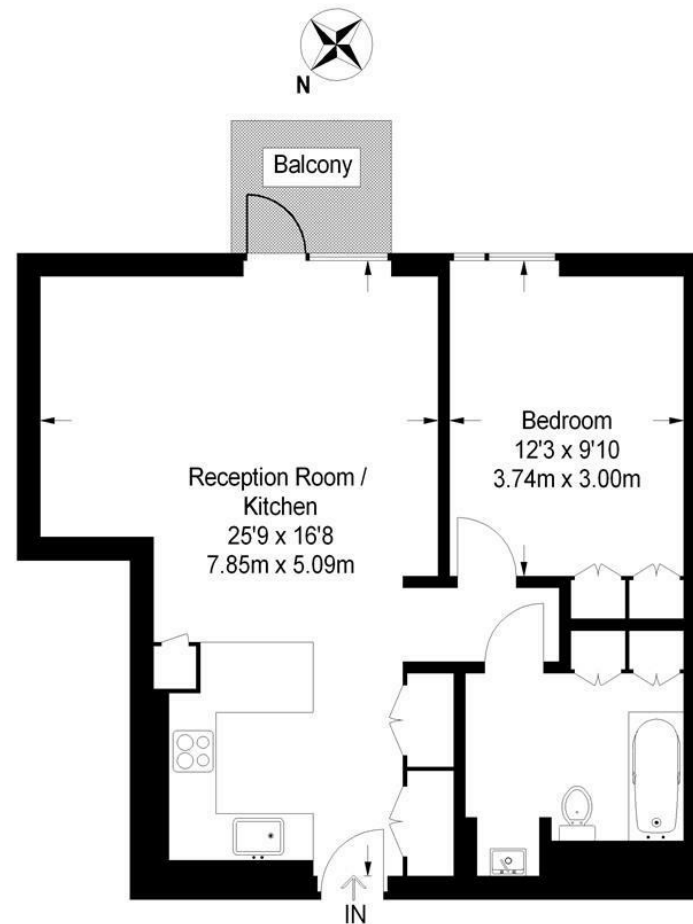
- 1 Bedroom
- 625sq.ft (58.1sqm)
- Bathroom
- Open Plan Reception Room
- Balcony
- Sky Pool
- 2 Residents Gyms
- 24 Hour Concierge
- Cinema Screening Room, Residents Lounges & Library
- 0.4 Miles to Battersea Power Station Tube



EPC certificate available on request.

## Ambassador Building

Approximate Gross Internal Area  
625 sq ft / 58.1 sq m



Not to scale, for guidance only and must not be relied upon as a statement of fact.  
All measurements and areas are approximate only and have been prepared in  
accordance with the current edition of the RICS Code of Measuring Practice.



