



1 Salamanca Place, London  
SE1

GARTONJONES.COM

# 1 Salamanca Place, London , SE1

## £425,000 Leasehold

Welcome to this charming 1-bedroom property located in 1 Salamanca Place, set back from Albert Embankment and the River Thames. This delightful flat boasts a modern design, perfect for those seeking a contemporary living space in a vibrant area. Upon entering, you are greeted by a cosy open plan reception room, ideal for relaxing or entertaining guests. The property features one well-appointed bedroom, offering a peaceful retreat after a long day in the bustling city. The bathroom provides a sleek space to unwind and rejuvenate.

With a total of 558 sq. ft / 51.83 sq. m, this flat has been cared for by the current owner and offers a comfortable living environment with a layout that maximises space and functionality. Built in 2002, this property combines modern amenities with a convenient location, making it a desirable choice for those looking to experience the best of London living. The flat is within easy walking distance to Vauxhall Pleasure Gardens, the "Little Portugal" area of South Lambeth on one side, and the river Thames, Southbank and Westminster on the other side.

Please note furniture may differ to that shown in the current photos.

EPC certificate available on request.

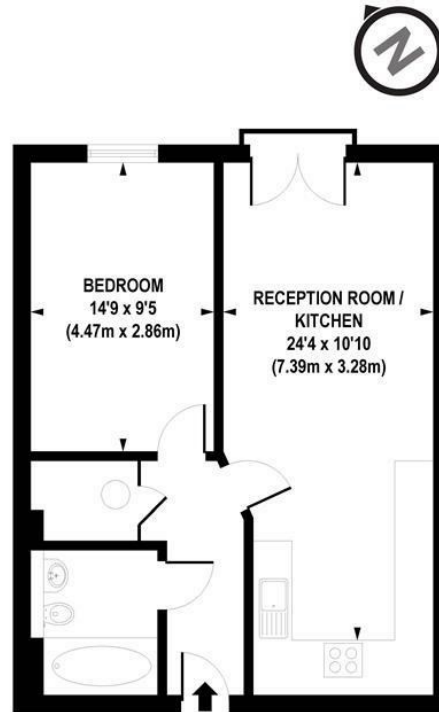
- 1 Bedroom
- 558 sq. ft / 51.83 sq. m
- 1 Bathroom
- Open Plan Reception
- Modern Integrated Kitchen
- Good Storage
- Lift Access
- Close to London Southbank
- On-site Convenience Store
- 0.6 Miles to Vauxhall Station, 0.8 Miles to Lambeth North & 0.9 Miles to Westminster Station

## GARTON JONES.COM

9 Albert  
Embankment  
London  
SE1 7SP

Sales +44 (0) 20 7735 1888  
nineelms@gartonjones.com  
www.gartonjones.com





**APPROX. GROSS INTERNAL FLOOR AREA 558 sq. ft / 51.83 sq. m**

Floorplan is for illustrative purposes only and is not to scale.  
Every attempt has been made to ensure the accuracy of the floorplan shown, however all measurements,  
fixtures, fittings and data shown are an approximate interpretation for illustrative purposes only.  
Liability for errors, omissions or mis-statement through negligence or otherwise is hereby excluded.

**CP CREATIVE**  
PROPERTY MARKETING



