



28 Surrey Quays Road, Southwark
London SE16

GARTON JONES.COM



28 Surrey Quays Road, Southwark
London, SE16

GARTON JONES.COM

9 Albert
Embankment
London
SE1 7SP

Sales +44 (0) 20 7735 1888
nineelms@gartonjones.com
www.gartonjones.com

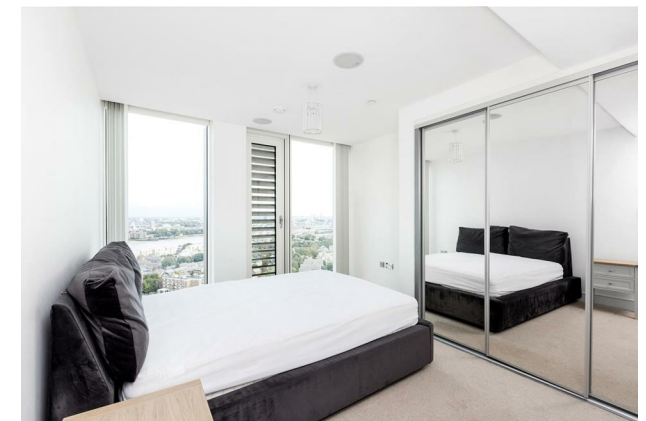
£675 Per Week

A desirable 2-bedroom apartment offering 850sq.ft (79sq.m) available to rent in Ontario Point, forming part of the Maple Quay development located right next to Canada Water tube station. Located on one of the upper floors of the building, this spacious apartment features a generous open-plan reception area with a modern integrated kitchen, 2 deluxe bathrooms (1 with en-suite), and a balcony with views towards the River Thames & Tower Bridge. Residents can enjoy a range of facilities, including a gymnasium, a communal roof terrace on the 25th floor, and a 24-hour concierge service. Ontario Point is conveniently situated for local shopping and Canada Water's transport links.

Please note furniture may differ to that shown in the current photos.

- Electricity Supply — Mains | Water Supply — Mains | Sewerage — Mains | Heating — Comfort Cooling
- Broadband & Mobile Signal : Check Coverage via Ofcom
- Parking: No Parking Included
- Lift Access
- Building Safety: EWS1 Available on Request
- Council Tax Band E (London Borough of Southwark)
- 5 Week Security Deposit
- Holding deposit equivalent to 1 week of rent
- Rent to be payable monthly in advance
- EPC Rating B (83)

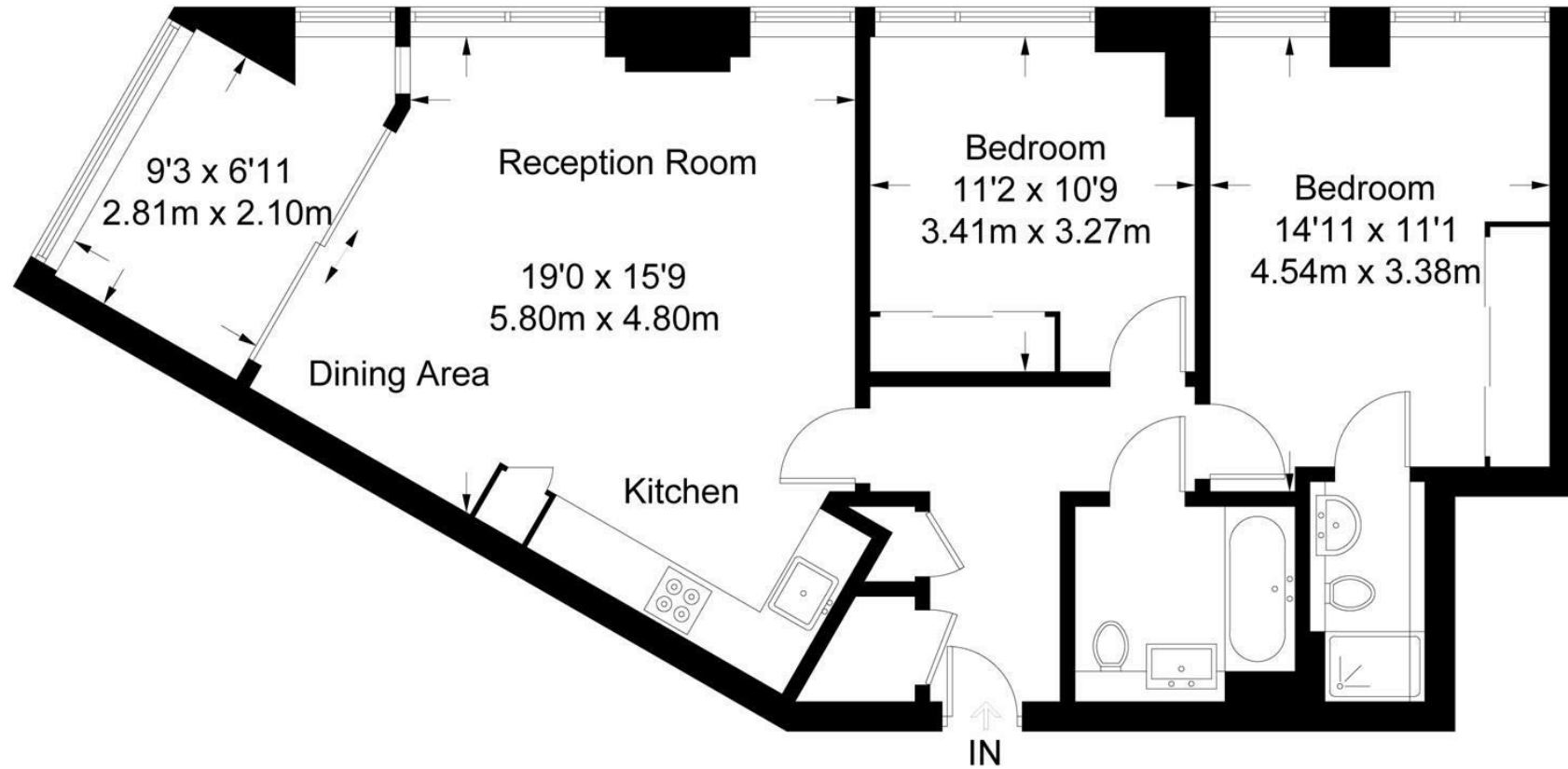
- 2 Bedrooms
- 850sq.ft (79sq.m)
- 2 Bathrooms (1 En-Suite)
- Dual Aspect Open Plan Reception Room
- Modern Integrated Kitchen
- Winter Garden
- Amazing Views of the River Thames & Tower Bridge
- Utility Cupboard
- 24 Hour Concierge
- 0.1 Miles to Canada Water Station



EPC certificate available on request.

Ontario Point

Approximate Gross Internal Area = 850 sq ft / 79 sq m



Twenty First Floor

Not to scale, for guidance only and must not be relied upon as a statement of fact.
All measurements and areas are approximate only and have been prepared in accordance with the current edition of the RICS Code of Measuring Practice.

