



1 Albert Embankment, London
SE1

GARTON JONES.COM



1 Albert Embankment, London , SE1

GARTON JONES.COM

9 Albert
Embankment
London
SE1 7SP

Sales +44 (0) 20 7735 1888
nineelms@gartonjones.com
www.gartonjones.com

£495 Per Week

A beautifully appointed 1-bedroom apartment offering 441sq.ft (40.9sq.m) located on the 5th floor of Parliament View Apartments, a prestigious residential development on the River Thames by Lambeth Bridge. Boasting floor-to-ceiling windows that provide South-East views, this well-presented property features a spacious bedroom, an open-plan reception room with an integrated kitchen, comfort cooling, and a modern bathroom suite. Residents of Parliament View Apartments enjoy the convenience of a 24-hour concierge service and have access to a well-equipped gymnasium. The location offers excellent transportation links, with a frequent bus service right on your doorstep, and the Vauxhall rail links just a few minutes' walk away. Furthermore, the amenities of Westminster are easily accessible by taking a short walk across Lambeth Bridge.

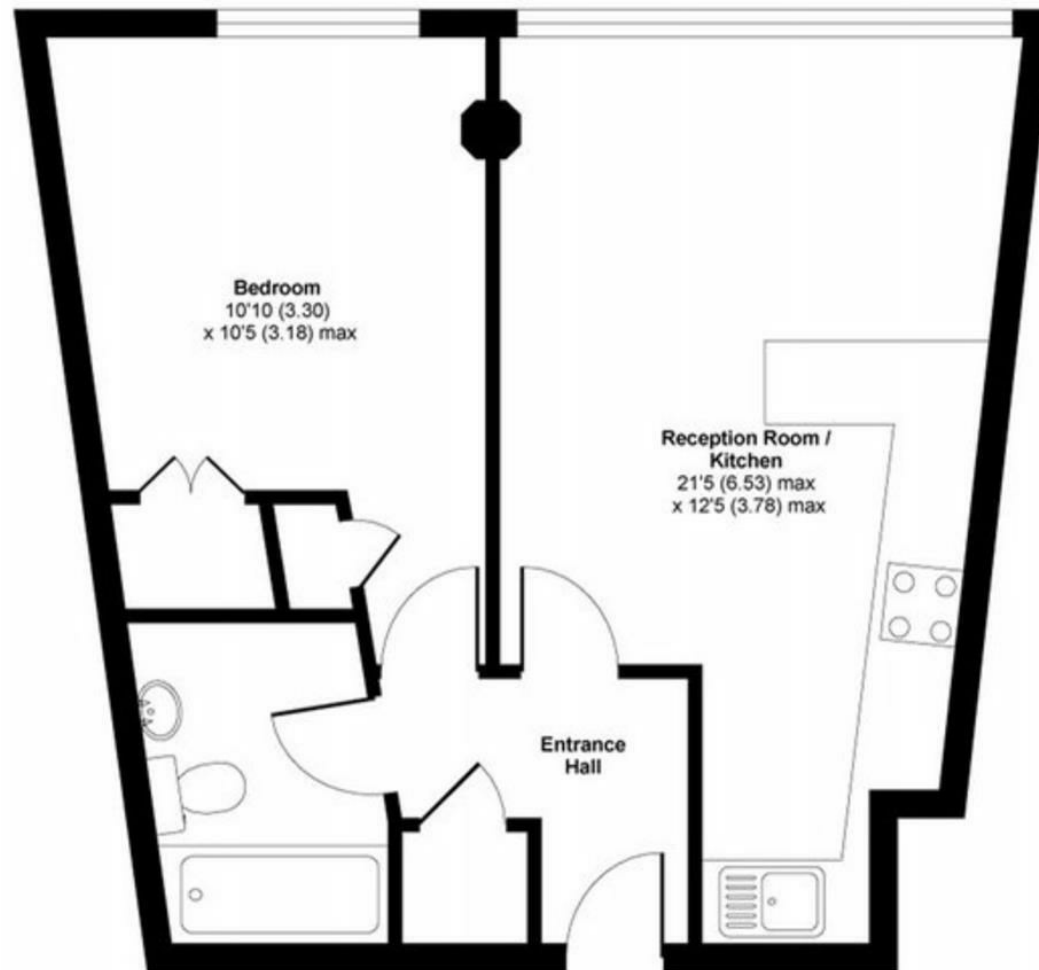
Please note photos are of a similar apartment in the building and just to be used as reference.

- Electricity Supply — Mains | Water Supply — Mains | Sewerage — Mains | Heating — Comfort Cooling
- Broadband & Mobile Signal : Check Coverage via Ofcom
- Parking: No Parking Included
- Lift Access
- Building Safety: EWS1 Available on Request
- Council Tax Band E (London Borough of Lambeth)
- 5 Week Security Deposit
- Holding deposit equivalent to 1 week of rent
- Rent to be payable monthly in advance
- EPC Rating B (83)

- 1 Bedroom
- 441sq.ft (40.9sq.m)
- Bathroom
- Open Plan Reception
- Modern Kitchen
- Floor to Ceiling Windows
- 24 Hour Concierge
- Residents Gym
- South-East Aspect
- 0.6 Miles to Vauxhall Station



EPC certificate available on request.



GROSS INTERNAL AREA 441 SQFT 40.9 SQM

