



4 Riverlight Quay, London
SW11

GARTON JONES.COM

4 Riverlight Quay, London , SW11

GARTON JONES.COM

9 Albert
Embankment
London
SE1 7SP

Sales +44 (0) 20 7735 1888
nineelms@gartonjones.com
www.gartonjones.com

£880 Per Week

A fantastic 2-bedroom apartment to rent of approx. 794sq.ft (73.73sq.m) of Riverlight Quay, a popular development located on the banks of the River Thames and neighbouring Battersea Power Station and the US Embassy in the heart of Nine Elms. This property further benefits from an open plan reception room with full height floor to ceiling windows, there are 2 private balconies with partial views of the river, a kitchen with Siemens integrated appliances, 2 luxury bathrooms (1 en-suite), wood flooring and comfort cooling. Residents of Riverlight Quay benefit from exclusive facilities to include a fantastic Heated Swimming Pool, Jacuzzi, Sauna and Steam Room as well as a well-equipped mezzanine "river view" Gymnasium. There is also a reception lounge and library, 24-hour concierge and a private cinema screening room and virtual golf room. The on-site amenities include the Black Cab Coffee Co, Nine Elms Tavern and Waitrose supermarket and there are plenty of nearby new restaurants and bars adding to the increasing vibrancy of Nine Elms. Nine Elms Tube Station and Battersea Power Station Northern Line tube stops are now open and both a short walk away from Riverlight Quay.

Please note furniture may differ to that shown in the current photos.

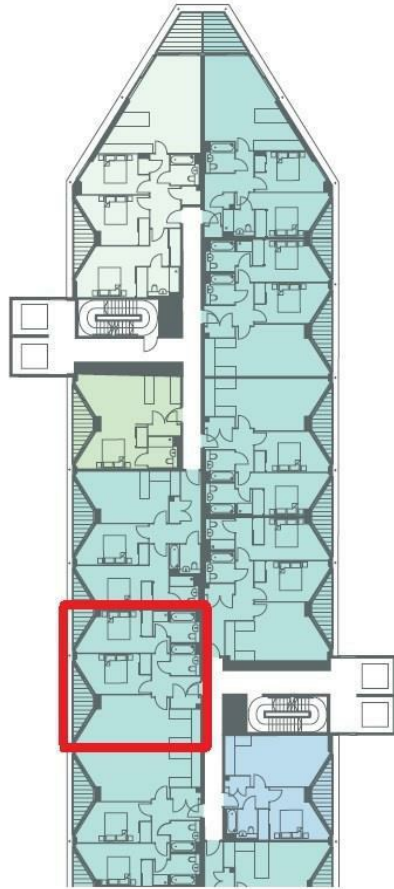
- Electricity Supply — Mains | Water Supply — Mains | Sewerage — Mains | Heating — Comfort Cooling
- Broadband & Mobile Signal : Check Coverage via Ofcom
- Parking: No Parking Included
- Lift Access
- Building Safety: EWS1 Available on Request
- Council Tax Band F (London Borough of Wandsworth)
- 5 Week Security Deposit
- Holding deposit equivalent to 1 week of rent
- Rent to be payable monthly in advance
- EPC Rating B (86)

- 2 Bedrooms
- 794sq.ft (73.7sq.m)
- 2 Bathrooms (1 En-Suite)
- Partial Views of the River Thames
- 2 Balconies
- 24 Hour Concierge
- Residents Gym
- Swimming Pool, Spa & Sauna Facilities
- Cinema Screening Room & Virtual Golf Room
- 0.2 Miles to Battersea Power Station Tube

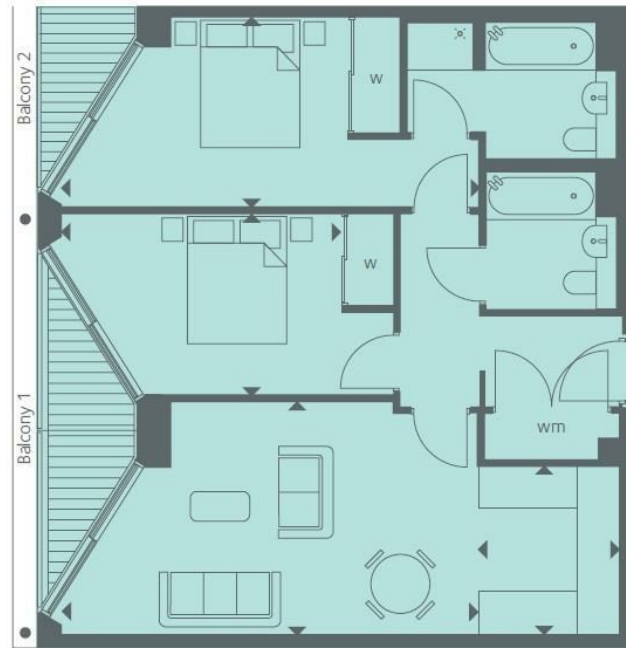


EPC certificate available on request.

Thames River



LEVEL 9



LEVEL	9
INTERNAL AREA M ² / SQ FT	73.73 / 794
EXTERNAL AREA M ² / SQ FT	7.26 / 78.1
Living / Dining	6.34m x 3.55m / 20'8" x 11'6"
Kitchen	2.56m x 2.16m / 8'4" x 7'1"
Bedroom 1	6.36m x 2.89m / 20'9" x 9'5"
Bedroom 2	4.26m x 2.75m / 14'0" x 9'0"
Balcony 1	5.28m x 1.49m / 17'3" x 4'9"
Balcony 2	2.64m x 1.49m / 8'7" x 4'9"

