



24 Albert Embankment, London
SE1

GARTONJONES.COM



24 Albert Embankment, London
, SE1

GARTON JONES.COM

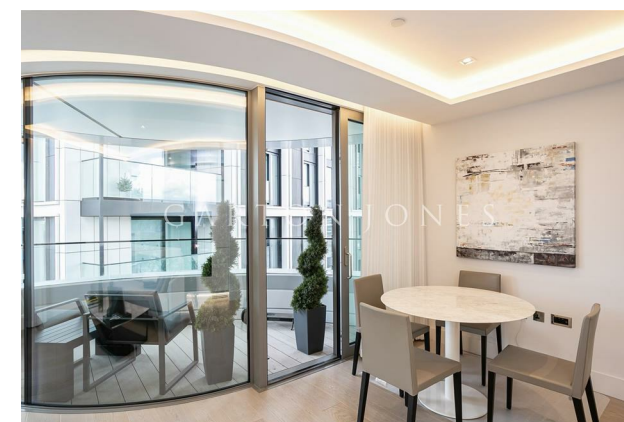
9 Albert
Embankment
London
SE1 7SP

Lettings:
+44 (0) 20 7735 1888
nineelms@gartonjones.com
www.gartonjones.com

£1,000 Per Week

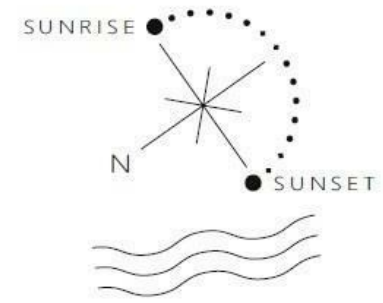
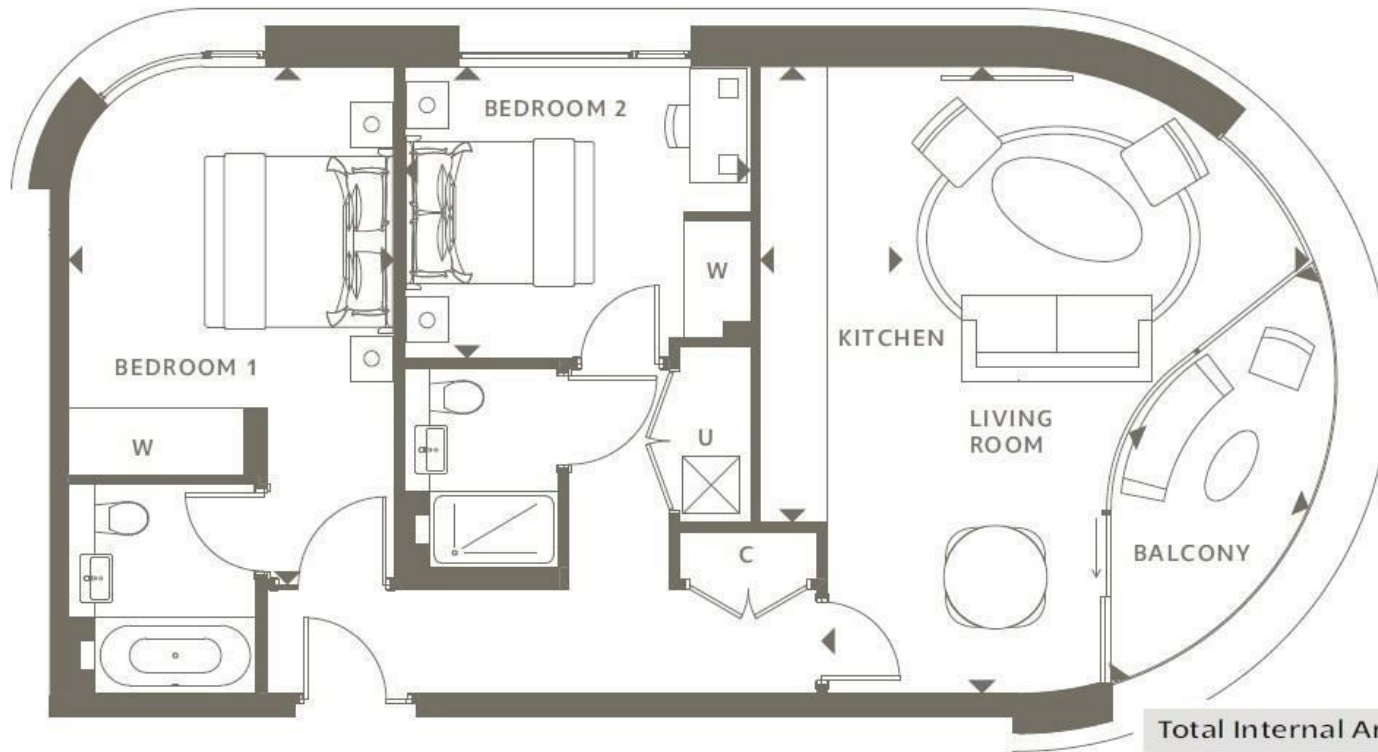
A spacious 2-bedroom apartment of 820sq.ft (76.24sq.m) available to rent in The Corniche, an exclusive residential development by St James, located on the South Bank of the River Thames at Albert Embankment. This property benefits from an open plan reception room with fully fitted interior designed kitchen, 2 luxury bathrooms (1 en-suite), good storage throughout, comfort cooling & partial views towards the River Thames. Residents Of The Corniche also have exclusive access to first class on-site amenities, including a 19th floor Skyline Club Lounge and bar, an extensive health and wellness suite offering spa treatments, a gymnasium with private training facilities and an indoor infinity pool, a cinema screening room, games room and ten-pin bowling. The Corniche is a short walk from Vauxhall Station, as is the vibrant London Southbank offering residents easy access to many restaurants, bars & theatres.

- 2 Bedrooms
- 820sq.ft (76sq.m)
- 2 Bathrooms (1 En-Suite)
- Open Plan Reception
- Balcony
- 24 Hour Concierge
- Swimming Pool, Sauna, Steam Room & Spa Facilities
- 19th Floor Residents Lounge & Bar
- Cinema Screening Room & Bowling Alley
- 0.4 Miles from Vauxhall Station



Please note furniture may differ to that shown in the current photos.

- Electricity Supply — Mains | Water Supply — Mains | Sewerage — Mains | Heating — Comfort Cooling
- Broadband & Mobile Signal : Check Coverage via Ofcom
- Parking: No Parking Included
- Lift Access
- Building Safety: EWS1 Available on Request
- Council Tax Band G (London Borough of Lambeth)
- 6 Week Security Deposit
- Holding deposit equivalent to 1 week of rent
- Rent to be payable monthly in advance
- EPC Rating C (80)



Total Internal Area	76.24 m ²	820.6 ft ²
Total External Area	6.24 m ²	67.1 ft ²

