



Embassy Gardens, London
SW11

GARTONJONES.COM



Embassy Gardens, London , SW11

GARTON JONES.COM

9 Albert
Embankment
London
SE1 7SP

Lettings:
+44 (0) 20 7735 1888
nineelms@gartonjones.com
www.gartonjones.com

£725 Per Week

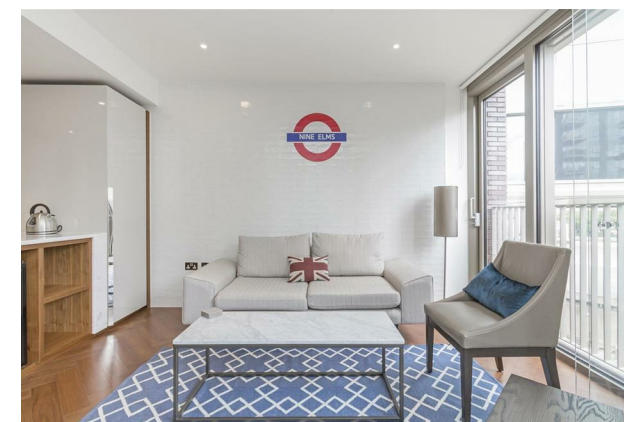
A stunning 1-bedroom apartment of 537sq.ft (49.9sq.m) to rent in Capital Building, Embassy Gardens. This fantastic apartment has been completed to a high standard offering peaceful views over the communal gardens, a spacious open plan reception room with a modern integrated kitchen, winter garden, good storage, utility cupboard and luxury bathroom suite.

Residents of Embassy Gardens also have access to the world-famous sky pool, connecting two of the towers at Legacy Building. Amenities such as District coffee shop, Darbys' restaurant, The Alchemist cocktail bar, as well as a Waitrose convenience store are located on-site but you are also close to a host of other local shops and restaurants on your doorstep. Nine Elms Tube Station is less than a 5 minutes' walk from Embassy Gardens, providing easy access into Central London and the transport links of Vauxhall Station are also within walking distance.

*Please note furniture may differ to that shown in photos

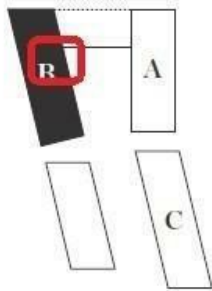
- Electricity Supply — Mains | Water Supply — Mains | Sewerage — Mains | Heating — Comfort Cooling
- Broadband & Mobile Signal : Check Coverage via Ofcom
- Parking: No Parking Included
- Lift Access
- Building Safety: EWS1 Available on Request
- Council Tax Band E (London Borough of Wandsworth)
- 5 Week Security Deposit
- Holding deposit equivalent to 1 week of rent
- Rent to be payable monthly in advance
- EPC Rating B (82)

- 1 Bedroom
- 537sq.ft (50sq.m)
- Garden Views
- Winter Garden
- 24 Hour Concierge
- Sky Pool
- 2 Residents Gyms
- Cinema Screening Room
- Business Suites & Meeting Rooms
- 0.3 Miles to Battersea Power Station Tube



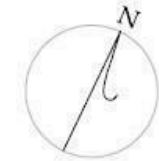
Central London Thames River

Battersea Park



US Embassy

LINEAR PARK



1 Bedroom

Total area:
49.9 sqm / 537 sqft

Living area:
5200 x 4500 mm

Bedroom:
3270 x 3000 mm

Winter Garden:
4.1 sqm

