



2 Riverlight Quay, London  
SW11

GARTONJONES.COM



## 2 Riverlight Quay, London , SW11

### £625 Per Week

A spacious Manhattan Suite apartment of approx. 439sq.ft (40.80sq.m.) in Riverlight Quay, a popular residential complex on the banks of the River Thames. The property has a double bedroom with a sliding door to an open plan reception room with a smart integrated kitchen, floor to ceiling windows, a luxury bathroom suite and full-width balcony. Residents of Riverlight Quay benefit from exclusive facilities to include a fantastic Heated Swimming Pool, Jacuzzi, Sauna and Steam Room as well as a well-equipped mezzanine "river view" Gymnasium. There is also a reception lounge and library, 24-hour concierge and a private cinema screening room and virtual golf room. The on-site amenities include the Black Cab Coffee Co, Nine Elms Tavern and Waitrose supermarket and there are plenty of nearby restaurants and bars adding to the increasing vibrancy of Nine Elms. Nine Elms Tube Station and Battersea Power Station Northern Line tube stops are both a short walk away from Riverlight Quay.

Please note furniture may differ to that shown in the current photos.

- Electricity Supply — Mains | Water Supply — Mains | Sewerage — Mains | Heating — Comfort Cooling
- Broadband & Mobile Signal : Check Coverage via Ofcom
- Parking: No Parking Included
- Lift Access
- Building Safety: EWS1 Available on Request
- Council Tax Band D (London Borough of Wandsworth)
- 5 Week Security Deposit
- Holding deposit equivalent to 1 week of rent
- Rent to be payable monthly in advance
- EPC Rating C (80)

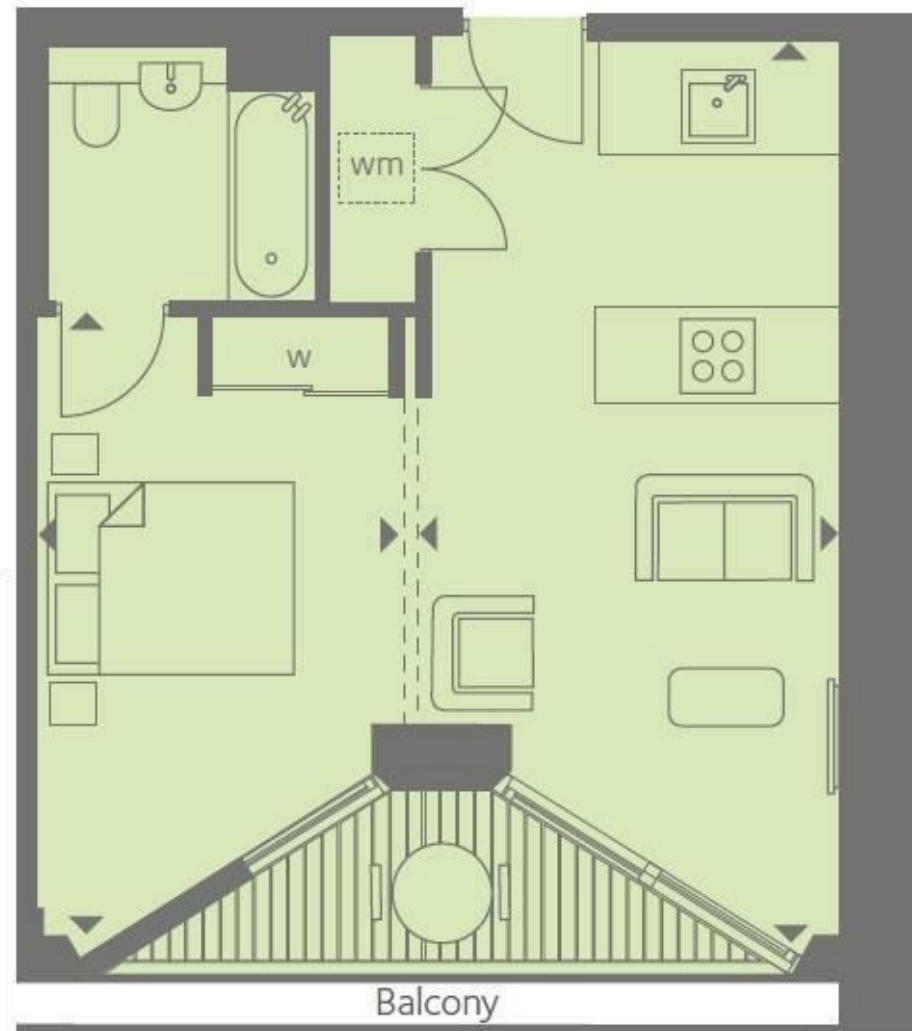
- Manhattan Suite Apartment
- 439sq.ft (40.8sq.m)
- Open Plan Reception
- Parking Available via Separate Negotiation
- Balcony
- 24 Hour Concierge
- Residents Gym
- Swimming Pool, Spa, Sauna & Steam Room
- Cinema Screening Room & Virtual Golf
- 0.3 Miles from Battersea Power Station Tube

## GARTON JONES.COM

9 Albert  
Embankment  
London  
SE1 7SP

Lettings:  
+44 (0) 20 7735 1888  
nineelms@gartonjones.com  
www.gartonjones.com





INTERNAL AREA M<sup>2</sup> / SQ FT 40.80 / 439

