



75 Battersea Park Road, London
SW8

GARTON JONES.COM



75 Battersea Park Road, London
, SW8

GARTON JONES.COM

9 Albert
Embankment
London
SE1 7SP

Sales +44 (0) 20 7735 1888
nineelms@gartonjones.com
www.gartonjones.com

£550 Per Week

A beautifully presented, bright and very spacious 1-bedroom apartment offering 556sq.ft (51.6sq.m) available for rent in Viridian Apartments, a modern residential development located opposite Battersea Power Station. The apartment is in a quiet position overlooking the communal courtyard and benefits from an open plan reception with floor to ceiling windows providing fantastic natural light and direct access to a full width private terrace with bright West facing aspect, a modern integrated kitchen, good storage throughout, and benefits from secure underground parking. Residents of Viridian Apartments have a dedicated 24-hour concierge service, a resident's gym, and access to communal roof terraces with panoramic views of London. Viridian Apartments is also conveniently located directly opposite Battersea Power Station tube station and further benefits from easy access to a plethora of restaurants, shops, and cafes all on-site at the Power Station.

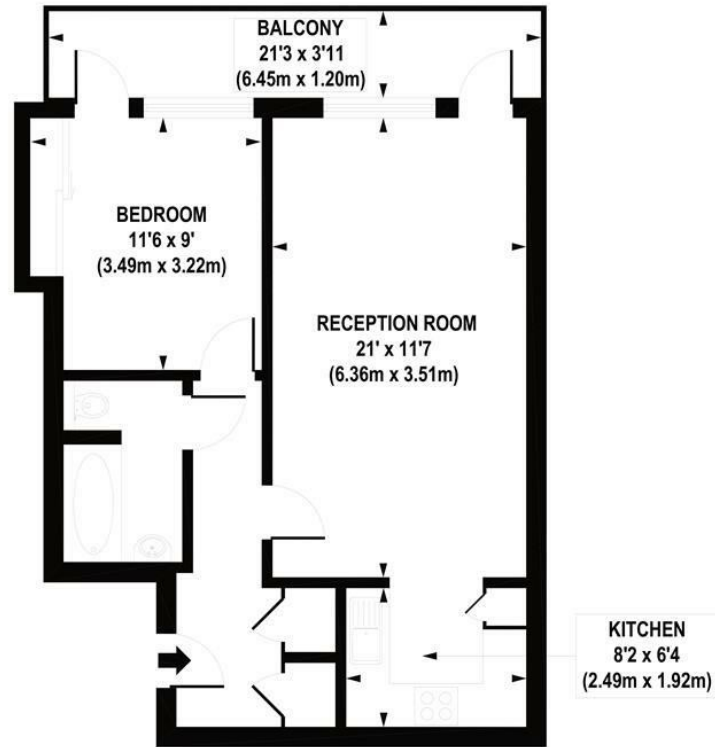
Please note furniture may differ to that shown in the current photos.

- Electricity Supply — Mains | Water Supply — Mains (included in the rent) | Sewerage — Mains | Heating — Central Heating
- Broadband & Mobile Signal : Check Coverage via Ofcom
- Parking: 1 x Secure Underground Parking Space
- Lift Access
- Building Safety: EWS1 Available on Request
- Council Tax Band D (London Borough of Wandsworth)
- 5 Week Security Deposit
- Holding deposit equivalent to 1 week of rent
- Rent to be payable monthly in advance
- EPC Rating B (82)

- 1 Bedroom
- 556sq.ft (51.6sq.m)
- Large Balcony
- West Facing
- Secure Underground Parking
- Good Storage
- 24 Hour Concierge
- Residents Gym
- Communal Roof Terrace & Garden
- 0.1 Miles to Battersea Power Station Tube



EPC certificate available on request.



APPROX. GROSS INTERNAL FLOOR AREA 556 sq. ft / 51.66 q. m

