



4 Riverlight Quay, London
SW11

GARTONJONES.COM



4 Riverlight Quay, London , SW11

£850 Per Week

A beautiful 2-bedroom apartment of approx. 795sq.ft (73.89sq.m) available for rent in Riverlight Quay, one of the most popular new build developments on the banks of the River Thames near Battersea Power Station and the US Embassy. This apartment has an open plan reception room with a smart kitchen with a breakfast bar and Siemens integrated appliances including a wine cooler and coffee machine, there is wood flooring, comfort cooling, 2 balconies with partial views of the River Thames, 2 bathrooms (1 en-suite) and good storage including a dressing area in the master bedroom and built-in wardrobes to the second.

Residents of Riverlight Quay have the use of a 24-hour concierge, a residents health spa with a well-equipped "river view" gymnasium, a heated swimming pool with steam room, sauna, and a Jacuzzi, as well as a cinema screening room and virtual golf facility. The on-site amenities include the Black Cab Coffee Co, Nine Elms Tavern, and Sainsbury's. There is also a Waitrose supermarket at Embassy Gardens, opposite, and you will also be within easy reach of other local shops and restaurants forming the Nine Elms regeneration with both Nine Elms & Battersea Power Station Tube Stations on your doorstep.

Please note furniture may differ to that shown in the current photos.

- Electricity Supply — Mains | Water Supply — Mains | Sewerage — Mains | Heating — Comfort Cooling
- Broadband & Mobile Signal : Check Coverage via Ofcom
- Parking: No Parking Included
- Lift Access
- Building Safety: EWS1 Available on Request
- Council Tax Band F (London Borough of Wandsworth)
- 5 Week Security Deposit
- Holding deposit equivalent to 1 week of rent
- Rent to be payable monthly in advance
- EPC Rating B (86)

- 2 Bedrooms
- 795sq.ft (73.89sq.m)
- 2 Bathrooms (1 En-Suite)
- Views of the River Thames
- Open Plan Reception
- 2 Balconies
- 24 Hour Concierge
- Residents Gym
- Swimming Pool, Spa, & Jacuzzi
- 0.2 Miles to Battersea Power Station

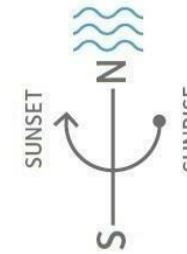
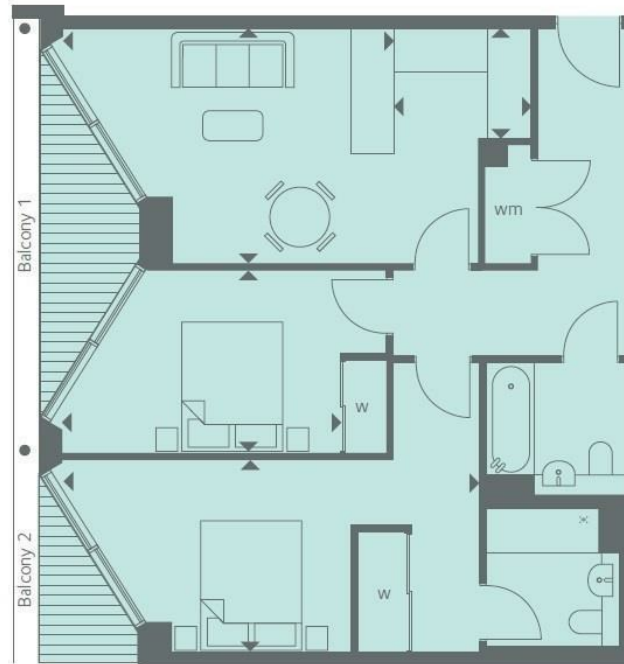
GARTON JONES.COM

9 Albert
Embankment
London
SE1 7SP

Lettings:
+44 (0) 20 7735 1888
nineelms@gartonjones.com
www.gartonjones.com



Thames River



INTERNAL AREA M ² / SQ FT	73.89 / 795
EXTERNAL AREA M ² / SQ FT	7.26 / 78.1
Living / Dining	5.00m x 3.55m / 16'4" x 11'6"
Kitchen	2.06m x 1.65m / 6'8" x 5'4"
Bedroom 1	6.28m x 2.89m / 20'6" x 9'5"
Bedroom 2	4.18m x 2.75m / 13'7" 9'0"
Balcony 1	5.28m x 1.49m / 17'3" x 4'9"
Balcony 2	2.64m x 1.49m / 8'7" x 4'9"

