



9 Albert Embankment, London
SE1

GARTON JONES.COM



9 Albert Embankment, London , SE1

£525 Per Week

A contemporary 1-bedroom apartment of approx. 569sq.ft (53sq.m) available to rent in 9 Albert Embankment, a modern riverside development located on the Southbank of the River Thames between Lambeth & Vauxhall Bridge. The property is presented in good condition and comprises of a modern, open-plan integrated kitchen and spacious reception, good storage, an internal facing balcony and a modern bathroom. 9 Albert Embankment is a secure development with a 24-hour concierge and on-site convenience store located just moments from London's trendy South Bank and a great selection of shops, bars, and restaurants. Transport links are excellent with Vauxhall Rail, Tube and Bus services within a few minutes' walk. There is also a taxi rank at the neighbouring River Park Plaza Hotel and a River Taxi Pier at St George Wharf, also within easy reach.

Please note furniture may differ to that shown in the current photos.

- Electricity Supply — Mains | Water Supply — Mains (included in the rent) | Sewerage — Mains | Heating — Electric Radiators
- Broadband & Mobile Signal : Check Coverage via Ofcom
- Parking: No Parking Included
- Lift Access
- Building Safety: EWS1 Available on Request
- Council Tax Band E (London Borough of Lambeth)
- 5 Week Security Deposit
- Holding deposit equivalent to 1 week of rent
- Rent to be payable monthly in advance
- EPC Rating C (80)

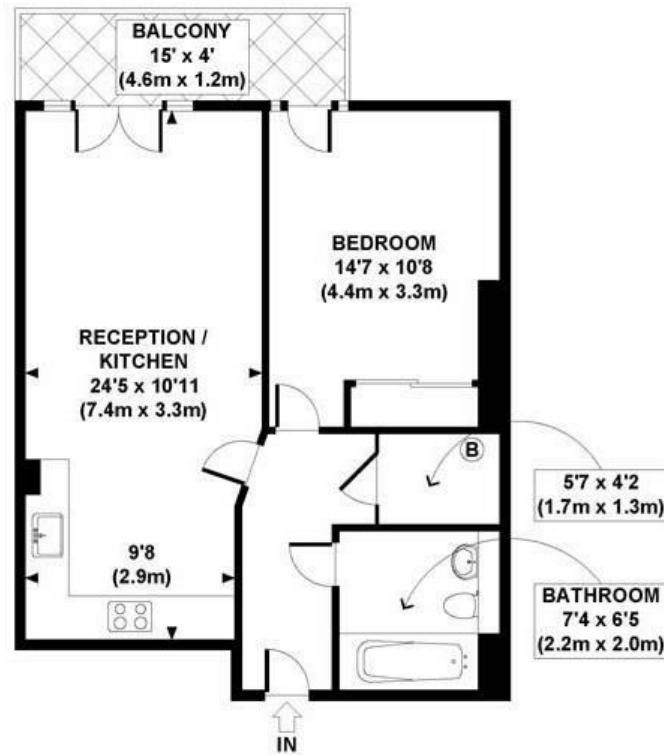
- 1 Bedroom
- 569sq.ft (53sq.m)
- Bathroom
- Open Plan Reception Room
- Modern Kitchen
- Balcony
- West facing Aspect
- 24 Hour Concierge
- On-Site Convince Store
- 0.5 Miles to Vauxhall Station

GARTON JONES.COM

9 Albert
Embankment
London
SE1 7SP

Lettings:
+44 (0) 20 7735 1888
nineelms@gartonjones.com
www.gartonjones.com





GROSS INTERNAL
FLOOR AREA 569 SQ FT

APPROX. GROSS INTERNAL FLOOR AREA 569 SQ FT / 53 SQ M

