



Parliament View Apartments, London
SE1

GARTONJONES.COM



Parliament View Apartments, London , SE1

GARTON JONES.COM

9 Albert
Embankment
London
SE1 7SP

Lettings:
+44 (0) 20 7735 1888
nineelms@gartonjones.com
www.gartonjones.com

£750 Per Week

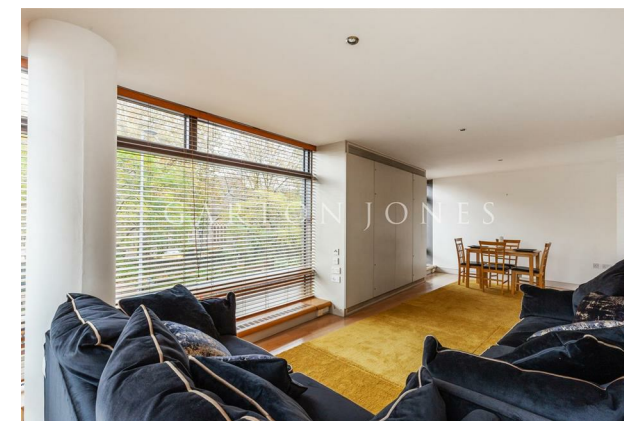
A fantastic 2-bedroom apartment of 863sq.ft (80sq.m) available in Parliament View Apartments, a popular modern development by Lambeth Bridge. With full-width floor to ceiling windows and dual aspect reception, this well presented 2 double bedroom property is offered furnished and further benefits from a reception and dining room, separate integrated kitchen, comfort cooling, a utility cupboard, master bedroom with an en-suite bathroom as well as an additional guest bathroom and secure parking.

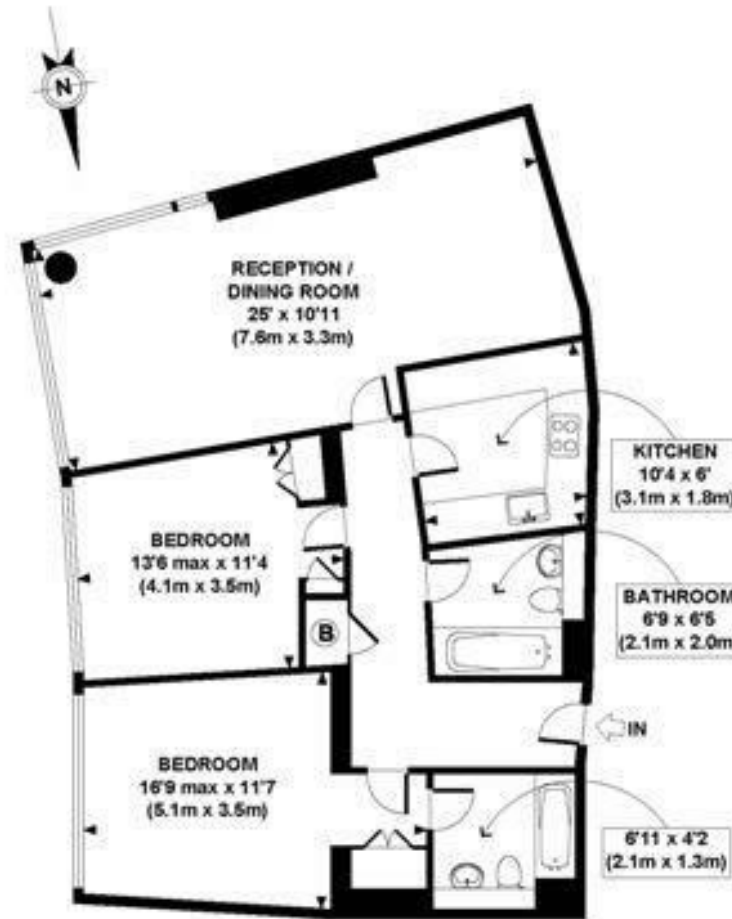
Residents have the benefit a 24-hour concierge and access to a resident's gymnasium. Transport links are excellent with frequent bus service on the doorstep and the rail links of Vauxhall, Lambeth North & Waterloo all a short walk away. Westminster is also easily accessible over Lambeth Bridge.

Please note furniture may differ to that shown in the current photos.

- Electricity Supply — Mains | Water Supply — Mains | Sewerage — Mains | Heating — Comfort Cooling
- Broadband & Mobile Signal : Check Coverage via Ofcom
- Parking: Available via Separate Agreement
- Lift Access
- Building Safety: EWS1 Available on Request
- Council Tax Band G (London Borough of Lambeth)
- 5 Week Security Deposit
- Holding deposit equivalent to 1 week of rent
- Rent to be payable monthly in advance
- EPC Rating B (84)

- 2 Bedroom
- 863sq.ft (80sq.m)
- 2 Bathrooms (1 En-Suite)
- Views of Lambeth Palace
- Dual Aspect Reception
- Separate Kitchen
- Comfort Cooling
- 24 Hour Concierge
- Residents Gym
- 0.5 Miles to Lambeth North Station





FIRST FLOOR
GROSS INTERNAL
FLOOR AREA 863 SQ FT

APPROX. GROSS INTERNAL FLOOR AREA 863 SQ FT / 80 SQ M

SRGJW - 240108

Copyright photoplan.co.uk

Floorplans are for identification and guideline purposes only, not to scale.
Compliant with RICS code of measuring practice.

