



10 Charles Clowes Walk, London
SW11

GARTON JONES.COM



10 Charles Clowes Walk, London , SW11

GARTON JONES.COM

9 Albert
Embankment
London
SE1 7SP

Sales +44 (0) 20 7735 1888
nineelms@gartonjones.com
www.gartonjones.com

£925 Per Week

Welcome to The Residence in the heart of Nine Elms, London SW11! This charming flat boasts a cosy reception room, perfect for relaxing or entertaining guests. With two spacious bedrooms and two well-appointed bathrooms (one en-suite), this property offers comfort and convenience in one package.

Spanning 887sq.ft (82.41sq.m), this flat is ideal for those seeking a stylish and manageable living space in a vibrant London location. Benefitting from two balconies, the property also has views overlooking communal landscaped gardens.

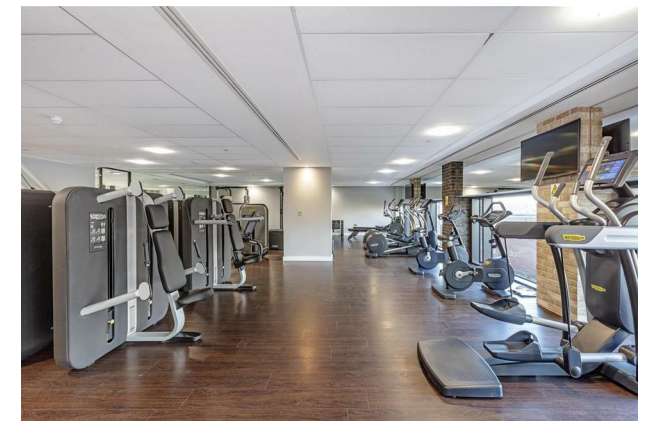
Situated in a prime location, The Residence provides easy access to all the amenities and attractions that Nine Elms has to offer. From trendy cafes and restaurants to beautiful parks and cultural hotspots, you'll never run out of things to see and do.

Don't miss out on the opportunity to make this flat your own and experience the best of London living. Contact us today to arrange a viewing and take the first step towards renting this fantastic property at The Residence.

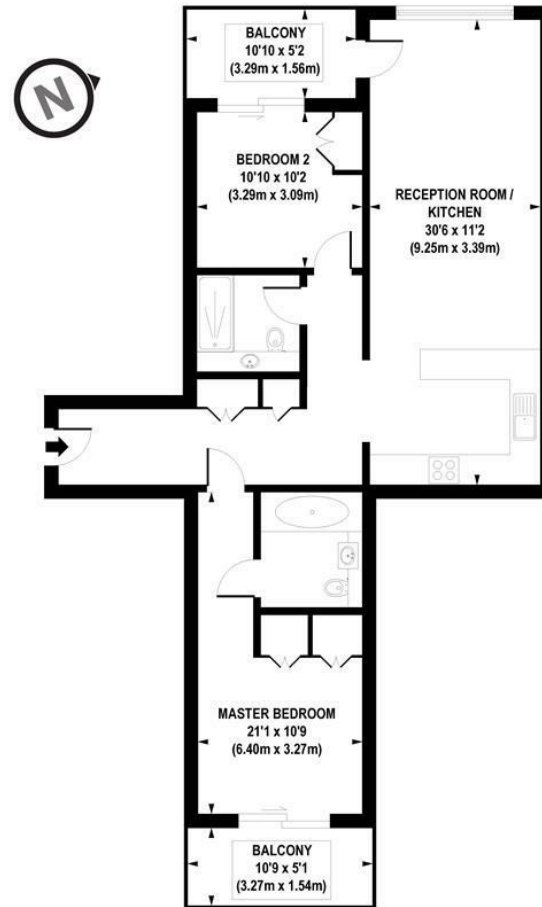
Please note furniture may differ to that shown in the current photos.

- Electricity Supply — Mains | Water Supply — Mains | Sewerage — Mains | Heating — Underfloor Heating
- Broadband & Mobile Signal : Check Coverage via Ofcom
- Parking: No Parking Included
- Lift Access
- Building Safety: EWS1 Available on Request
- Council Tax Band F (London Borough of Wandsworth)
- 5 Week Security Deposit
- Holding deposit equivalent to 1 week of rent
- Rent to be payable monthly in advance
- EPC Rating B (87)

- 2 Bedrooms
- 887sq.ft (82.41sq.m)
- 2 Bathrooms (1 En-Suite)
- 2 Balconies
- Open Plan Reception & Modern Kitchen
- Views over Communal Gardens
- 24 Hour Concierge
- Residents' Gymnasium
- Meeting Room & Residents Screening Room
- 0.2 Miles from Nine Elms Tube Station



EPC certificate available on request.



APPROX. GROSS INTERNAL FLOOR AREA 887 sq. ft / 82.41 sq. m

Floorplan is for illustrative purposes only and is not to scale.
Every attempt has been made to ensure the accuracy of the floorplan shown, however all measurements, fixtures, fittings and data shown are an approximate interpretation for illustrative purposes only.
Liability for errors, omissions or mis-statement through negligence or otherwise is hereby excluded.

CP CREATIVE
PROPERTY MARKETING

