



4 Riverlight Quay, London
SW11

GARTONJONES.COM



4 Riverlight Quay, London , SW11

£835 Per Week

A contemporary 2-bedroom apartment to rent of approx. 830sq.ft (77.15sq.m) in Riverlight Quay, a popular residential development by St James located on the banks of the River Thames. This furnished apartment has an open plan reception room with a smart kitchen with a breakfast bar and Siemens integrated appliances including a wine cooler and coffee machine, there is wood flooring, comfort cooling, 2 balconies with partial views of the river, 2 bathrooms (1 en-suite) and good storage including a dressing area in the master bedroom and built-in wardrobes to the second. Residents of Riverlight Quay benefit from exclusive facilities to include a fantastic Heated Swimming Pool, Jacuzzi, Sauna and Steam Room as well as a well-equipped mezzanine "river view" Gymnasium. There is also a reception lounge and library, 24-hour concierge and a private cinema screening room and virtual golf room. The on-site amenities include the Black Cab Coffee Co, Nine Elms Tavern and Waitrose supermarket and there are plenty of nearby new restaurants and bars adding to the increasing vibrancy of Nine Elms. Nine Elms Tube Station and Battersea Power Station Northern Line tube stops are now open and both a short walk away from Riverlight Quay.

Please note furniture may differ to that shown in the current photos.

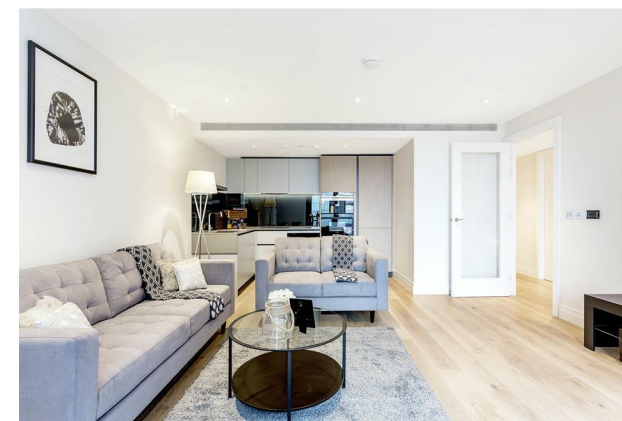
- Electricity Supply — Mains | Water Supply — Mains | Sewerage — Mains | Heating — Comfort Cooling
- Broadband & Mobile Signal : Check Coverage via Ofcom
- Parking: No Parking Included
- Lift Access
- Building Safety: EWS1 Available on Request
- Council Tax Band F (London Borough of Wandsworth)
- 5 Week Security Deposit
- Holding deposit equivalent to 1 week of rent
- Rent to be payable monthly in advance
- EPC Rating B (87)

- 830sq.ft (77.15sq.m)
- 2 Bedrooms
- 2 Bathrooms (1 En-Suite)
- Open Plan Reception Room
- 2 Balconies
- Partial Views of the River Thames
- 24 Hour Concierge
- Residents Gym
- Swimming Pool, Spa & Sauna Facilities
- 0.2 Miles from Battersea Power Station Tube

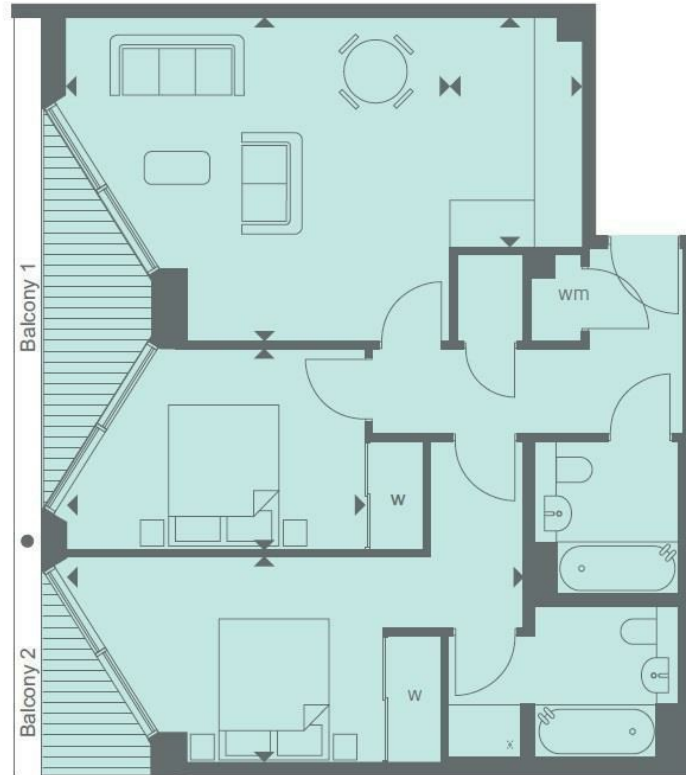
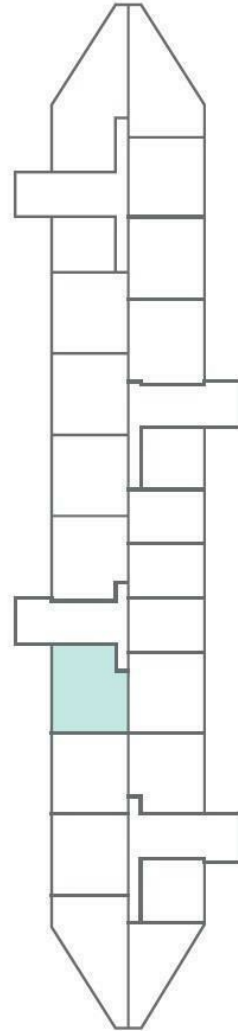
GARTON JONES.COM

9 Albert
Embankment
London
SE1 7SP

Lettings:
+44 (0) 20 7735 1888
nineelms@gartonjones.com
www.gartonjones.com



Thames River



INTERNAL AREA M ² / SQ FT	77.07 / 830	77.15 / 830
EXTERNAL AREA M ² / SQ FT	7.26 / 78.1	
Living / Dining	5.29m × 4.47m / 17'4" × 14'7"	
Kitchen	3.17m × 1.81m / 10'4" × 5'9"	
Bedroom 1	6.36m × 2.88m / 20'9" × 9'4"	
Bedroom 2	4.12m × 2.76m / 13'5" × 9'1"	
Balcony 1	5.28m × 1.49m / 17'3" × 4'9"	
Balcony 2	2.64m × 1.49m / 8'7" × 4'9"	

