



9 Albert Embankment, London  
SE1

GARTON JONES.COM



# 9 Albert Embankment, London , SE1

GARTON JONES.COM

9 Albert  
Embankment  
London  
SE1 7SP

Sales +44 (0) 20 7735 1888  
nineelms@gartonjones.com  
www.gartonjones.com

## £500 Per Week

A fantastic 1-bedroom apartment of 566sq.ft (52sq.m) available to rent on the 8th floor of 9 Albert Embankment, SE1, a popular riverside residential development by Berkeley Homes. This charming property boasts a cosy open plan reception room with a modern integrated kitchen, a well-proportioned bedroom with built-in storage, access to a balcony from both the bedroom & reception, offering partial views towards the River Thames, a modern bathroom suite and additional storage room. Residents of 9 Albert Embankment have the added benefit of a 24-hour concierge and an on-site convenience store, and situated in a prime location, this property provides easy access to all the amenities and attractions that London has to offer. Transport links are very good with Vauxhall, Waterloo and Westminster Rail and Tube services all within a reasonable walking distance.

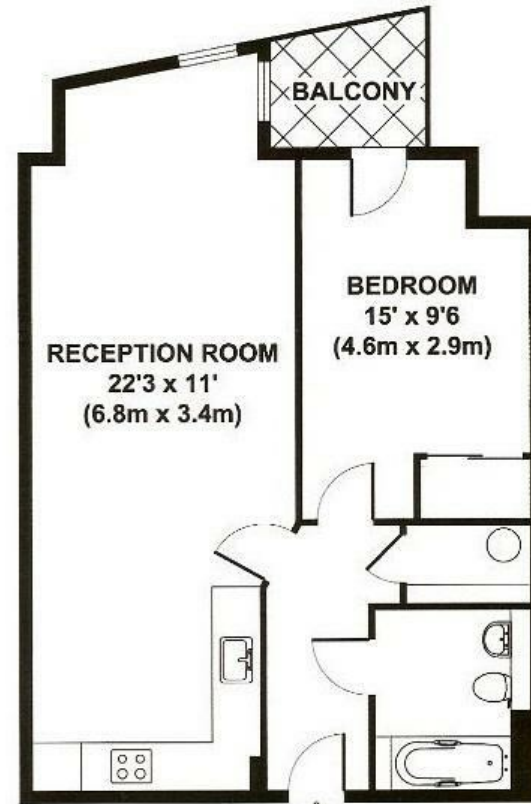
Please note furniture may differ to that shown in the current photos.

- Electricity Supply — Mains | Water Supply — Mains (included in the rent) | Sewerage — Mains | Heating — Electric Radiators
- Broadband & Mobile Signal : Check Coverage via Ofcom
- Parking: Parking Included
- Lift Access
- Building Safety: EWS1 Available on Request
- Council Tax Band E (London Borough of Lambeth)
- 5 Week Security Deposit
- Holding deposit equivalent to 1 week of rent
- Rent to be payable monthly in advance
- EPC Rating C (79)

- 1 Bedroom
- 566sq.ft (52sq.m)
- Bathroom
- Balcony
- Partial Views of River Thames
- Open Plan Reception
- Modern Kitchen
- Good Storage
- 24 Hour Concierge
- 0.6 Miles to Vauxhall Station



EPC certificate available on request.



EIGHTH FLOOR  
GROSS INTERNAL  
FLOOR AREA 566 SQ FT

APPROX. GROSS INTERNAL FLOOR AREA 566 SQ FT / 52 SQ M

