



GARTON JONES

4 Riverlight Quay, Nine Elms  
London SW11

GARTON JONES.COM



## 4 Riverlight Quay, Nine Elms London, SW11

### £675 Per Week

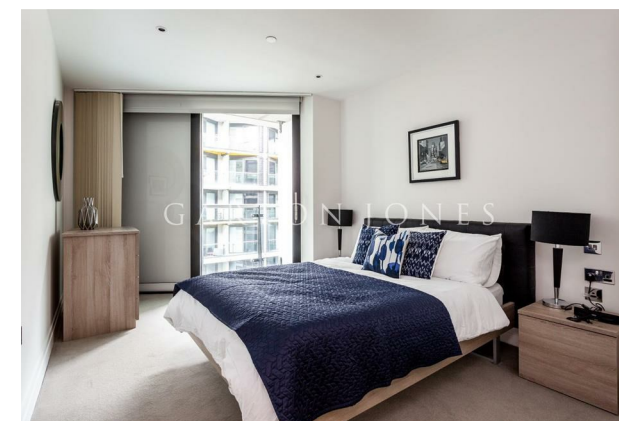
A spacious North-East facing apartment of approx.795 sq.ft (73sq.m) within Riverlight Quay, one of Nine Elms most popular locations on the banks of the River Thames. The property has been finished to a high standard and further benefits from an open plan reception room with full height floor to ceiling windows, there is a smart integrated kitchen, 2 luxury bathrooms (1 en-suite) and 2 balconies. Residents of Riverlight Quay benefit from exclusive facilities to include a fantastic Heated Swimming Pool, Jacuzzi, Sauna and Steam Room as well as a well-equipped mezzanine “river view” Gymnasium. There is also a reception lounge and library, 24-hour concierge and a private cinema screening room and virtual golf room. The on-site amenities include the Black Cab Coffee Co, Nine Elms Tavern and Waitrose supermarket and there are plenty of nearby new restaurants and bars adding to the increasing vibrancy of Nine Elms. Nine Elms Tube Station and Battersea Power Station Northern Line tube stops are now open and both a short walk away from Riverlight Quay.

- 795 sq.ft (73sq.m)
- 2 Bedrooms
- Open Plan Reception
- 2 Balconies
- River Views
- Swimming Pool, Sauna & Steam Room
- Residents Gym
- 24 Hour Concierge
- Moments from Nine Elms Tube Station
- Wandsworth Council Tax Band F

GARTON JONES.COM

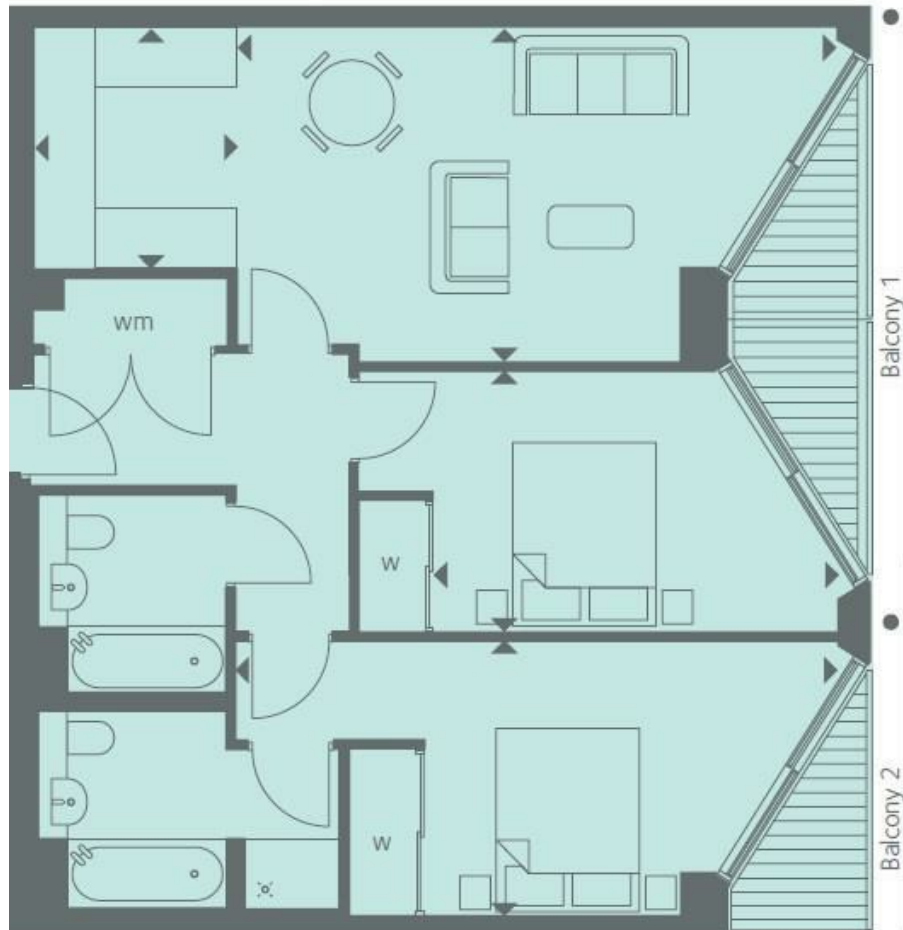
9 Albert  
Embankment  
London  
SE1 7SP

Lettings:  
+44 (0) 20 7735 1888  
nineelms@gartonjones.com  
www.gartonjones.com



INTERNAL AREA M<sup>2</sup> / SQ FT 73.89 / 795

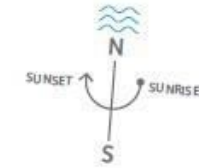
EXTERNAL AREA M<sup>2</sup> / SQ FT 7.26 / 78.1



WM Washing machine

W Wardrobe

◄► Dimensions



PRIVATE GARDENS

