



The Residence, London
SW11

GARTON JONES.COM



The Residence, London , SW11

GARTON JONES.COM

9 Albert
Embankment
London
SE1 7SP

Sales +44 (0) 20 7735 1888
nineelms@gartonjones.com
www.gartonjones.com

£600 Per Week

A fantastic 1-bedroom apartment for rent offering 569sq.ft (52.9sq.m) available to rent in Haines House, The Residence, a high-end residential development in the heart of Nine Elms. The property further benefits from an open plan reception room with a smart, integrated kitchen as well as generous built-in storage throughout including fitted wardrobes in the bedroom. There is also a spacious, private Southeast facing balcony overlooking the landscaped communal gardens. On-site for the residents' private use there is a dedicated 24-hour concierge service, business centre with meeting rooms, a state-of-the-art gymnasium, and a private cinema screening room. Located in the heart of Nine Elms, Residents will also benefit from a plethora of amenities in the local area including District coffee shop, a Waitrose convenience store, The Alchemist bar & restaurant, and Darby's restaurant all on your doorstep with the area ever-growing. Both Vauxhall & Nine Elms Tube Stations are a short walk away providing easy access across London.

Please note furniture may differ to that shown in the current photos.

- Electricity Supply — Mains | Water Supply — Mains | Sewerage — Mains | Heating — Underfloor Heating
- Broadband & Mobile Signal : Check Coverage via Ofcom
- Parking: No Parking Included
- Lift Access
- Building Safety: EWS1 Available on Request
- Council Tax Band E (London Borough of Wandsworth)
- 5 Week Security Deposit
- Holding deposit equivalent to 1 week of rent
- Rent to be payable monthly in advance
- EPC Rating B (86)

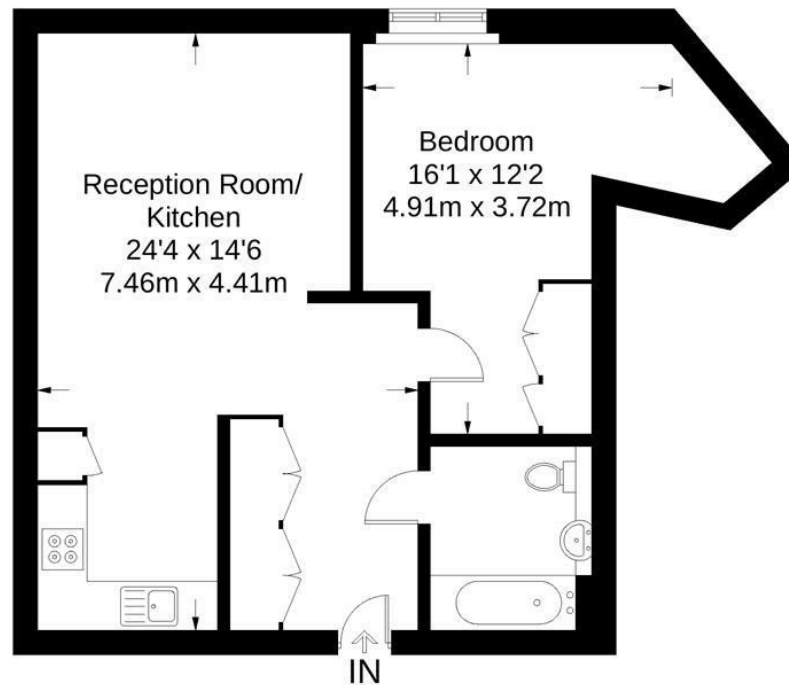
- 1 Bedroom
- 569sq.ft (53sq.m)
- Open Plan Reception
- Modern Integrated Kitchen
- Balcony
- Views over Communal Gardens
- Southeast Aspect
- Residents Gym
- 24 Hour Concierge
- 0.2 Miles from Nine Elms Station



EPC certificate available on request.

Haines House

Approximate Gross Internal Area = 585 sq ft / 54.3 sq m



Not to scale, for guidance only and must not be relied upon as a statement of fact.
All measurements and areas are approximate only and have been prepared in accordance with the current edition of the RICS Code of Measuring Practice.

