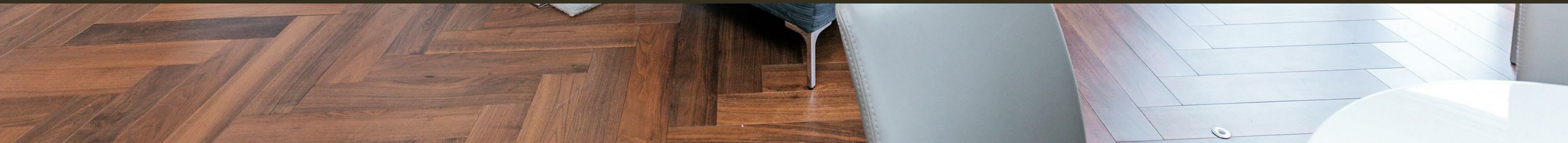




Capital Building, London
Nine Elms SW11

GARTONJONES.COM



Capital Building, London Nine Elms, SW11

£700 Per Week

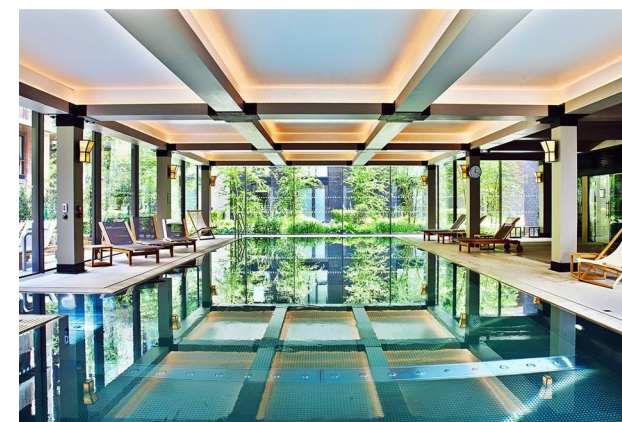
A very spacious South Eastern dual aspect 1 double bedroom apartment of approx. 619 sq ft (57.5 sq m) in the Capital Building, Embassy Gardens. The apartment has an open plan reception room with a large winter garden (6.2sq.m) that can be utilized as extra internal space. There is a smart integrated kitchen, good storage and a luxury bathroom suite. Interiors boast high ceilings, walnut parquet flooring, marble countertops in the kitchens and thermostatically controlled comfort cooling and heating. For the residents' private use there is a 24-hour concierge, cinema, library & lounge, business centre, yoga studio, gymnasium and stunning indoor/outdoor swimming pool. On-site you have a large Waitrose but you will also be within easy reach of many other local shops and restaurants and transport links including Vauxhall which is within a few minutes' walk. Any images used are as a guide only and just for reference.

- 619sq.ft (57.5sq.m)
- South East Facing Aspect
- 1 Double Bedroom
- 1 Luxury Bathroom
- Open Plan Reception Room
- Integrated Kitchen
- 24 Hour Concierge
- Residents Gym, Cinema Screening Room, Lounge & Business Suite
- On-Site Waitrose & Walking Distance to Vauxhall Transport Links

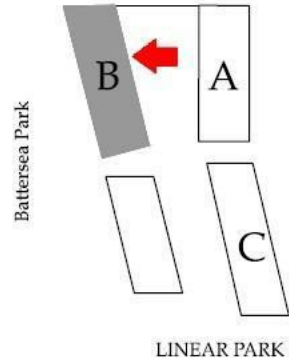
GARTON JONES.COM

9 Albert
Embankment
London
SE1 7SP

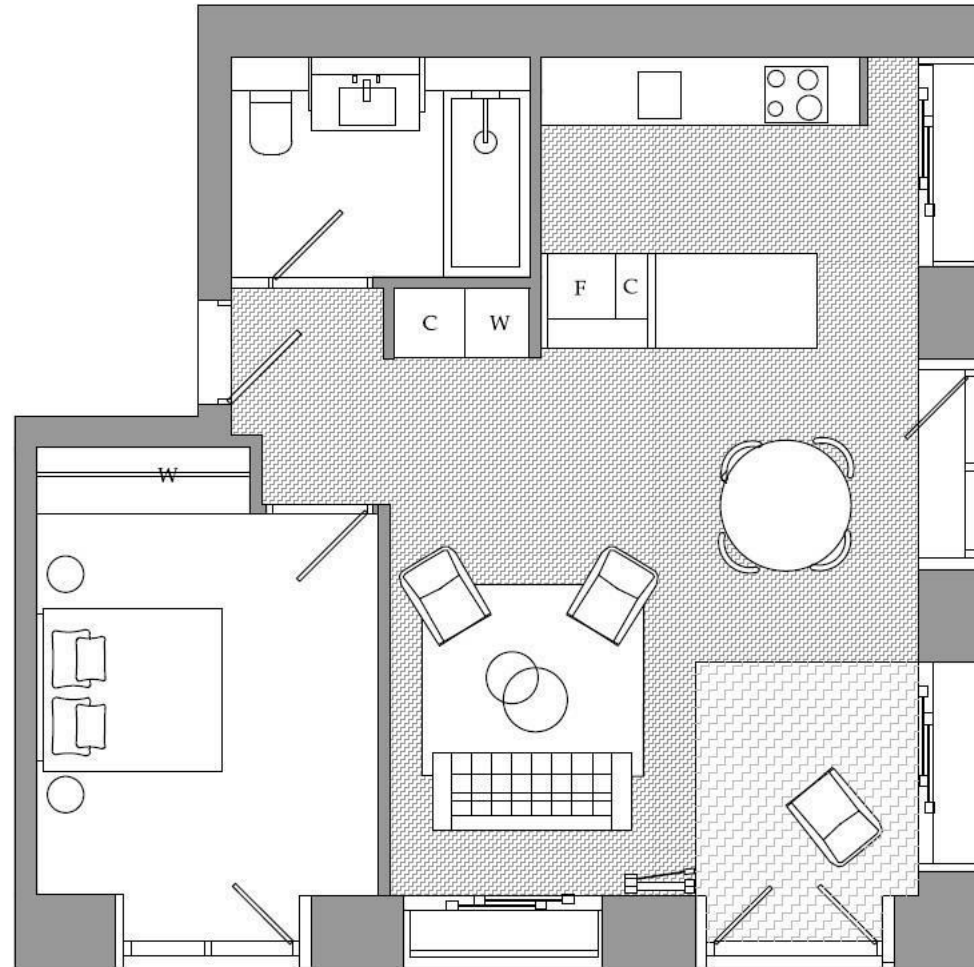
Lettings:
+44 (0) 20 7735 1888
nineelms@gartonjones.com
www.gartonjones.com



Central London
Thames River



US Embassy



1 Bedroom
Total area:
56 sqm/603 sqft
Living area
7920x5200mm
Bedroom 1 :
4245x3200mm
Winter Garden:
5.4sqm

