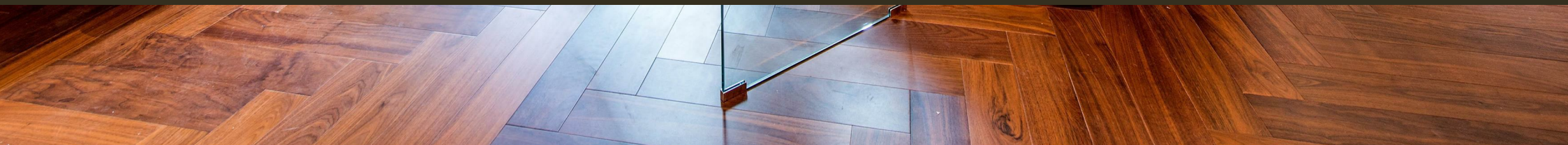




Embassy Gardens, Nine Elms
London SW11

GARTONJONES.COM



Embassy Gardens, Nine Elms London, SW11

£625 Per Week

A spacious Manhattan Suite apartment of 447sq.ft (41.5sq.m) in Capital Building, Embassy Gardens. This spacious apartment further benefits from an open plan reception room with a modern integrated kitchen, access to a large private balcony with great views, good storage, and a luxury bathroom suite. Interiors boast high ceilings, walnut parquet flooring, marble counter tops in the kitchens and comfort cooling & heating. For the residents' private use there is a 24-hour concierge, cinema screening room, library & lounge, business centre, yoga studio, 2 private gymnasiums, and a very cool indoor/outdoor swimming pool. Residents of Embassy Gardens also have access to the world-famous sky pool, connecting two of the towers at Legacy Building. Amenities such as District coffee shop, Darbys' restaurant, The Alchemist cocktail bar, as well as a Waitrose convenience store are located on-site but you are also close to a host of other local shops and restaurants on your doorstep. Nine Elms tube station, part of the Northern Line extension, is less than a 5 minutes' walk from Capital Building providing easy access into Central London and the transport links of Vauxhall Station are also within walking distance.

Please note furniture may differ to that shown in the current photos.

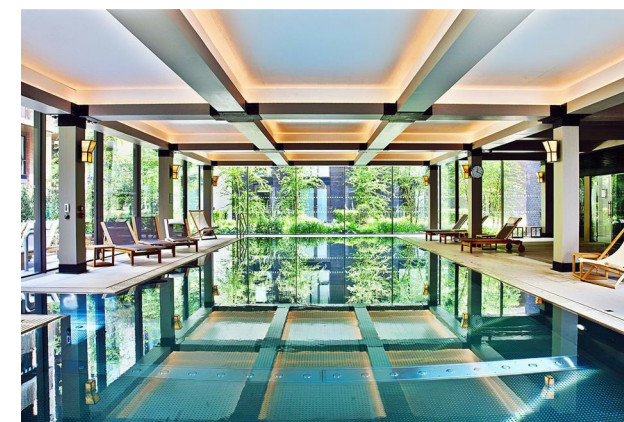
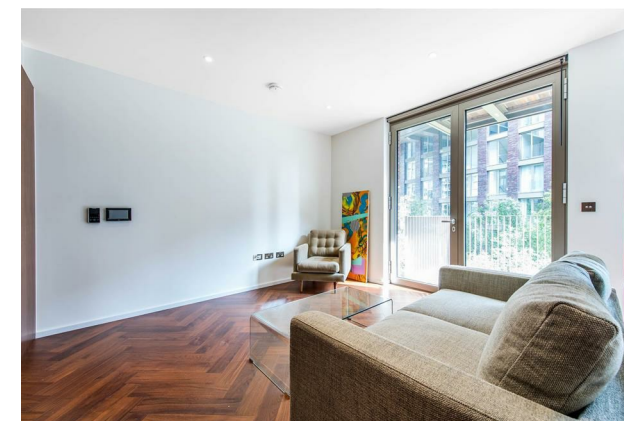
- Electricity Supply — Mains | Water Supply — Mains | Sewerage — Mains | Heating — Comfort Cooling
- Broadband & Mobile Signal : Check Coverage via Ofcom
- Parking: No Parking Included
- Lift Access
- Building Safety: EWS1 Available on Request
- Council Tax Band E (London Borough of Wandsworth)
- 5 Week Security Deposit
- Holding deposit equivalent to 1 week of rent
- Rent to be payable monthly in advance
- EPC Rating B (82)

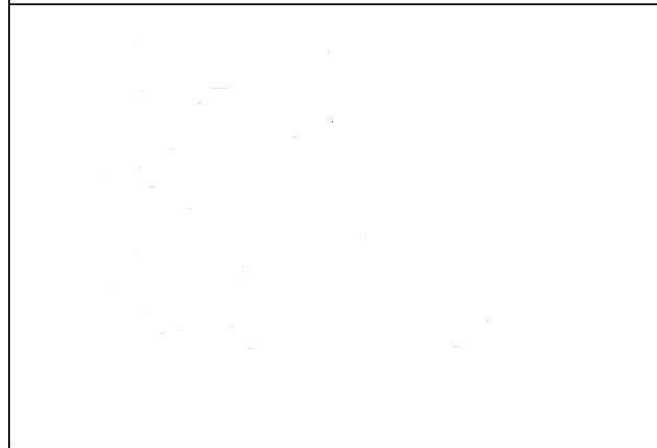
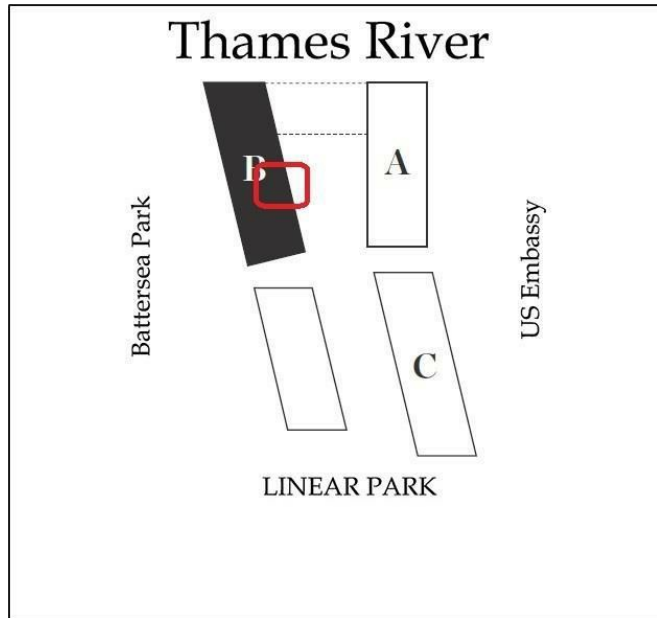
- Manhattan Suite Apartment
- 447sq.ft (41.5sq.m)
- Open Plan Reception
- Large Private Balcony
- 24 Hour Concierge
- 2 Residents Gyms
- Sky Pool
- Cinema Screening Room
- Business Suite
- 0.4 Miles from Battersea Power Station Tube

GARTON JONES.COM

9 Albert
Embankment
London
SE1 7SP

Lettings:
+44 (0) 20 7735 1888
nineelms@gartonjones.com
www.gartonjones.com





North arrow

Suite
Total area:
41.5 sqm / 447 sqft
Living area:
6500 x 3580 mm
Bedroom:
3625 x 2580 mm
Balcony:
4.2 sqm

Detailed description: A detailed floor plan of a suite. The plan shows a living area with a sofa and coffee table, a bedroom with a bed, a kitchen with a sink and stove, and a bathroom with a toilet and shower. A balcony is attached to the living area. The plan is labeled with 'A', 'B', 'C', 'F', 'T', 'W', and 'P'. A north arrow is located in the top right corner.

