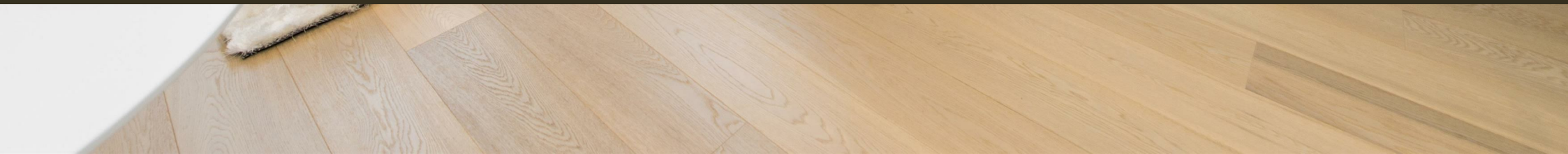




81 Black Prince Road, London
SE1

GARTON JONES.COM



81 Black Prince Road, London
, SE1

GARTON JONES.COM

9 Albert
Embankment
London
SE1 7SP

Sales +44 (0) 20 7735 1888
nineelms@gartonjones.com
www.gartonjones.com

£475 Per Week

Welcome to Parliament House, located on Black Prince Road in the vibrant area of Vauxhall, London. This stunning property offers a Manhattan Suite studio apartment with a cleverly designed partition wall that separates the bedroom from the living space and kitchen, providing a sense of privacy and functionality. Spanning 419sq.ft (38.9sq.m), this 9th floor modern flat boasts a contemporary design with floor-to-ceiling windows that offer breathtaking views towards the iconic Houses of Parliament and the River Thames.

In addition to its prime location and impressive views, Parliament House offers a range of amenities for residents to enjoy. From a convenient day porter service to a well-equipped residents' gym and secure bicycle storage, this property caters to your every need. This Manhattan Suite studio apartment in Parliament House is sure to impress and we highly recommend viewings at the earliest opportunity.

Please note furniture may differ to that shown in the current photos.

- Electricity Supply — Mains | Water Supply — Mains | Sewerage — Mains | Heating — Underfloor Heating
- Broadband & Mobile Signal : Check Coverage via Ofcom
- Parking: No Parking Included
- Lift Access
- Building Safety: Parliament House does not currently hold a satisfactory EWS1 rating and remedial works are required, however, there are interim measures in place
- Council Tax Band D (London Borough of Lambeth)
- 5 Week Security Deposit
- Holding deposit equivalent to 1 week of rent
- Rent to be payable monthly in advance
- EPC Rating C (80)

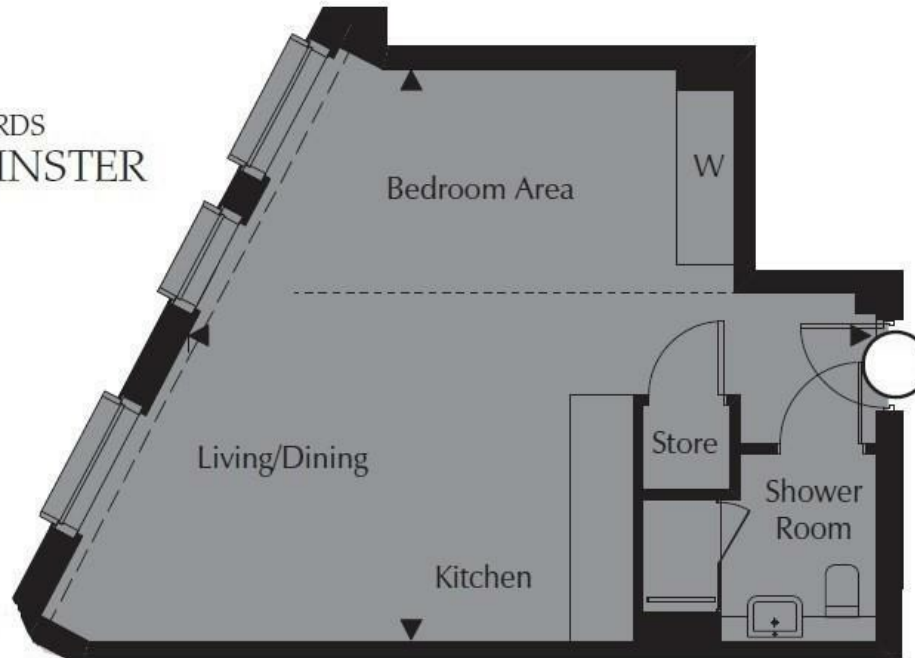
- Manhattan Suite Apartment
- 419sq.ft (38.9q.m)
- Views of Houses of Parliament & River Thames
- Bathroom
- Open Plan
- Modern Integrated Kitchen
- Good Storage
- Residents Gym
- Day Porter
- 0.6 Miles to Vauxhall Station



EPC certificate available on request.



VIEW TOWARDS
WESTMINSTER



Kitchen/Living/Dining/ Bedroom Area	7.13m x 5.87m	23'4" x
Total Area	38.9 sq m	419 sq



