



24 Albert Embankment, London
SE1

GARTONJONES.COM



24 Albert Embankment, London
, SE1

GARTON JONES.COM

9 Albert
Embankment
London
SE1 7SP

Lettings:
+44 (0) 20 7735 1888
nineelms@gartonjones.com
www.gartonjones.com

£700 Per Week

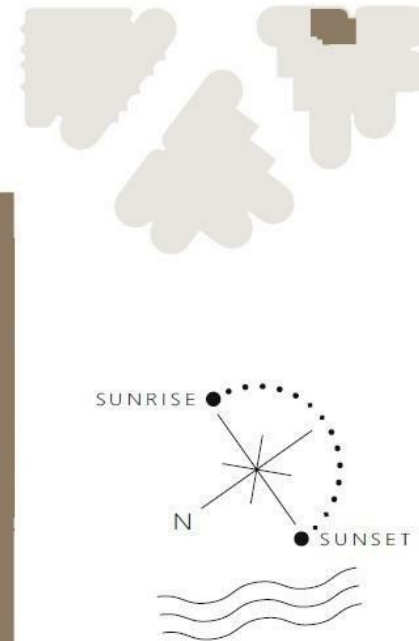
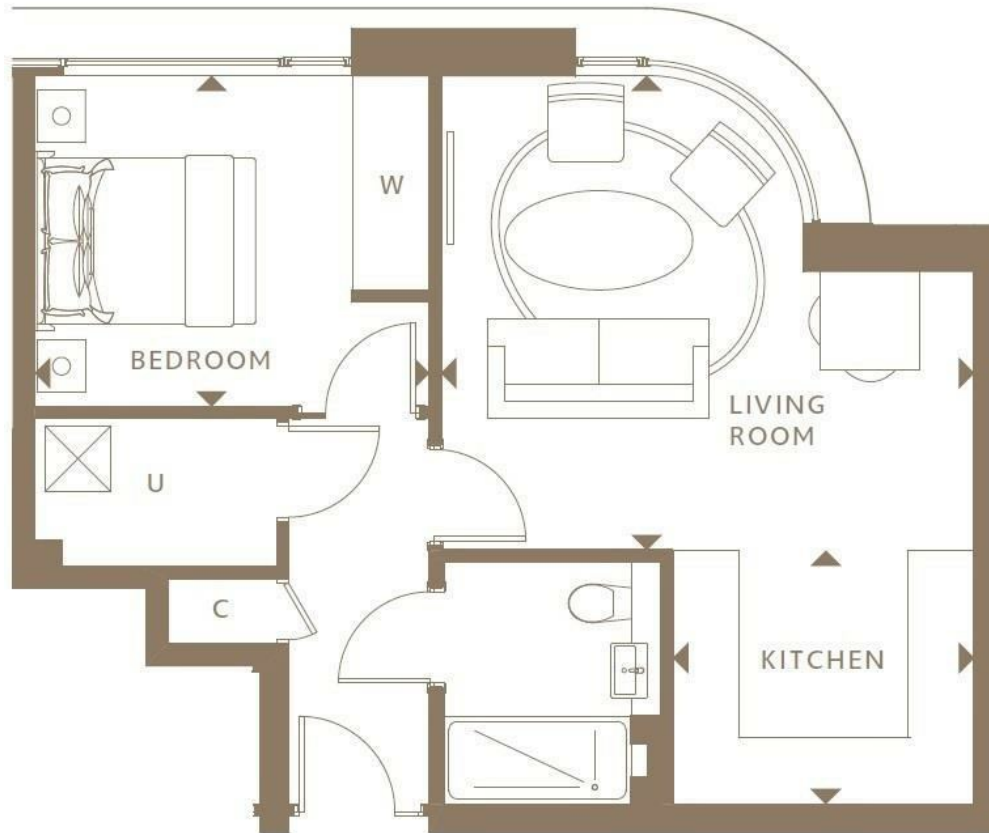
A spacious, 1-bedroom apartment of 526sq.ft (48.8sq.m) available to rent in the Corniche, a landmark riverside development by St James, located on Albert Embankment. This beautifully interior designed apartment comprises an open plan kitchen, dining & reception room with a fully fitted kitchen with Miele appliances, a luxury bathroom, and a utility cupboard with good storage. Designed by the internationally acclaimed architectural practise, Foster and Partners, residents will also have exclusive access to a 19th floor Skyline Club Lounge, an extensive health and wellness suite offering spa treatments, a gymnasium with private training facilities and an indoor infinity pool plus a screening room, games room, billiards room and ten-pin bowling. Vauxhall Station is a short walk away offering the Victoria Line underground, Overground services, and bus links, all providing easy access into Central London.

Please note furniture may differ to that shown in the current photos.

- Electricity Supply — Mains | Water Supply — Mains | Sewerage — Mains | Heating — Comfort Cooling
- Broadband & Mobile Signal : Check Coverage via Ofcom
- Parking: No Parking Included
- Lift Access
- Building Safety: EWS1 Available on Request
- Council Tax Band F (London Borough of Lambeth)
- 5 Week Security Deposit
- Holding deposit equivalent to 1 week of rent
- Rent to be payable monthly in advance
- EPC Rating B (85)

- 1 Bedroom
- 526sq.ft (48.8sq.m)
- Open Plan Reception
- Beautifully Interior Designed
- 24 Hour Concierge
- Residents Gym
- Swimming Pool, Jacuzzi, Sauna, Spa & Steam Room
- Cinema Screening Room
- 19th Floor Residents Lounge & Bar
- 0.4 Miles to Vauxhall Station





TYPE 3

Living Room	4.83 x 4.30m	15'1" x 14'1"
Kitchen	2.73 x 2.30m	9'0" x 7'7"
Bedroom	3.57 x 3.00m	11'9" x 9'10"
Total Internal Area	48.87 m²	526.0 ft²

