



4 Riverlight Quay, London
SW11

GARTON JONES.COM

4 Riverlight Quay, London , SW11

£650 Per Week

An amazing 1-bedroom apartment of approx. 522sq.ft (48.48sq.m.) available to rent in Riverlight Quay, a popular development in the heart of Nine Elms and on the banks of the River Thames. This contemporary apartment has an open plan reception room with a smart integrated kitchen, wood flooring with underfloor heating, comfort cooling, luxury bathroom, and spacious balcony overlooking beautiful communal gardens. Residents of Riverlight Quay benefit from exclusive facilities to include a fantastic Heated Swimming Pool, Jacuzzi, Sauna and Steam Room as well as a well-equipped mezzanine "river view" Gymnasium. There is also a reception lounge and library, 24-hour concierge and a private cinema screening room and virtual golf room. The on-site amenities include the Black Cab Coffee Co, Nine Elms Tavern and Waitrose supermarket and there are plenty of nearby new restaurants and bars adding to the increasing vibrancy of Nine Elms. Nine Elms Tube Station and Battersea Power Station Northern Line tube stops are both a short walk away from Riverlight Quay.

Please note furniture may differ to that shown in the current photos.

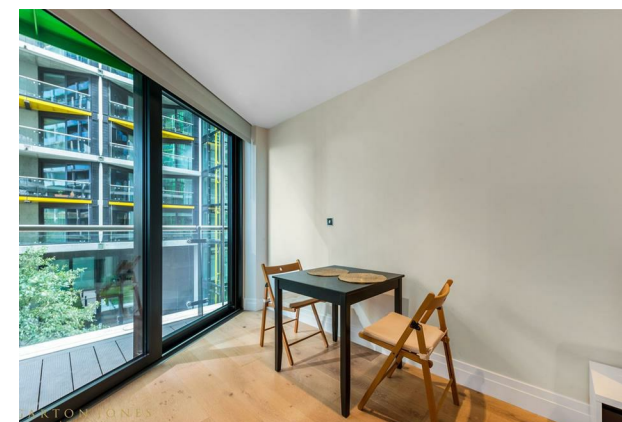
- Electricity Supply — Mains | Water Supply — Mains | Sewerage — Mains | Heating — Comfort Cooling
- Broadband & Mobile Signal : Check Coverage via Ofcom
- Parking: No Parking Included
- Lift Access
- Building Safety: EWS1 Available on Request
- Council Tax Band E (London Borough of Wandsworth)
- 5 Week Security Deposit
- Holding deposit equivalent to 1 week of rent
- Rent to be payable monthly in advance
- EPC Rating B (85)

- 1 Bedroom
- 522sq.ft (48sq.m)
- Open Plan Reception
- East Facing Aspect
- Balcony
- 24 Hour Concierge
- Residents Gym
- Swimming Pool, Sauna, Steam Room & Spa
- Cinema Screening Room & Virtual Golf
- 0.2 Miles from Battersea Power Station Tube Station

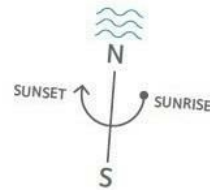
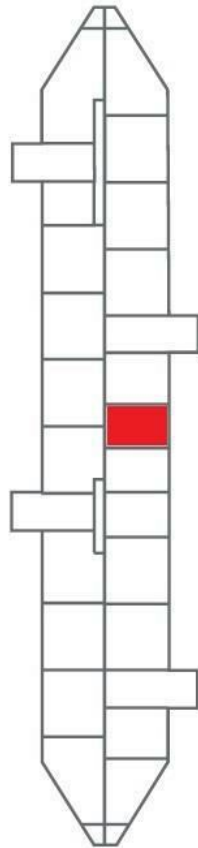
GARTON JONES.COM

9 Albert
Embankment
London
SE1 7SP

Lettings:
+44 (0) 20 7735 1888
nineelms@gartonjones.com
www.gartonjones.com



River Thames



INTERNAL AREA M ² / SQ FT	48.42 / 521	48.48 / 522
EXTERNAL AREA M ² / SQ FT	4.84 / 52.1	
Living / Dining	6.36m × 3.35m / 20'9" × 11'0"	
Kitchen	2.14m × 1.96m / 7'0" × 6'4"	
Bedroom 1	4.20m × 2.75m / 13'8" × 9'0"	
Balcony	5.28m × 1.49m / 17'3" × 4'9"	

