



81 Black Prince Road, London  
SE1

GARTONJONES.COM



81 Black Prince Road, London  
, SE1

£550 Per Week

GARTON JONES.COM

9 Albert  
Embankment  
London  
SE1 7SP

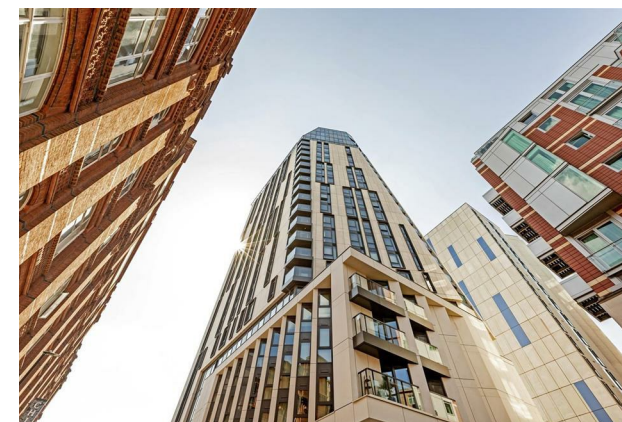
Lettings:  
+44 (0) 20 7735 1888  
nineelms@gartonjones.com  
www.gartonjones.com

A fantastic 1-bedroom apartment of approx. 575sq.ft (53.4sq.m) available to rent on the 8th floor in Parliament House, a popular residential development by Telford Homes set back from the River Thames. Enjoying a South facing aspect, this property benefits from fantastic natural light in all principal rooms. The apartment is offered furnished and comprises an open plan reception room, modern integrated kitchen, double bedroom, luxury bathroom and great storage. Residents also enjoy a concierge service, exclusive residents' gymnasium, and cycle storage. Parliament House is a 23-storey tower within easy reach of the excellent transport services of Vauxhall including rail, tube, and bus links as well as a river taxi pier at St George Wharf.

Please note furniture may differ to that shown in the current photos.

- Electricity Supply — Mains | Water Supply — Mains | Sewerage — Mains | Heating — Underfloor Heating
- Broadband & Mobile Signal: Check Coverage via Ofcom
- Parking: No Parking Included
- Lift Access
- Building Safety: Parliament House does not currently hold a satisfactory EWS1 rating and remedial works are required, however, there are interim measures in place
- Council Tax Band E (London Borough of Lambeth)
- 5 Week Security Deposit
- Holding deposit equivalent to 1 week of rent
- Rent to be payable monthly in advance
- EPC Rating C (80)

- 1 Bedroom
- 575sq.ft (53.4sq.m)
- 1 Bathroom
- Modern Integrated Kitchen
- Underfloor Heating
- South Facing
- Bathroom
- Residents Gym
- Day Porter
- 0.6 Miles to Vauxhall Station





## APARTMENT

Kitchen/Living/ Dining	6.13m x 4.18m	20'1" x 13'8"
Bedroom	4.48m x 4.04m	14'8" x 13'3"
<b>Total Area</b>	<b>53.4 sq m</b>	<b>575 sq ft</b>

