



Parliament House, London
SE1

GARTONJONES.COM



Parliament House, London , SE1

£575 Per Week

A truly stunning 1-bedroom sub-penthouse apartment of approx. 565sq.ft (52.5sq.m) available to rent in the highly sought after Parliament House development, built by Telford Homes and located close to the banks of the River Thames by Lambeth Bridge. This unique apartment is on the 20th floor (with lift) and further benefits from breathtaking panoramic views, taking in many of London's iconic landmarks. There is an open plan reception room, modern integrated kitchen, a luxury bathroom suite and good storage.

Residents of Parliament House enjoy a concierge service, the use of a gymnasium and cycle storage and the building is within easy reach of the excellent transport services of Vauxhall including rail, tube and bus links as well as a river taxi pier at St George Wharf. You will also be within walking distance of the Houses of Parliament and London's trendy South Bank is also close by.

Please note furniture may differ to that shown in the current photos.

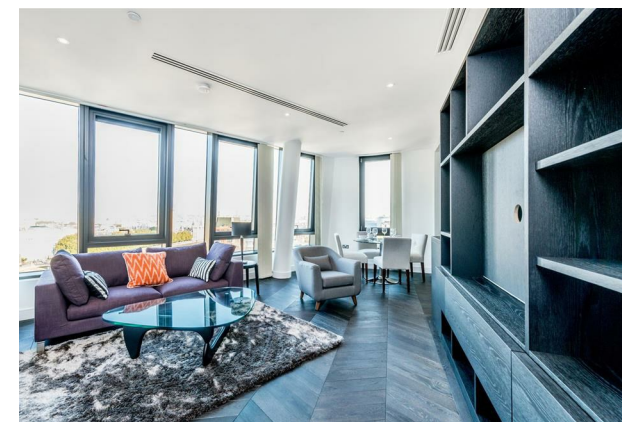
- Electricity Supply — Mains | Water Supply — Mains | Sewerage — Mains | Heating — Comfort Cooling
- Broadband & Mobile Signal : Check Coverage via Ofcom
- Parking: No Parking Included
- Lift Access
- Building Safety: Parliament House does not currently hold a satisfactory EWS1 rating and remedial works are required, however, there are interim measures in place
- Council Tax Band G (London Borough of Lambeth)
- 5 Week Security Deposit
- Holding deposit equivalent to 1 week of rent
- Rent to be payable monthly in advance
- EPC Rating C (76)

- 1 Bedroom
- 565sq.ft (52.5sq.m)
- Sub-Penthouse Apartment
- Open Plan Reception Room
- Unfurnished
- Balcony
- Day Porter
- Stunning Views of the Houses of Parliament
- Residents Gym
- 0.6 Miles to Vauxhall Station

GARTON JONES.COM

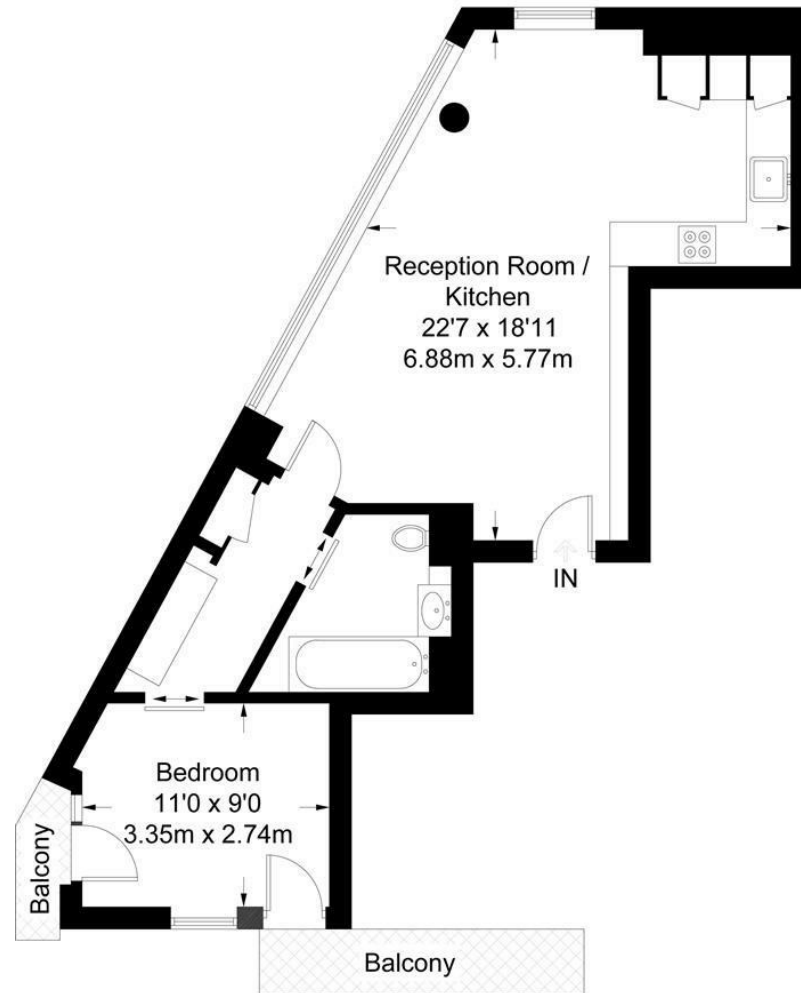
9 Albert
Embankment
London
SE1 7SP

Lettings:
+44 (0) 20 7735 1888
nineelms@gartonjones.com
www.gartonjones.com



Parliament House

Approximate Gross Internal Area = 565 sq ft / 52.5 sq m



Twentieth Floor

Not to scale, for guidance only and must not be relied upon as a statement of fact.
All measurements and areas are approximate only and have been prepared in accordance with the current edition of the RICS Code of Measuring Practice.

