

Embassy Gardens, London  
SW11

GARTONJONES.COM





# Embassy Gardens, London , SW11

## £900 Per Week

A stunning 2-bedroom dual aspect apartment of 845sq.ft (78.5sq.m) on the 5th floor of Ambassador Building, Embassy Gardens. This fantastic furnished apartment is in one of the best positions in the development benefitting from amazing views of the American Embassy, River Thames & London, a spacious open plan reception room with a modern integrated kitchen, balcony, good storage, utility cupboard & 2 luxury bathrooms (1 en-suite).

Embassy Gardens is one of the most popular new build developments located in the heart of Nine Elms; for the residents' private use there is a 24-hour concierge, cinema screening room, library & lounge, business centre, yoga studio, 2 private gymnasiums, and a heated indoor/outdoor swimming pool. Residents of Embassy Gardens also have access to the world-famous sky pool, connecting two of the towers at Legacy Building. Amenities such as District coffee shop, Darby's restaurant, The Alchemist cocktail bar, Homeboy bars, as well as a Waitrose convenience store are located on-site but you are also close to a host of other local shops and restaurants on your doorstep. Nine Elms tube station is less than a 5 minutes' walk Embassy Gardens providing easy access into Central London and the transport links of Vauxhall Station are also within walking distance.

Please note furniture may differ to that shown in the current photos.

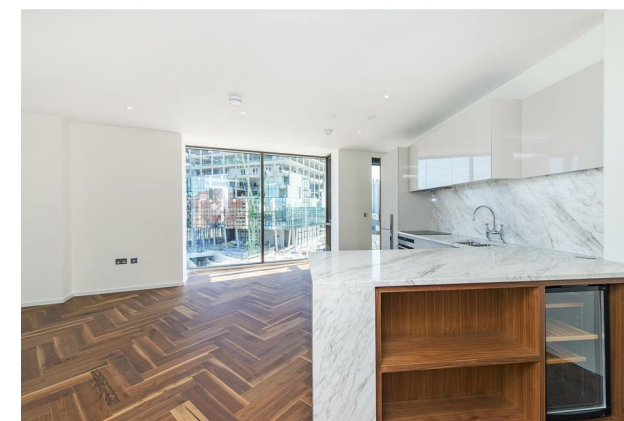
- Electricity Supply — Mains | Water Supply — Mains | Sewerage — Mains | Heating — Comfort Cooling
- Broadband & Mobile Signal : Check Coverage via Ofcom
- Parking: No parking included
- Lift Access
- Building Safety: EWS1 available on request
- Council Tax Band G (London Borough of Wandsworth)
- 12 Month Minimum Term
- 5 Week Security Deposit
- Holding deposit equivalent to 1 week of rent
- Rent to be payable monthly in advance
- EPC Rating C (78)

- 2 Bedrooms
- 845sq.ft (78.5sq.m)
- 2 Bathrooms (1 En-Suite)
- Open Plan Reception Room
- Balcony
- Fantastic Views
- Sky Pool
- 2 Residents Gyms
- 24 Hour Concierge
- 0.3 Miles to Nine Elms Tube Station

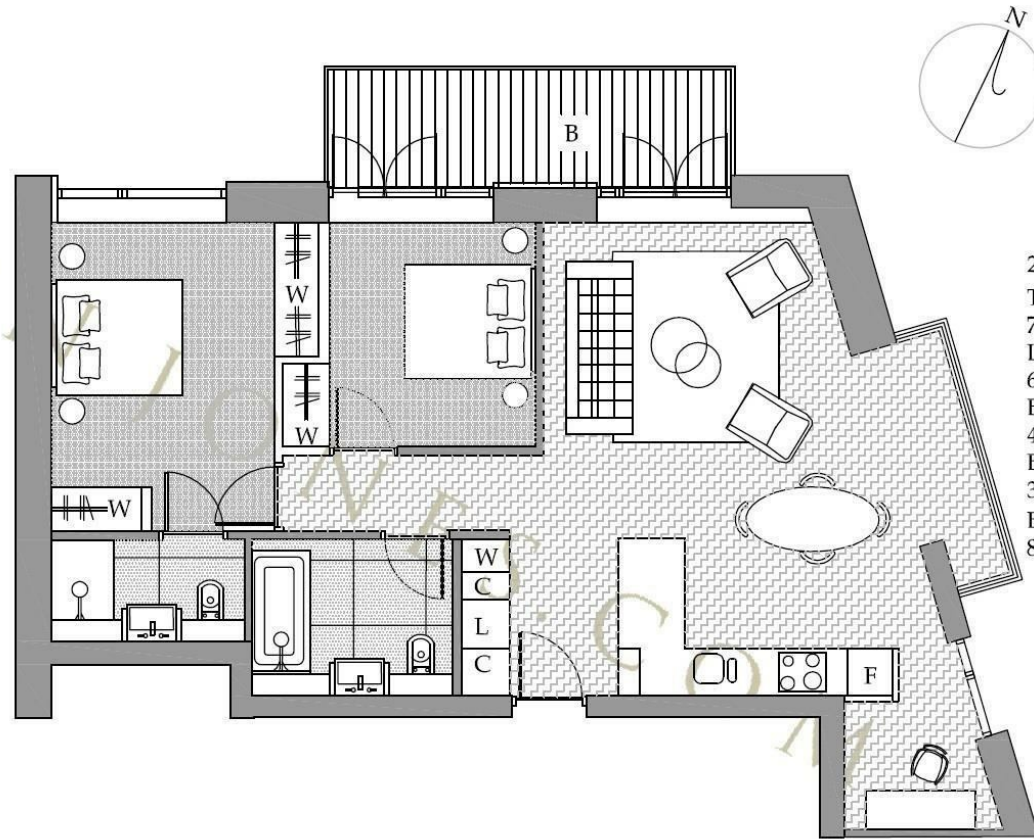
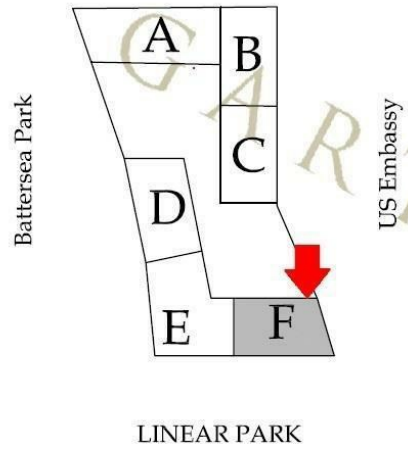
GARTON JONES.COM

9 Albert  
Embankment  
London  
SE1 7SP

Lettings:  
+44 (0) 20 7735 1888  
nineelms@gartonjones.com  
www.gartonjones.com



### Central London Thames River



2 Bedroom  
Total area:  
78.5sqm/845sqft  
Living area  
6675x5710mm  
Bedroom 1 :  
4475x3595mm  
Bedroom 2 :  
3400x3325mm  
Balcony:  
8.4sqm

