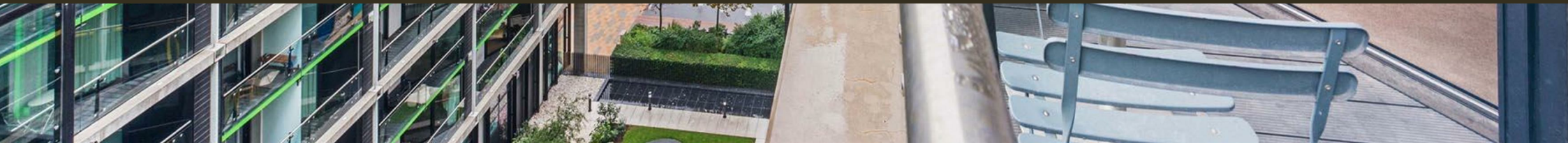




3 Riverlight Quay, London
SW11

GARTONJONES.COM



3 Riverlight Quay, London , SW11

£650 Per Week

A spacious 1-bedroom apartment of approx. 535sq.ft (49.71sq.m.) available to rent in Riverlight Quay, a popular development by St James on the banks of the River Thames. This spacious property has been thoughtfully designed with an open plan reception room with a smart integrated kitchen, floor to ceiling windows providing plenty of natural light, a luxury bathroom suite and a balcony. Located on the banks of the River Thames close to Battersea Power Station, Riverlight offers residents the exclusive use of a health spa with a well-equipped "river view" gymnasium as well as a swimming pool, Jacuzzi, sauna, steam room and treatment room as well as a library and lounge. Riverlight Quay is conveniently located in the heart of Nine Elms with a large selection of new bars, restaurants, and cafes all on your doorstep. Both Nine Elms and Battersea Power Station tube stations are a short walk away providing access to the Northern Line allowing quick access into Central London.

Please note furniture may differ to that shown in the current photos.

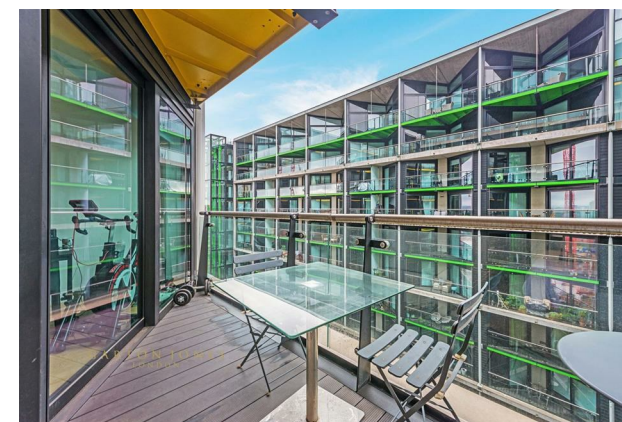
- Electricity Supply — Mains | Water Supply — Mains | Sewerage — Mains | Heating — Comfort Cooling
- Broadband & Mobile Signal : Check Coverage via Ofcom
- Parking: No Parking Included
- Lift Access
- Building Safety: EWS1 Available on Request
- Council Tax Band E (London Borough of Wandsworth)
- 5 Week Security Deposit
- Holding deposit equivalent to 1 week of rent
- Rent to be payable monthly in advance
- EPC Rating B (85)

- 1 Bedroom
- 535sq.ft (49.7sq.m)
- Open Plan Reception
- Modern Integrated Kitchen
- Balcony
- West Facing Aspect
- 24 Hour Concierge
- Residents Gym
- Swimming Pool, Spa & Jacuzzi
- 0.2 Miles to Battersea Power Station Tube

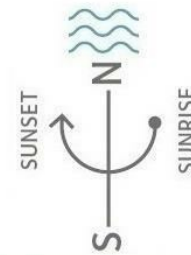
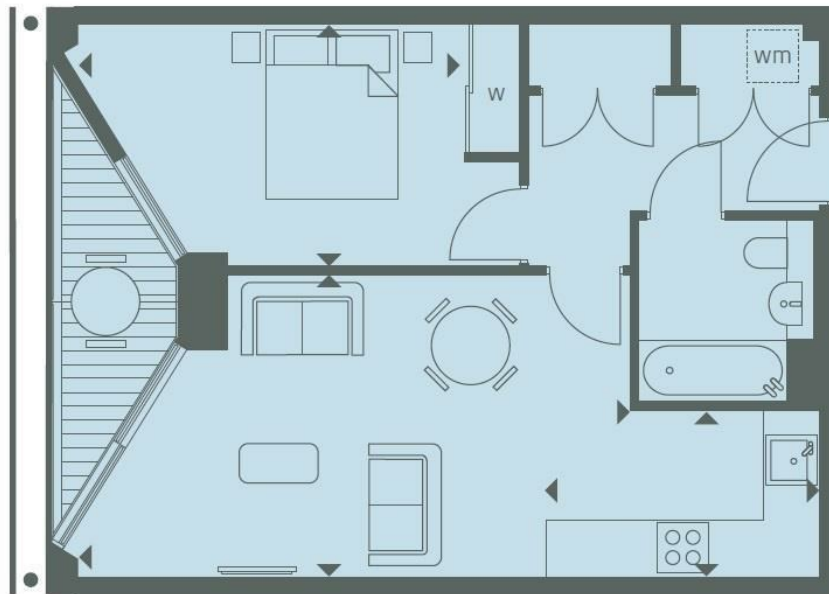
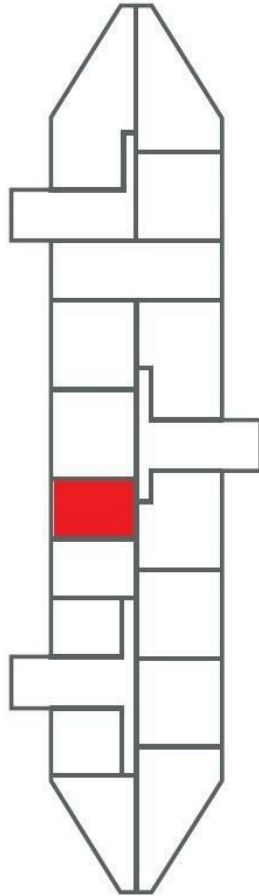
GARTON JONES.COM

9 Albert
Embankment
London
SE1 7SP

Lettings:
+44 (0) 20 7735 1888
nineelms@gartonjones.com
www.gartonjones.com



Thames River



LEVEL	9
INTERNAL AREA M ² / SQ FT	49.71 / 535
EXTERNAL AREA M ² / SQ FT	4.84 / 52.1
Living / Dining	6.33m x 3.46m / 20'8" x 11'4"
Kitchen	3.14m x 1.91m / 10'3" x 6'3"
Bedroom 1	4.42m x 2.76m / 14'5" x 9'1"
Balcony	5.46m x 1.50m / 17'9" x 4'9"

