



2 Riverlight Quay, London  
SW11

GARTON JONES.COM



## 2 Riverlight Quay, London , SW11

GARTON JONES.COM

9 Albert  
Embankment  
London  
SE1 7SP

Sales +44 (0) 20 7735 1888  
nineelms@gartonjones.com  
www.gartonjones.com

### £600 Per Week

A spacious 1 double bedroom apartment of approx. 533sq.ft (49.50sq.m.) in Riverlight. The property has an open plan reception room with a smart integrated kitchen, floor to ceiling windows, a luxury bathroom suite and a balcony.

Residents of Riverlight Quay benefit from exclusive facilities to include a fantastic Heated Swimming Pool, Jacuzzi, Sauna and Steam Room as well as a well-equipped mezzanine "river view" Gymnasium. There is also a reception lounge and library, 24-hour concierge and a private cinema screening room and virtual golf room. The on-site amenities include the Black Cab Coffee Co, Nine Elms Tavern and Waitrose supermarket and there are plenty of nearby new restaurants and bars adding to the increasing vibrancy of Nine Elms. Nine Elms Tube Station and Battersea Power Station Northern Line tube stops are now open and both a short walk away from Riverlight Quay.

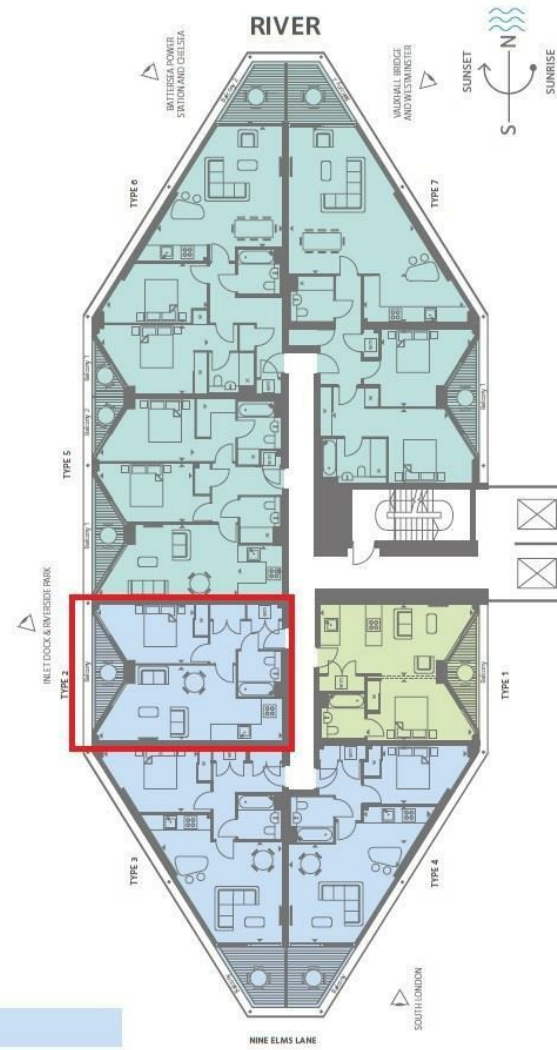
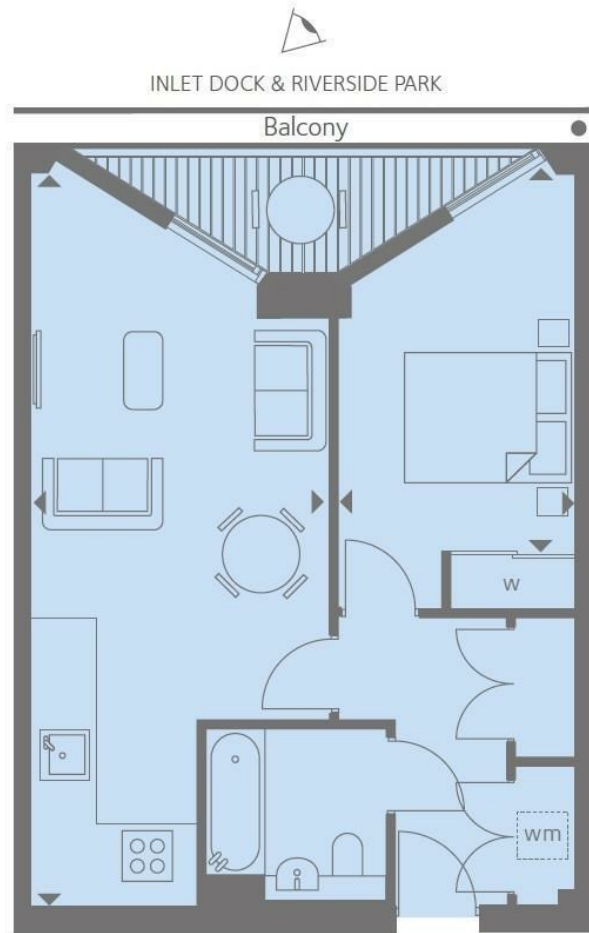
Please note furniture may differ to that shown in the current photos.

- Electricity Supply — Mains | Water Supply — Mains | Sewerage — Mains | Heating — Comfort Cooling
- Broadband: Check Coverage via Ofcom
- Mobile Signal: Check Coverage via Ofcom
- Parking: No Parking Included
- Lift Access
- Building Safety: EWS1 Available on Request
- Council Tax Band E (London Borough of Wandsworth)
- 5 Week Security Deposit
- Holding deposit equivalent to 1 week of rent
- Rent to be payable monthly in advance
- EPC Rating B (81)

- 1 Double Bedroom, Luxury Bathroom Suite
- 533sq.ft (49.50sq.m)
- 1 Bathroom
- Balcony
- Fantastic Storage
- 24 Hour Concierge
- Residents Gym
- Swimming Pool, Spa, Sauna & Jacuzzi
- Cinema Screening Room & Virtual Golf
- 0.2 Miles to Battersea Power Station Tube



EPC certificate available on request.



INTERNAL AREA M <sup>2</sup> /SQ FT	49.40 / 532
EXTERNAL AREA M <sup>2</sup> /SQ FT	4.84 / 52
Living / Kitchen	8.29m x 3.46m / 27'1" x 11'3"
Bedroom 1	4.38m x 2.77m / 14'3" x 9'0"
Balcony	5.46m x 1.50m / 17'9" x 4'9"



