



8 New Union Square, London  
SW11

GARTONJONES.COM



# 8 New Union Square, London , SW11

## £650 Per Week

A spacious 1-bedroom apartment of 617sq.ft (57.3sqm) available to rent in Capital Building in Embassy Gardens, a very popular residential development in the heart of Nine Elms. This fantastic apartment has an open plan reception room with a large balcony offering good views of the linear park. There is a well-proportioned open plan reception room & smart integrated kitchen, good storage throughout and a luxury bathroom suite. For the residents' private use there is a 24-hour concierge, cinema screening room, library & lounge, business centre, yoga studio, 2 private gymnasiums, and a very cool indoor/outdoor swimming pool.

Residents of Embassy Gardens also have access to the world-famous sky pool, connecting two of the towers at Legacy Building. Amenities such as District coffee shop, Darbys' restaurant, The Alchemist cocktail bar, as well as a Waitrose convenience store are located on-site but you are also close to a host of other local shops and restaurants on your doorstep. Nine Elms tube station, part of the Northern Line extension, has now opened and is less than a 5 minutes' walk from Embassy Gardens providing easy access into Central London and the transport links of Vauxhall Station are also within walking distance.

Please note furniture may differ to that shown in the current photos.

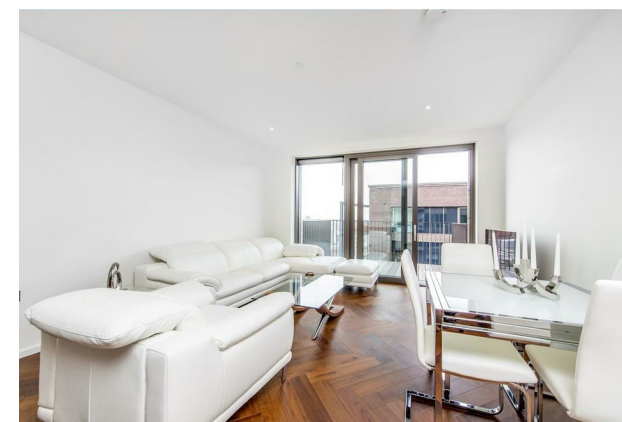
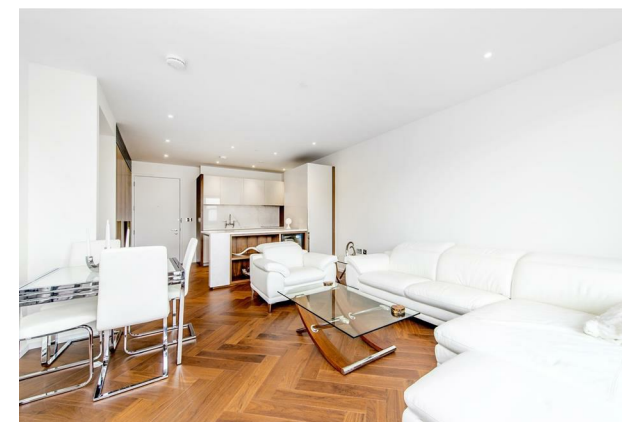
- Electricity Supply — Mains | Water Supply — Mains | Sewerage — Mains | Heating — Comfort Cooling
- Broadband & Mobile Signal: Check Coverage via Ofcom
- Parking: No Parking Included
- Lift Access
- Building Safety: EWS1 certificate is available on Request
- Council Tax Band E (London Borough of Wandsworth)
- 5 Week Security Deposit
- Holding deposit equivalent to 1 week of rent
- Rent to be payable monthly in advance
- EPC Rating B (84)

- 1 Bedroom
- 617sq.ft (57.3sqm)
- 12th Floor
- Open Plan Reception
- Balcony with Fantastic Views
- 2 Residents Gyms
- Sky Pool
- 24 Hour Concierge
- Cinema Screening Room & Business Suites
- 0.3 Miles to Battersea Power Station Tube

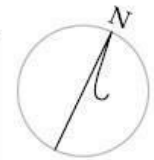
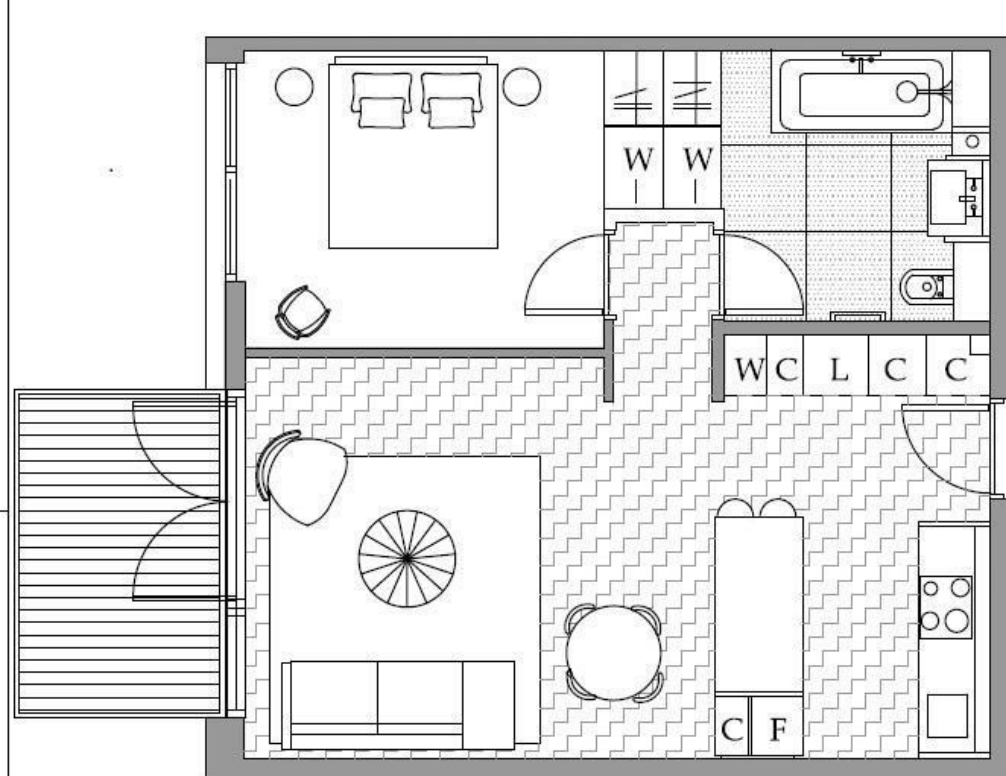
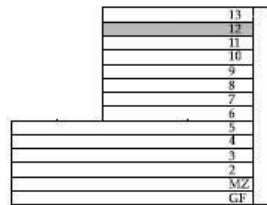
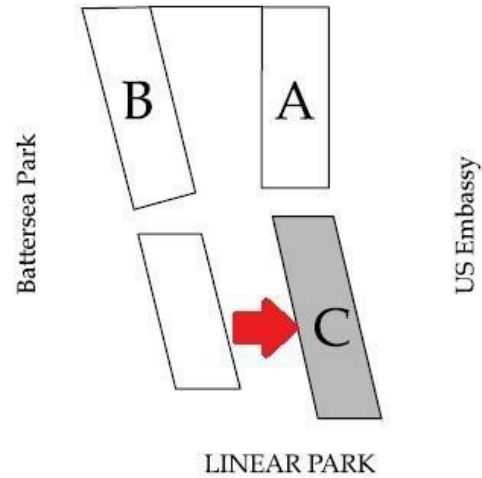
## GARTON JONES.COM

9 Albert  
Embankment  
London  
SE1 7SP

Lettings:  
+44 (0) 20 7735 1888  
nineelms@gartonjones.com  
www.gartonjones.com



# Central London River Thames



1 Bedroom  
 Total area:  
 57.3sqm/617 sqft  
 Living area  
 7825x4180mm  
 Bedroom :  
 4460x3070mm  
 Balcony:  
 7sqm



