



27 Albert Embankment, London
SE1

GARTON JONES.COM



27 Albert Embankment, London , SE1

GARTON JONES.COM

9 Albert
Embankment
London
SE1 7SP

Sales +44 (0) 20 7735 1888
nineelms@gartonjones.com
www.gartonjones.com

£650 Per Week

A stunning 1-bedroom apartment of approx. 475sq.ft (44sq.m) on the 6th floor of The Dumont, a landmark development by St James, located on the River Thames. The property benefits from an open plan reception room with fully fitted interior designed kitchen with Miele appliances, a luxury bathroom suite and great storage throughout. Residents also have exclusive access to a 19th floor Skyline Club Lounge within the Corniche, an extensive health and wellness suite offering spa treatments, a gymnasium with private training facilities and an indoor infinity pool plus a screening room, games room and ten-pin bowling. The Dumont is conveniently located on the River Thames and is a short walk away from both Vauxhall Station and the London Southbank offering plenty of restaurants, bars, and local amenities.

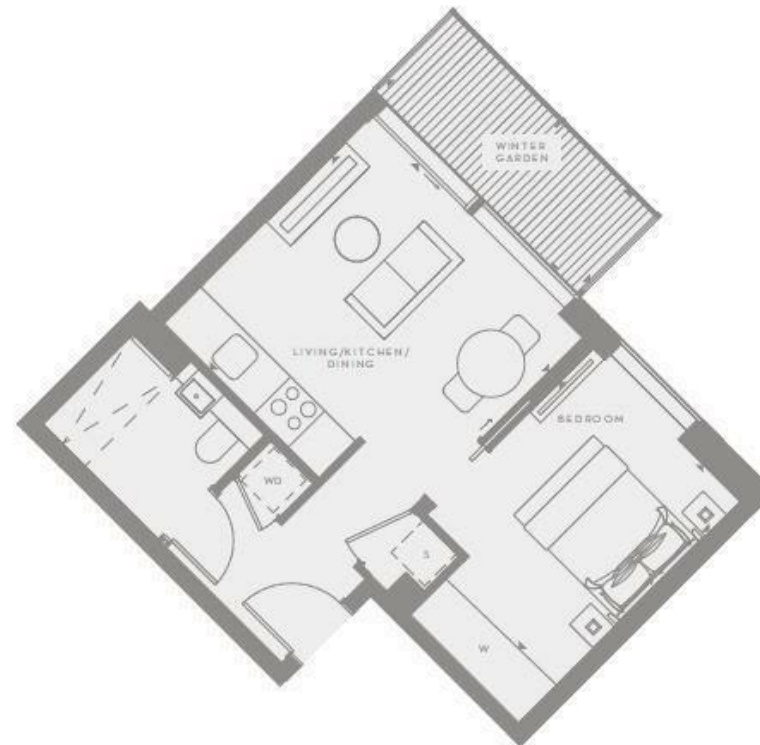
Please note furniture may differ to that shown in the current photos.

- Electricity Supply — Mains | Water Supply — Mains | Sewerage — Mains | Heating — Comfort Cooling
- Broadband & Mobile Signal : Check Coverage via Ofcom
- Parking: No parking included
- Lift Access
- Building Safety: EWS1 available on request
- Council Tax Band F (London Borough of Lambeth)
- 12 Month Minimum Term
- 5 Week Security Deposit
- Holding deposit equivalent to 1 week of rent
- Rent to be payable monthly in advance
- EPC Rating B (84)

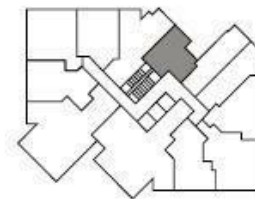
- 1 Bedroom
- 475sq.ft (44sq.m)
- Open Plan Reception
- Balcony
- 24 Hour Concierge
- Residents Gym
- Swimming Pool, Sauna, Steam Room & Jacuzzi
- 19th Floor Residents Lounge & Bar
- Cinema Screening Room & Bowling Alley
- 0.4 Miles to Vauxhall Station



EPC certificate available on request.



TYPE 6		
Apartment	5.06	6.06
Living/Kitchen/Dining	3.89 x 4.08m	129" x 134"
Bedroom	3.53 x 2.85m	117" x 94"
Total Internal Area	38.48 m²	414 ft²
Winter Garden	3.83 x 1.50m	127" x 4'11"
Total External Area	5.69 m²	61 ft²



KEY
 W Wardrobe
 S Service cupboard
 WD Washer/dryer

