



27 Albert Embankment, London  
SE1

GARTON JONES.COM



27 Albert Embankment, London  
, SE1

GARTON JONES.COM

9 Albert  
Embankment  
London  
SE1 7SP

Sales +44 (0) 20 7735 1888  
nineelms@gartonjones.com  
www.gartonjones.com

## £725,000 Leasehold

A spacious suite apartment of approx. 475sq.ft (44sq.m) within The Dumont, a landmark development by St James, located on the River Thames. This property further benefits from an open plan reception room with fully fitted interior designed kitchen with Miele appliances, luxury bathroom and great storage. This apartment has an additional storage space on the basement floor. Residents also have exclusive access to a 19th floor Skyline Club Lounge within the Corniche, an extensive health and wellness suite offering spa treatments, a gymnasium with private training facilities and an indoor infinity pool plus a screening room, games room and ten-pin bowling. To arrange a viewing please call 020 7735 1888

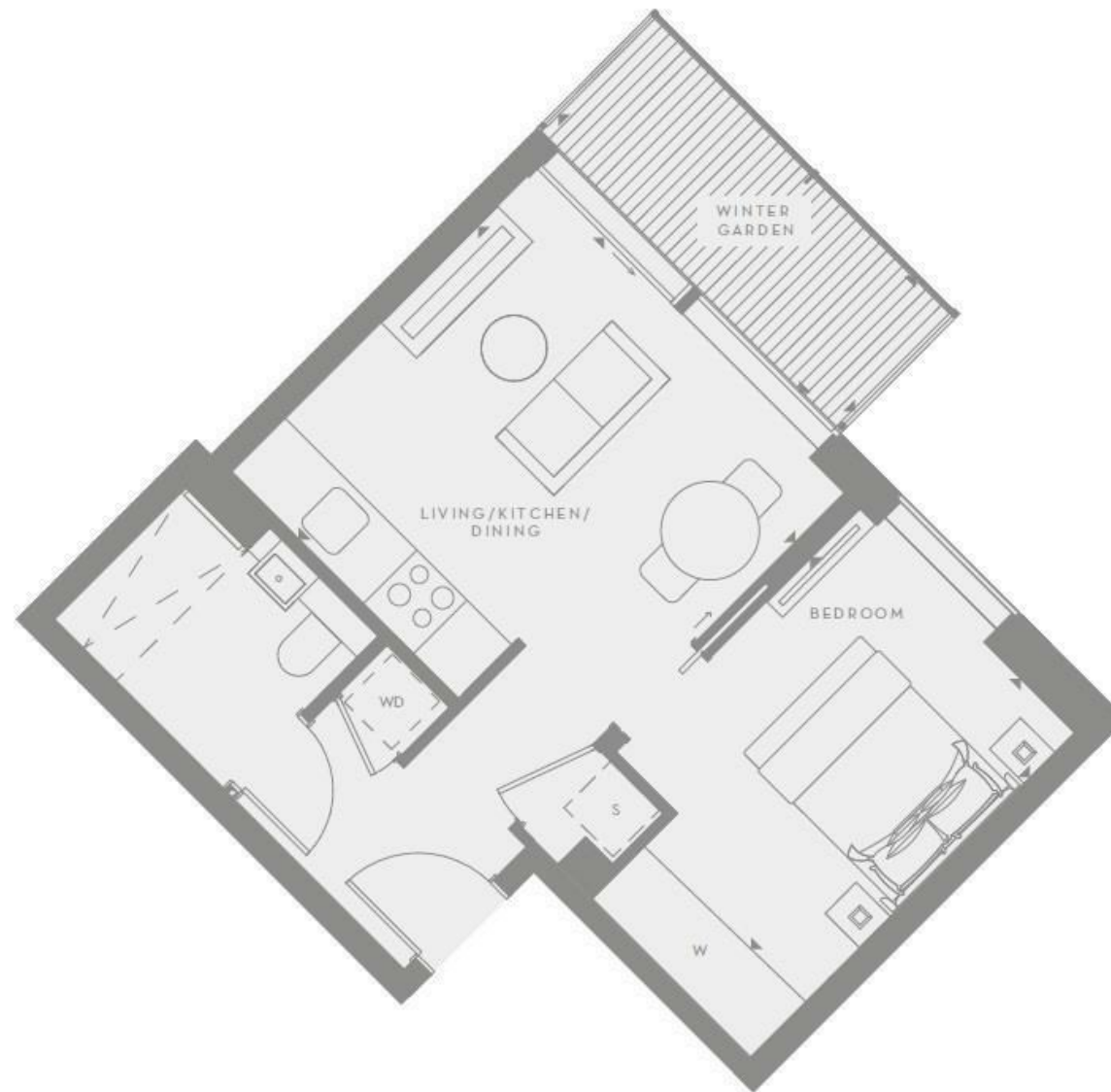
- 475sq.ft (44sq.m)
- Double Bedroom
- Luxury Bathroom
- Open Plan Reception Room
- Smart Integrated Kitchen
- 6th Floor
- Additional Storage Space
- Residents Skyline Club Lounge, Infinity Pool, Gym, Spa and Screening Room
- Close to The Excellent Transport Links of Vauxhall, Westminster and Waterloo
- 24 Hour Concierge



- Electricity Supply — Mains | Water Supply — Mains | Sewerage — Mains | Heating — Comfort Cooling
- Broadband: Check Coverage via Ofcom
- Mobile Signal: Check Coverage via Ofcom
- Parking: No Parking Included
- Lift Access
- Building Safety: EWS1 Available on Request
- Council Tax Band F (London Borough of Lambeth)
- Leasehold: 994 Years Remaining (999 years from 1 January 2018)
- Service Charges: Approx. £7.20psf
- Ground Rent £400 per annum Per Annum
- EPC Rating TBC



EPC certificate available on request.



Total Area: 475sqft / 44sqm

---



