



9 Albert Embankment, London
SE1

GARTON JONES.COM

9 Albert Embankment, London , SE1

GARTON JONES.COM

9 Albert
Embankment
London
SE1 7SP

Sales +44 (0) 20 7735 1888
nineelms@gartonjones.com
www.gartonjones.com

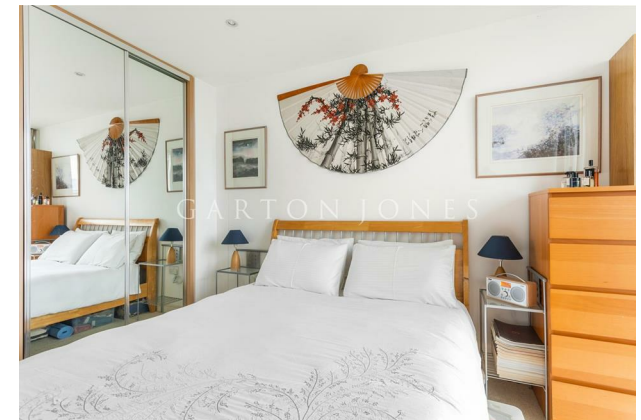
£525,000 Leasehold

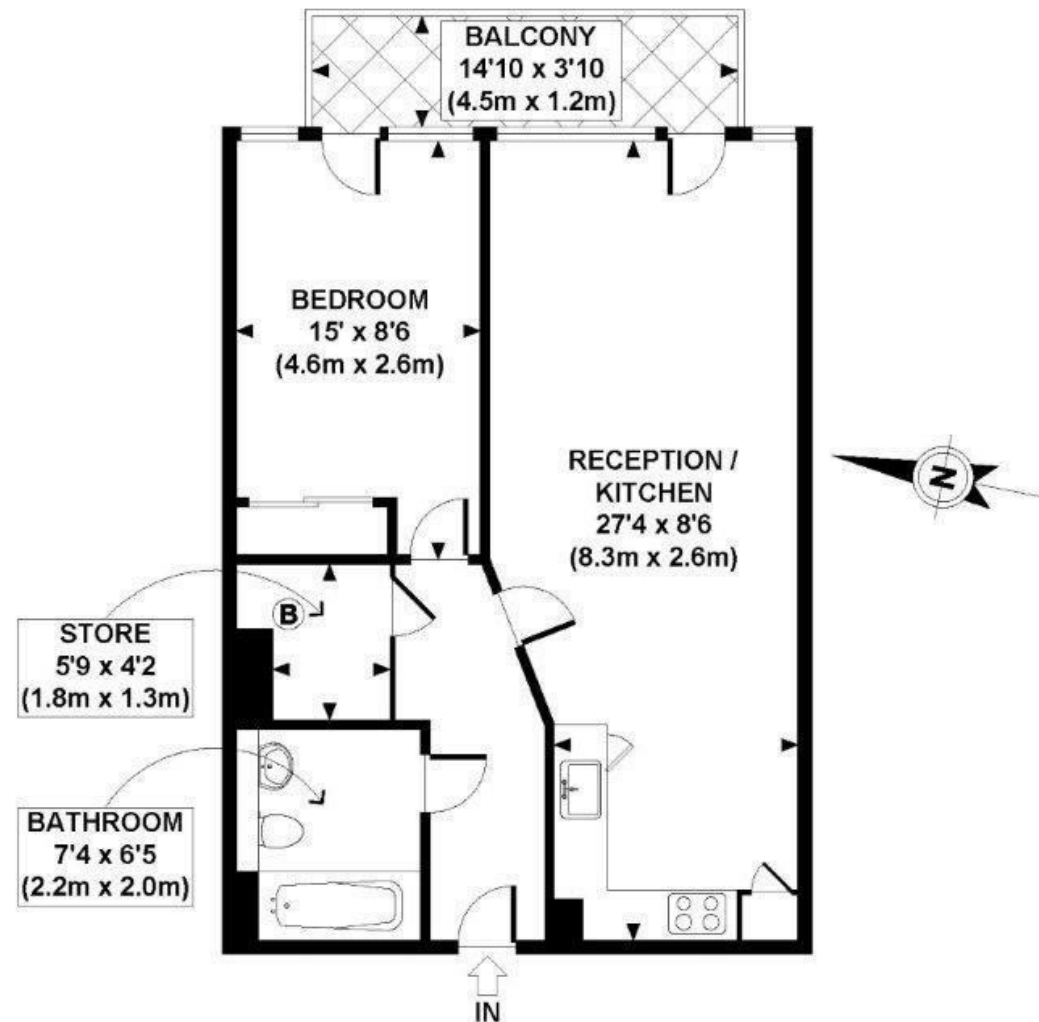
Discover the pinnacle of city living in this vibrant one-bedroom apartment of 545.00 sq.ft (50.6sq.m) on the 12th floor of 9 Albert Embankment, a sought-after riverside development conveniently located on the South bank of the River Thames between Vauxhall & Lambeth bridges.

Impeccably maintained, this residence offers a seamless blend of modern aesthetics and stunning panoramic views of the London skyline. With a spacious, open plan reception & kitchen, the property further benefits from a large bedroom with built-in wardrobes, a stylish bathroom suite, and a spacious balcony.

9 Albert Embankment is a coveted building in a prime location with residents enjoying the convenience of 24/7 concierge services, and ample bicycle storage. Dive into the vibrant local scene with trendy bars, restaurants, and shops at your fingertips. Effortless commuting is ensured with frequent bus services and close proximity to Westminster and Vauxhall tube and rail services.

- 1 Bedroom Apartment
- 545.00 sq.ft (50.6sq.m)
- Location: Prime riverside address, ideal for urban enthusiasts.
- Views: Stunning London skyline vistas from your living room, bedroom and exclusive balcony.
- Modern Living: Stylish open-plan design with a contemporary integrated kitchen.
- Convenience: Enjoy the luxury of 24/7 concierge services for hassle-free living.
- Parking: Secure Private Parking Space
- Bike Storage: Ample storage for bicycles, catering to an active lifestyle.
- Local Lifestyle: Immerse yourself in the local scene with trendy bars, eateries, and shops nearby.
- Transport Connectivity: Effortless commute with frequent bus services and close proximity to Westminster and Vauxhall tube and rail services.





GROSS INTERNAL
FLOOR AREA 545 SQ FT

APPROX. GROSS INTERNAL FLOOR AREA 545 SQ FT / 51 SQ M

