



3 Riverlight Quay, London  
SW11

GARTON JONES.COM



# 3 Riverlight Quay, London , SW11

## £1,400,000

A spacious bedroom apartment of approx. 789sq.ft on the 10th floor (with lift) of Riverlight. The property has two double bedrooms with an open plan reception room with a smart integrated kitchen, floor to ceiling windows, a luxury bathroom suite and full-width balcony. Riverlight is located on the banks of the River Thames close to Battersea Power Station and residents have the use of some great onsite facilities including a residents health spa with a well-equipped “river view” gymnasium a heated swimming pool, virtual golf, a cinema and digital games room, resident’s lounge, business suite and a 24-hour concierge service. The on-site amenities include the Black Cab Coffee Co, Nine Elms Tavern and Waitrose supermarket. Photos are of a similar property in the development.

- 789 sq.ft
- Two Bedroom
- Two Luxury Bathrooms
- Open Plan Reception Room with a Smart Integrated Kitchen
- Balcony
- East Facing Aspect
- 24 Hour Concierge
- Cinema, Digital Games Room & Lounge
- Residents Leisure Suite with Gymnasium and Swimming Pool
- Walking Distance to Vauxhall Rail/Tube Station & The Beautiful Green Open Spaces of Battersea Park

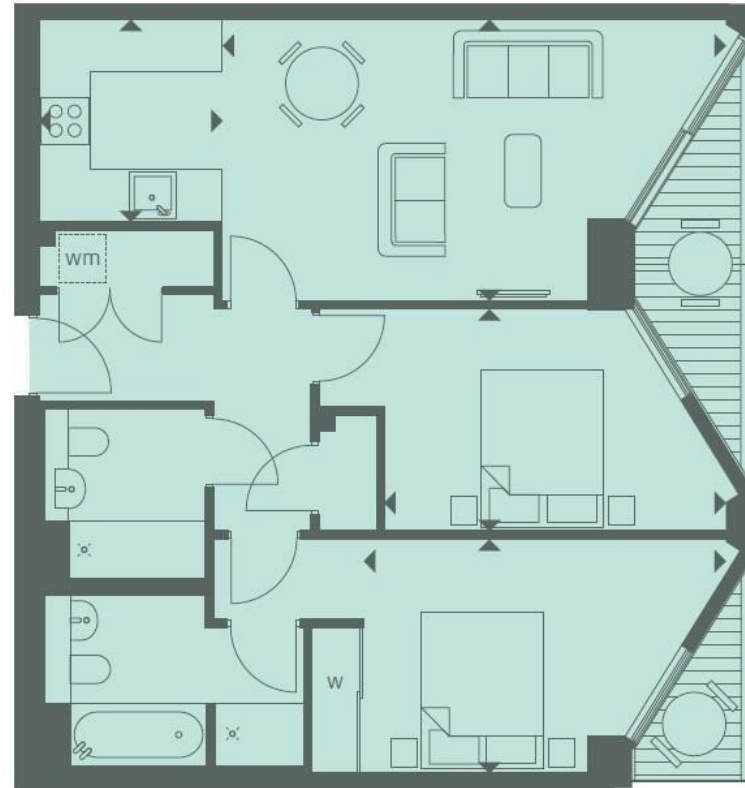
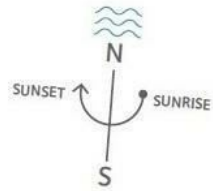
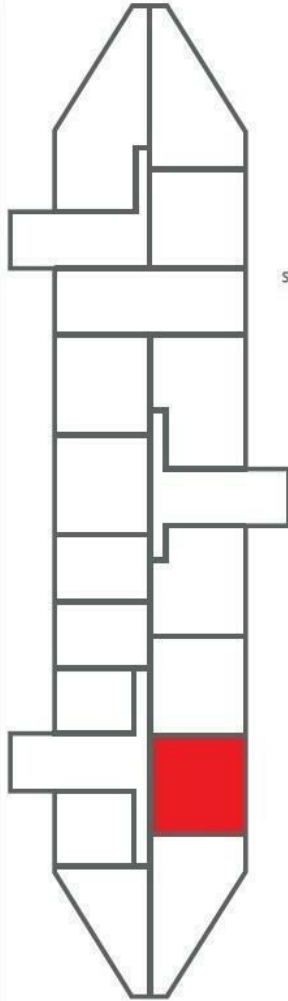
## GARTON JONES.COM

9 Albert  
Embankment  
London  
SE1 7SP

Lettings:  
+44 (0) 20 7735 1888  
nineelms@gartonjones.com  
www.gartonjones.com



# River Thames



|                                      |                               |
|--------------------------------------|-------------------------------|
| LEVEL                                | 8                             |
| INTERNAL AREA M <sup>2</sup> / SQ FT | 73.27 / 789                   |
| EXTERNAL AREA M <sup>2</sup> / SQ FT | 7.26 / 78.1                   |
| Living / Dining                      | 6.23m x 3.48m / 20'4" x 11'4" |
| Kitchen                              | 2.50m x 2.27m / 8'2" x 7'4"   |
| Bedroom 1                            | 4.48m x 2.90m / 14'7" x 9'5"  |
| Bedroom 2                            | 4.23m x 2.75m / 13'9" x 9'0"  |
| Balcony 1                            | 5.46m x 1.50m / 17'9" x 4'9"  |
| Balcony 2                            | 2.73m x 1.50m / 8'9" x 4'9"   |

