



The Corniche, 24 Albert Embankment
London SE1

GARTON JONES.COM



The Corniche, 24 Albert Embankment London, SE1

GARTON JONES.COM

9 Albert
Embankment
London
SE1 7SP

Sales +44 (0) 20 7735 1888
nineelms@gartonjones.com
www.gartonjones.com

£1,180,000 Leasehold

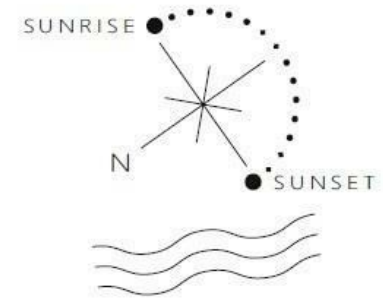
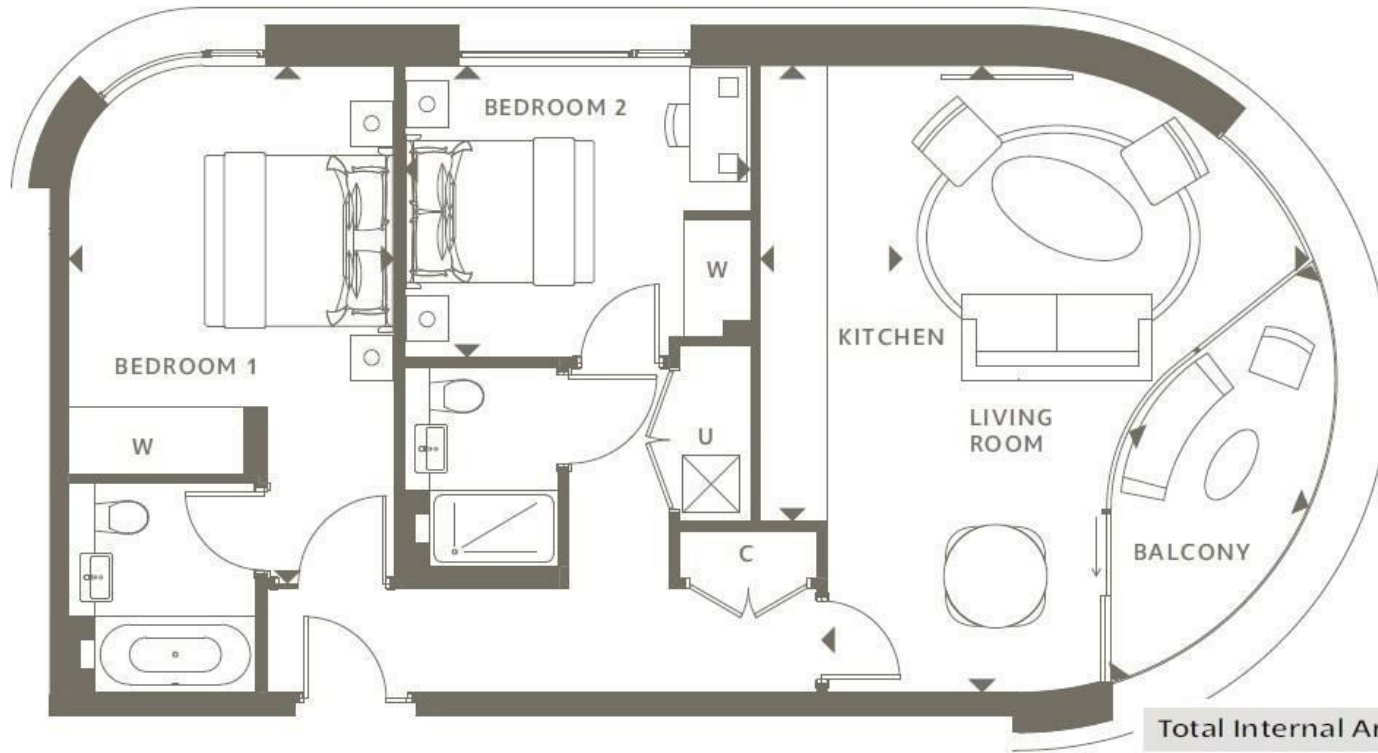
A spacious 2 double bedroom apartment of 820sq.ft (76.24sq.m) in The Corniche, a landmark development by St James, located on the South Bank of the River Thames at Albert Embankment. This property further benefits from an open plan reception room with fully fitted interior designed kitchen with Miele appliances, 2 luxury bathrooms (1 en-suite), a utility cupboard and further storage. Designed by the internationally acclaimed architectural practice, Foster and Partners, residents also have exclusive access to a Skyline Club Lounge on the 19th floor, an extensive health and wellness suite offering spa treatments, a gymnasium with private training facilities and an indoor infinity pool, screening room, tenpin bowling and billiard room. This building benefits from a valid EWS1.

991 Year Lease Remaining
Service Charge: Approx. £7.20psf
Ground Rent: 500pa

- Valid EWS1 Certificate
- 820sq.ft (76sq.m)
- 2 Double Bedrooms
- 2 Luxury Bathrooms (1 En-Suite)
- Open Plan Reception Room
- Smart Integrated Kitchen
- Balcony
- 24 Hour Concierge
- Residents Skyline Club Lounge, Infinity Pool, Spa and Screening Room:



EPC certificate available on request.



Total Internal Area	76.24 m ²	820.6 ft ²
Total External Area	6.24 m ²	67.1 ft ²

