



2 Riverlight Quay, London  
SW11

GARTON JONES.COM



## 2 Riverlight Quay, London , SW11

### £575 Per Week

A well-proportioned Manhattan Suite apartment offering 439sq.ft (40.8sq.m) available to rent in Riverlight Quay, a modern riverside development on the banks of the River Thames and in the heart of Nine Elms. The property has a spacious open plan reception room with a smart integrated kitchen, wood flooring, great storage, comfort cooling, a luxury bathroom suite and a private balcony. Residents of Riverlight Quay benefit from exclusive facilities to include a fantastic Heated Swimming Pool, Jacuzzi, Sauna and Steam Room as well as a well-equipped mezzanine "river view" Gymnasium. There is also a reception lounge and library, 24-hour concierge and a private cinema screening room and virtual golf room. The on-site amenities include the Black Cab Coffee Co, Nine Elms Tavern and Waitrose supermarket and there are plenty of nearby new restaurants and bars adding to the increasing vibrancy of Nine Elms. Nine Elms Tube Station and Battersea Power Station Northern Line tube stops are both a short walk away from Riverlight Quay providing quick access throughout Central London.

Please note furniture may differ to that shown in the current photos.

- Electricity Supply — Mains | Water Supply — Mains | Sewerage — Mains | Heating — Comfort Cooling
- Broadband & Mobile Signal: Check Coverage via Ofcom
- Parking: No Parking Included
- Lift Access
- Building Safety: EWS1 Available on Request
- Council Tax Band D (London Borough of Wandsworth)
- 12 Month Minimum Term
- 5 Week Security Deposit
- Holding Deposit equivalent to 1 week of rent
- Rent to be payable monthly in advance
- EPC Rating C (80)

- Manhattan Studio Apartment
- 439sq.ft (40.8sq.m)
- Bathroom
- Spacious Kitchen
- Balcony
- 24 Hour Concierge
- Residents Gym
- Swimming Pool, Spa, & Jacuzzi
- Cinema Screening Room & Virtual Golf
- 0.3 Miles from Battersea Power Station Tube

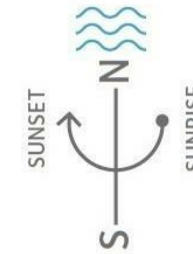
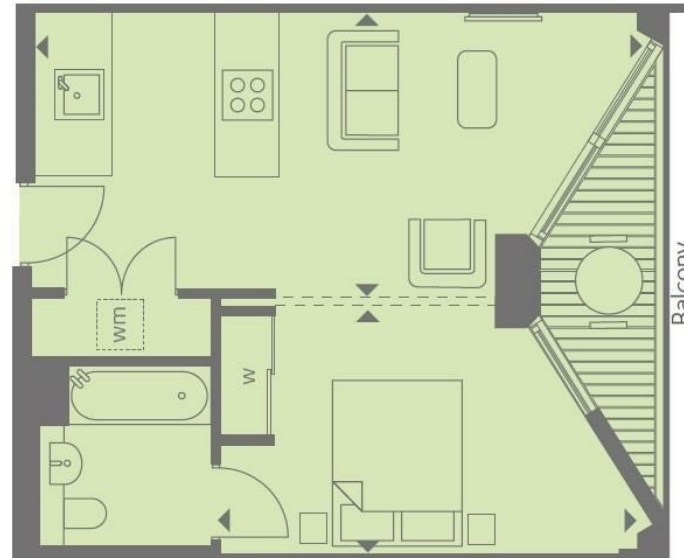
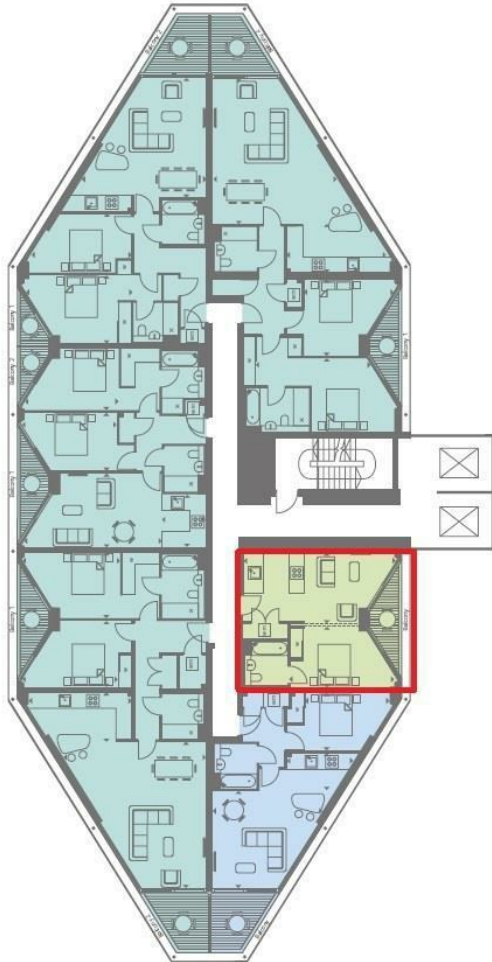
GARTON JONES.COM

9 Albert  
Embankment  
London  
SE1 7SP

Lettings:  
+44 (0) 20 7735 1888  
nineelms@gartonjones.com  
www.gartonjones.com



Thames River



<b>INTERNAL AREA M<sup>2</sup> / SQ FT</b>	<b>40.80 / 439</b>
<b>EXTERNAL AREA M<sup>2</sup> / SQ FT</b>	<b>4.84 / 52</b>
Living / Kitchen	6.89m x 3.24m / 22'6" x 10'6"
Bedroom	4.89m x 2.81m / 16'0" x 9'2"
Balcony	5.46m x 1.50m / 17'9" x 4'9"

