



67 Bondway, London
SW8

GARTONJONES.COM



67 Bondway, London
, SW8

£1,495,950

Two Bedroom apartment located on the 28th floor with lavish interiors by Versace Home, in the first collaboration between this luxury designer and a new residential development. The fully fitted integrated kitchen is complete with Miele appliances. The open plan reception benefits from a private South West facing winter garden with views of the London skyline. The apartment measures 775 sq ft. This ultra-modern, 50 storey tower with first-class facilities located on 23rd & 24th floors and include: 8,010 sqft communal gardens, an indoor swimming pool and Jacuzzi, state-of-the-art gym and a children's play area. There is also a 24hr concierge service and an option for valet parking with some apartments. The redevelopment of the surrounding areas of Nine Elms means that a fantastic array of public facilities will be available, new walkways and courtyards will bring together the vibrant shops, bars and restaurants on offer. The Northern Line extension and existing rail links means that central London can be reached in minutes.

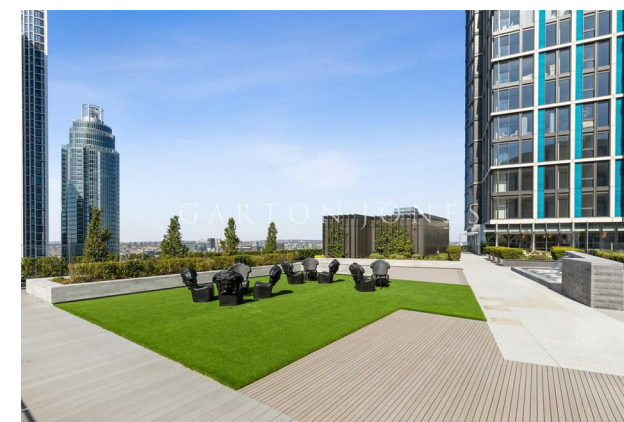
- Electricity Supply — Mains | Water Supply — Mains | Sewerage — Mains | Heating — Comfort Cooling
- Broadband: Check Coverage via Ofcom
- Mobile Signal: Check Coverage via Ofcom
- Parking: No Parking Included
- Lift Access
- Building Safety: EWS1 Available on Request
- Council Tax Band TBC
- Leasehold: TBC
- Service Charges: TBC
- Ground Rent: TBC
- EPC Rating B (84)

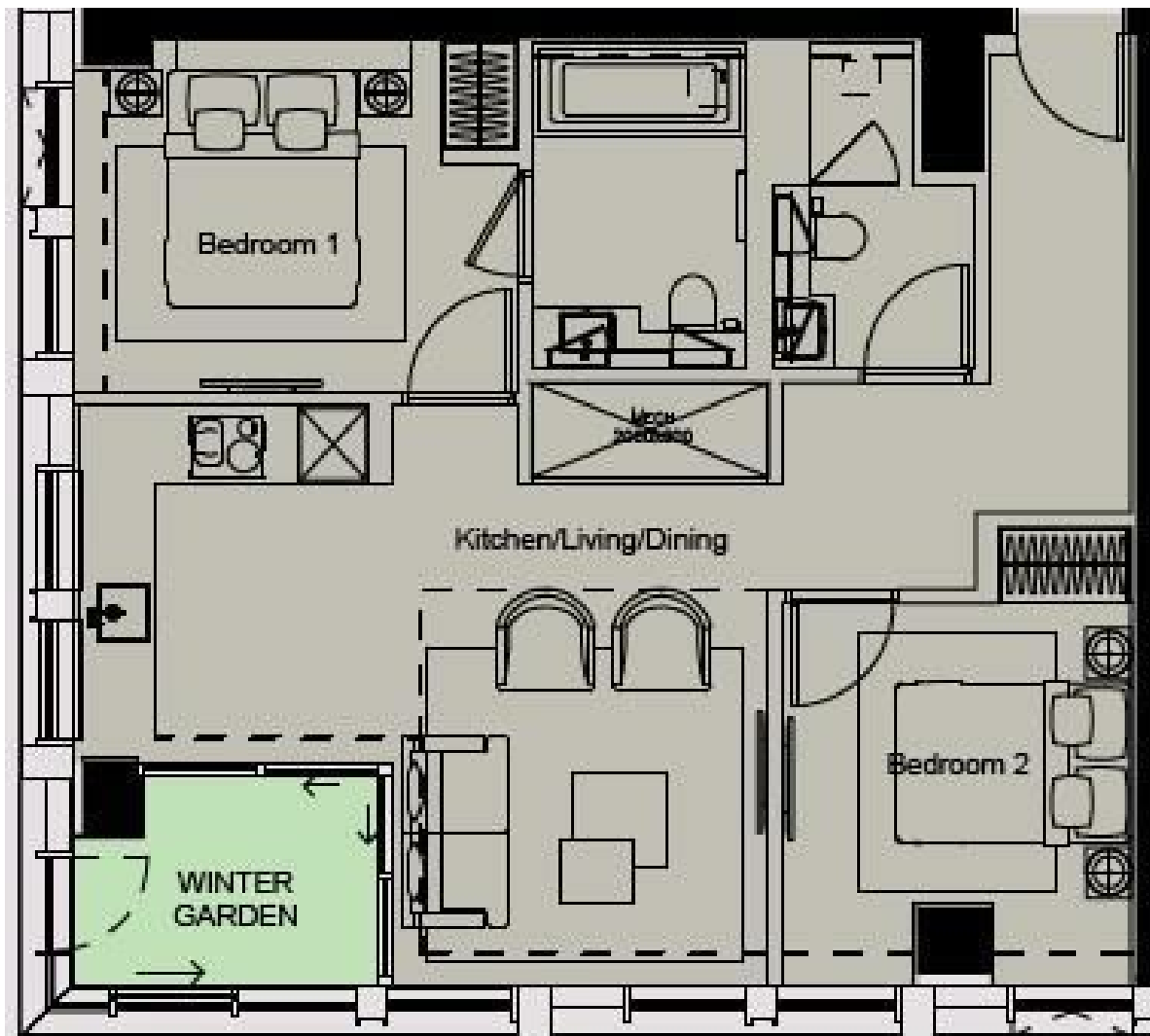
- 775 sq.ft
- Off-Plan, New Build Development by Damac
- 2 Bedroom and 2 Bathroom
- Parking Space
- Estimated Completions Expected from Q2 2021
- 28th Floor
- 25% Deposit Has Been Paid
- Storage
- Residents Facilities Include Gymnasium, Cinema, Roof Garden, Swimming Pool
- 24 Hour Concierge Service

GARTON JONES.COM

9 Albert
Embankment
London
SE1 7SP

Lettings:
+44 (0) 20 7735 1888
nineelms@gartonjones.com
www.gartonjones.com





Total Area	775.3 ft²
-------------------	-----------------------------

