

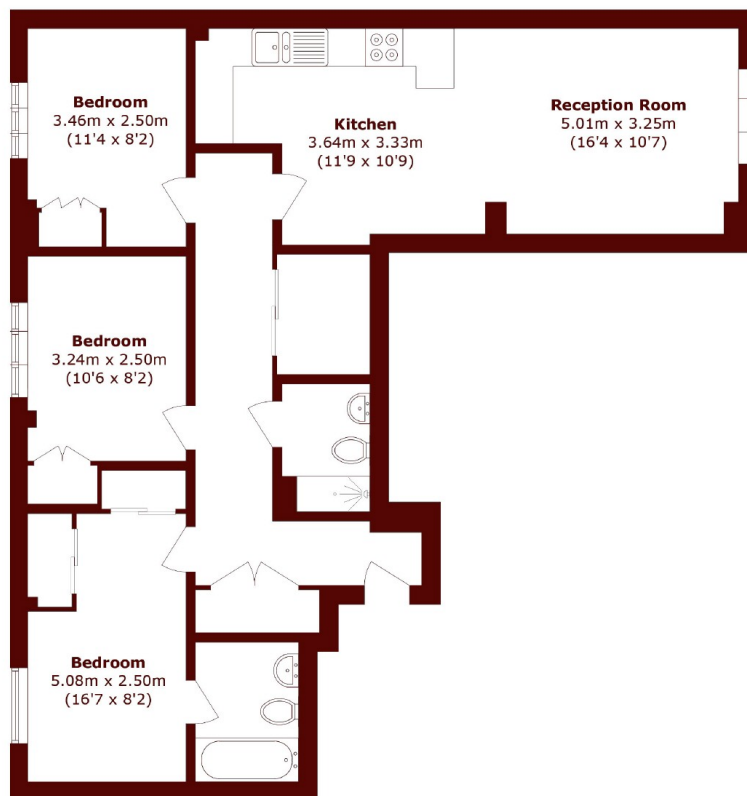


Bromyard Avenue, W3

£475,000

3 2 1 B

- Gated Development
- Concierge Service
- Well-Kept
- Great Location
- Communal Gardens
- Bright And Spacious



Total area (approx.): 80.9 sq. m (870.8 sq. ft)

Marsh & Parsons Chiswick

34-38 Turnham Green
Terrace, London, W4 1QP
020 8994 2556