

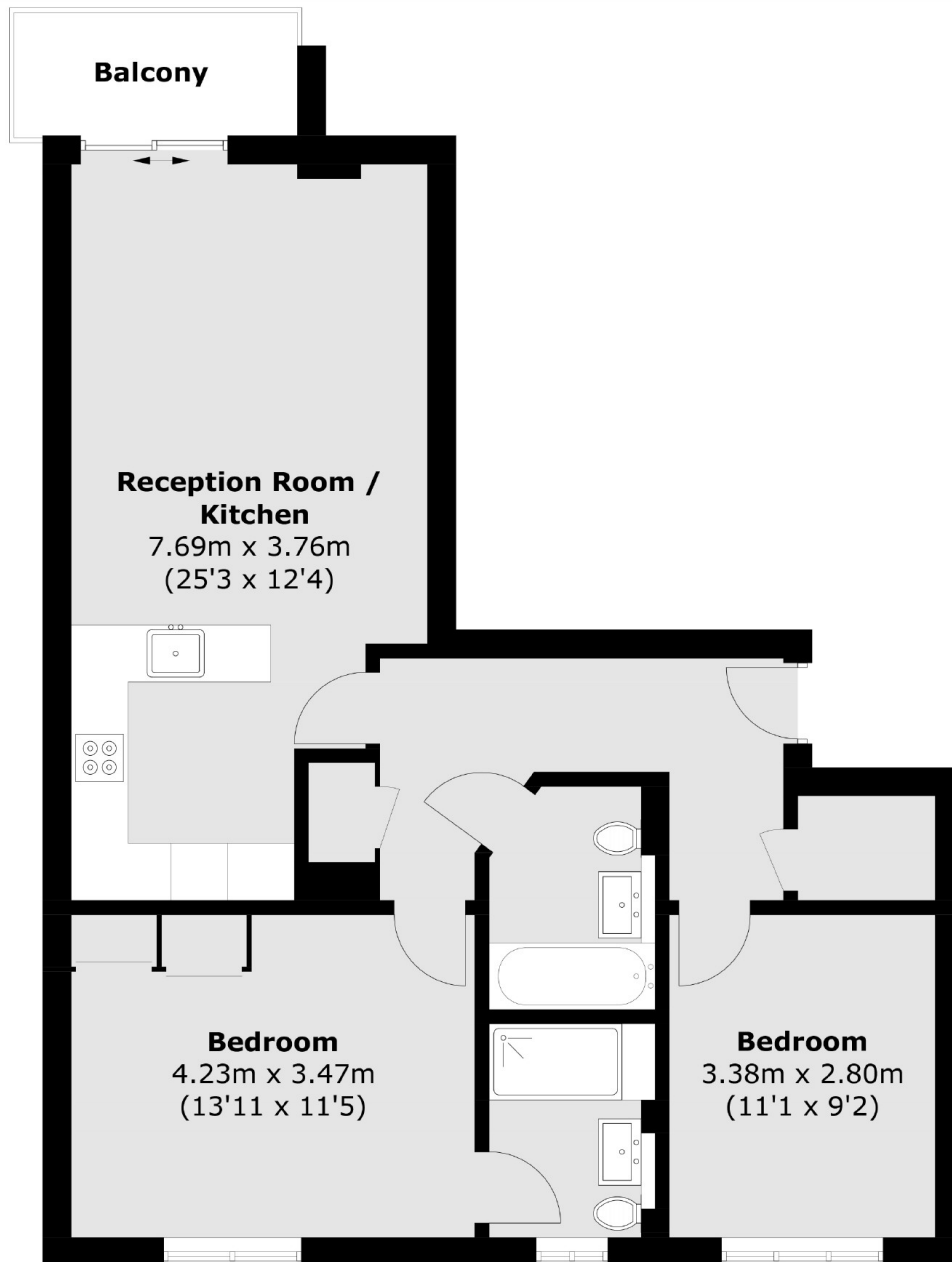


## Bromyard Avenue, W3

£400,000

2 2 1 B

- Gated Development
- Concierge Service
- Private Parking
- Private Balcony
- Modern Edge
- Great Transport Links



Total area (approx.): 73.0 sq. m (785.7 sq. ft)  
Balcony: 3.9 sq. m (41.9 sq. ft)

## Marsh & Parsons Chiswick

34-38 Turnham Green  
Terrace, London, W4 1QP  
020 8994 2556