

---

**Oakley Gardens, N8**  
Guide price £400,000

---

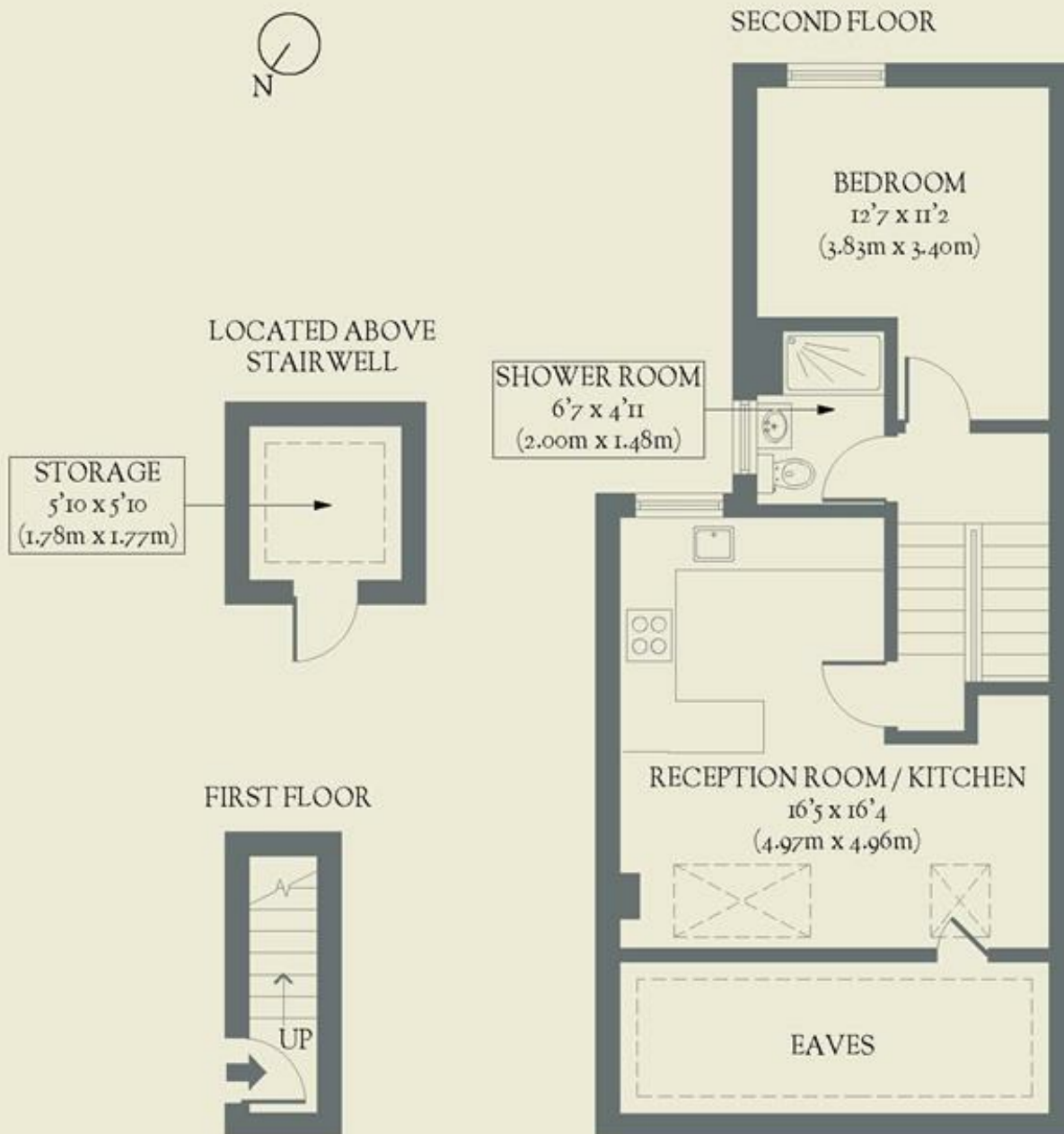


**A smart, split-level one-bedroom flat on the top floor of a handsome Edwardian house, a stone's throw from bustling Crouch End Broadway, and the beautifully imposing Alexandra Palace.**

- Type: Edwardian top-floor flat
- Beds: One double
- Baths: One shower room
- Living: Open-plan living
- Tenure: Share of Freehold
- Love: We love the pops of colour, from the pink kitchen tap to the dark blue bedroom walls.
- Closest station: Hornsey Rail (0.3 miles), 15 minutes walk to Turnpike Lane tube station
- Parks: Close to Priory Park, Alexandra Palace, Finsbury Park & the Parkland Walk, Transport: Hornsey Rail (0.3 miles)
- Size: 44 sq m / 474 sq ft (59.45 sq m/ 640 ft (including eaves and storage)
- Chain: The current owner needs to find & is actively looking in the area

# BRICKWORKS

Approximate Floor Area:  
59.45 sq m / 640 sq ft (Including Eaves & Storage)  
43.99 sq m / 474 sq ft (Excluding Eaves & Storage)



Oakley Gardens  
*Crouch End*