

BRICKWORKS

PROPERTY BROCHURE

⋮

Hampden Road  
*Muswell Hill*, 3 Bed. House  
£795,000

BRICKWORKS  
Hampden Road  
*Muswell Hill, 3 Bed. House*  
£795,000



Tucked away in Muswell Hill, this captivating three-bedroom Edwardian house is stripped back to the basics, celebrating its natural beauty to create a stylish and comfortable home.

# BRICKWORKS

## Hampden Road

### Muswell Hill, 3 Bed. House

£795,000



- Type: House (freehold)
- Beds: Three double bedrooms
- Baths: One family bathroom plus external WC
- Living: Kitchen-diner and double reception room
- Garden: South-facing garden with studio
- Love: The bohemian, pared-back look gives this home a feel like no other
- Green space: Alexandra Park is just around the corner, but Highgate & Queens Woods and Hampstead Heath are also within reach
- Transport: Bounds Green Tube (1.2 miles) Alexandra Palace national rail (1.7 miles)
- Size: 110.21 sq m / 1186 sq ft (excluding the studio)
- Status: Owners need to find a property

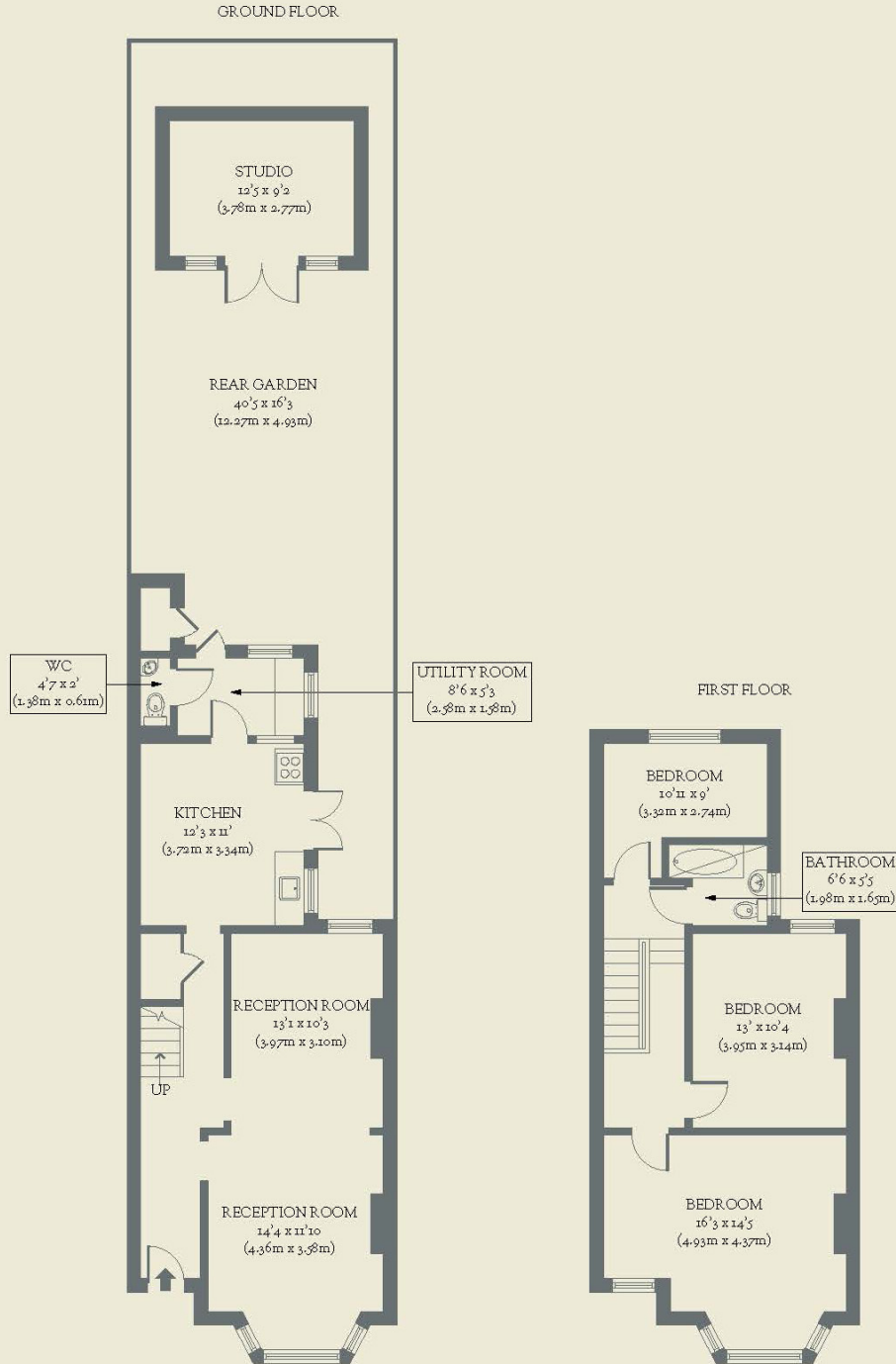
# BRICKWORKS

Hampden Road  
Muswell Hill, 3 Bed. House  
£795,000



# BRICKWORKS Floorplans

Approximate Floor Area:  
120.68 sq m / 1299 sq ft (Including Studio)  
110.21 sq m / 1186 sq ft (Excluding Studio)



Hampden Road  
Muswell Hill, 3 Bed. House  
£795,000